

# Research Data and Open Scholarship

## Research Data and Open Scholarship

RDOS supports the Cornell community in managing and sharing research outputs.

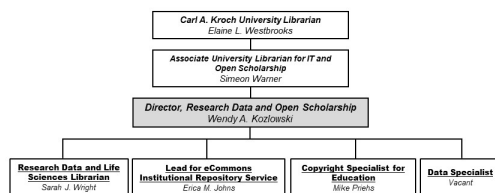
We facilitate ethical sharing of research and scholarship, and operate within the balance of content being “as open as possible, as closed as necessary”.

## Who We Are



CORNELL UNIVERSITY  
Library

### Research Data And Open Scholarship (RDOS)



Updated November 2021

Downloadable PDF Org Chart: [RDOS\\_20231117\\_OrgChart\\_Kozlowski.jpg](#)

Accessi

## Our Core Services

### Research Data Services

- [Data curation](#) and sharing support
- Consultation and instruction
- Outward facing educational website resources, including
  - Best practice (“how-to”) guidance for working with data throughout the life cycle
  - Cornell [Data Storage Finder](#)
  - [Cornell services](#) list: comprehensive list of data-related services from campus providers
  - Information about and a review service for data management and sharing plans (DMSP)
  - Resources regarding DMSP requirements for top Cornell funders
- Management and support for [Open Science Framework](#)(OSF) & [LabArchives](#) electronic lab notebook (in collaboration with CTI for LabArchives)
- [DMPTool](#) management
- [Cornell Data Services](#) (CDS) leadership and engagement (coordination, website maintenance, outreach leadership etc.)

### Persistent Identifier (PID) creation, management and support

- [ORCID](#) researcher identifiers
- Digital Object Identifiers (DOIs, via DataCite)

### eCommons Open Access Repository Services

eCommons provides long-term access to Cornell-related digital content, including documents, research papers, images, data, code and software, electronic theses and dissertations (ETDs) and more.

### Open scholarship, scholarly communication and copyright consultation and education, and service to the larger professional community.

- DSpace Leadership
- DataCite

### Local, national and international collaborative initiatives and services

Building relationships with University administration, researchers and peers is critical to understanding needs, solutions and what role CUL can play in closing those gaps. Examples of how we do this include:

- Participation in the Cornell Research Security Compliance Committee and its subgroups, including the Open Research Working Group
- Leadership roles in the [Data Curation Network](#)

- Cornell representation on [Higher Education Leadership Initiative for Open Scholarship](#) (HELIOS) and HELIOS working groups
- Participation in the recent Cornell University Research Data Security Task Force
- Cornell Statistical Consulting Unit Faculty Advisory Board membership
- Cornell University New Faculty Infrastructure Support Group membership

## How to reach us:

### Direct emails

- Wendy Kozlowski (wak57)
- Sarah J. Wright (sjw256)
- Erica M. Johns (emj73)
- Mike Priehs (mep324)

### Service emails

- Data Services (data-help@cornell.edu)
- eCommons (ecommons-admin@cornell.edu)

## Recent space activity

Wendy A. Kozlowski  
[Research Data and Open Scholarship](#) updated Nov 17, 2023 [view change](#)



CSM Automation  
[Research Data and Open Scholarship](#) updated Aug 29, 2023 [view change](#)

## Space contributors

- [Wendy A. Kozlowski](#) (182 days ago)
- [CSM Automation](#) (262 days ago)