

Sudden Expansion - Numerical Results

Authors: Yong Wang & Said Elghobashi, UC Irvine

[Problem Specification](#)

[1. Pre-Analysis & Start-Up](#)

[2. Geometry](#)

[3. Mesh](#)

[4. Physics Setup](#)

[5. Numerical Solution](#)

[6. Numerical Results](#)

[7. Verification & Validation](#)

[Exercises](#)

[Comments](#)

Numerical Results

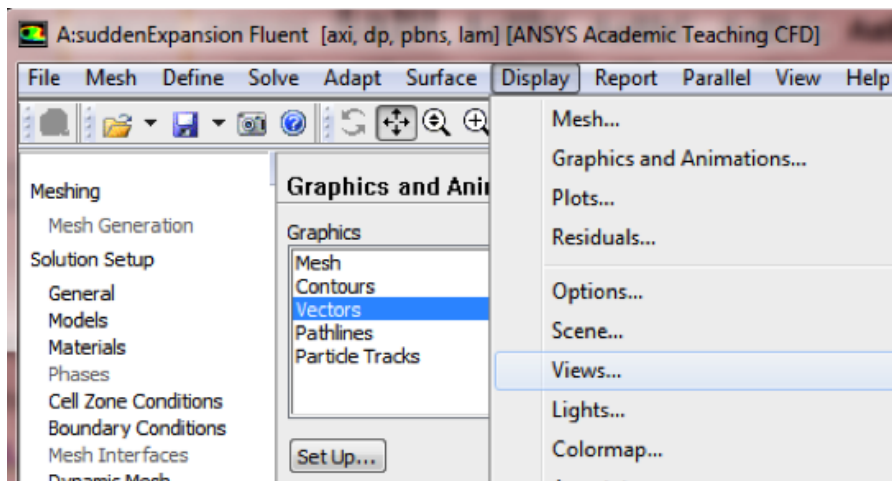
The results steps shown below are for the CFD-Post postprocessor that is included in ANSYS Workbench.

Velocity Vectors

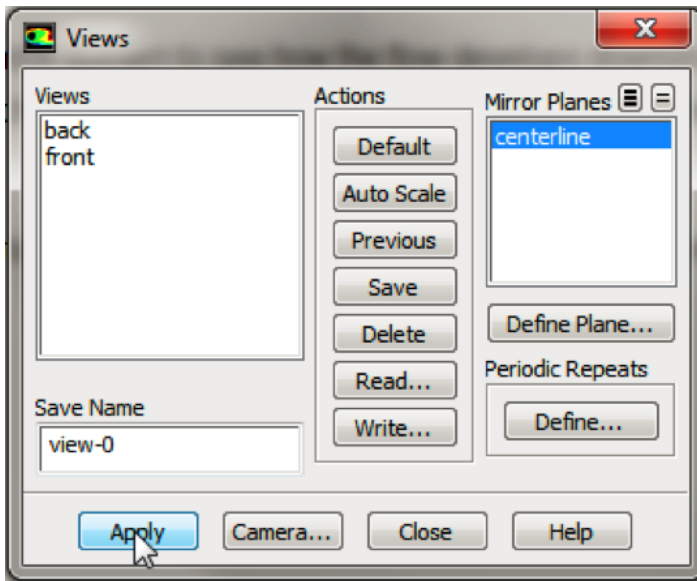
One can plot vectors in the entire domain, or on selected surfaces. Let us plot the velocity vectors for the entire domain to see how the flow develops downstream from the inlet and redevelops from the expansion entrance. First, click on **Graphics & Animations**. Next, double click on **Vectors** which is located under **Graphics**. Then, click on **Display**. Zoom into the region near the inlet. The length and color of the arrows represent the velocity magnitude. The vector display is more intelligible if one makes the arrows shorter as follows:

Change **Scale** to 0.4 in the **Vectors** menu and click **Display**.

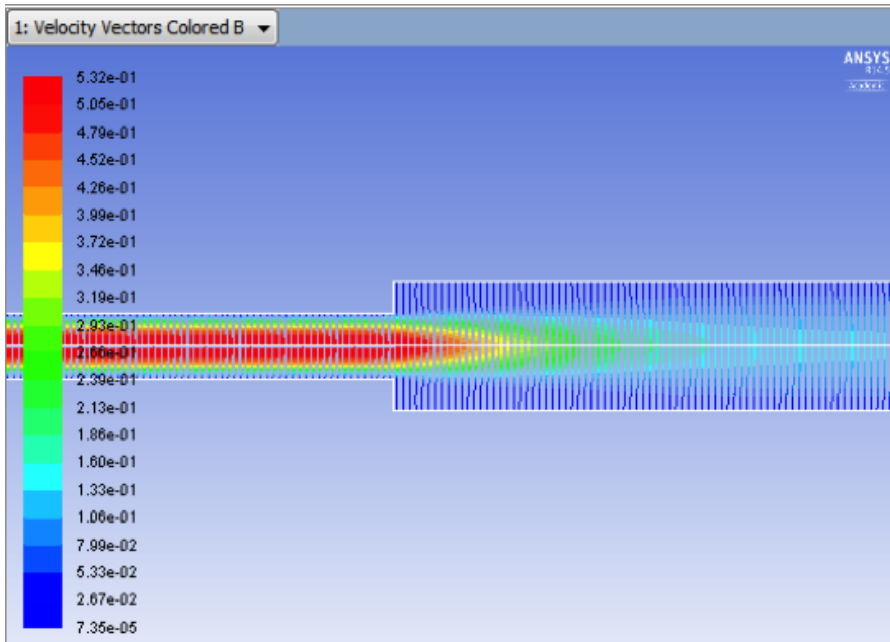
The laminar pipe flow was modeled asymmetrically; however, the plot can be reflected about the axial axis to get an expanded sectional view. In order to carry this out (**Click**) **Display > Views...** as shown below.



Under **Mirror Planes**, only the **axis (or centerline)** surface is listed since that is the only symmetry boundary in the present case. Select **axis (or centerline)** and click **Apply**, as shown below.



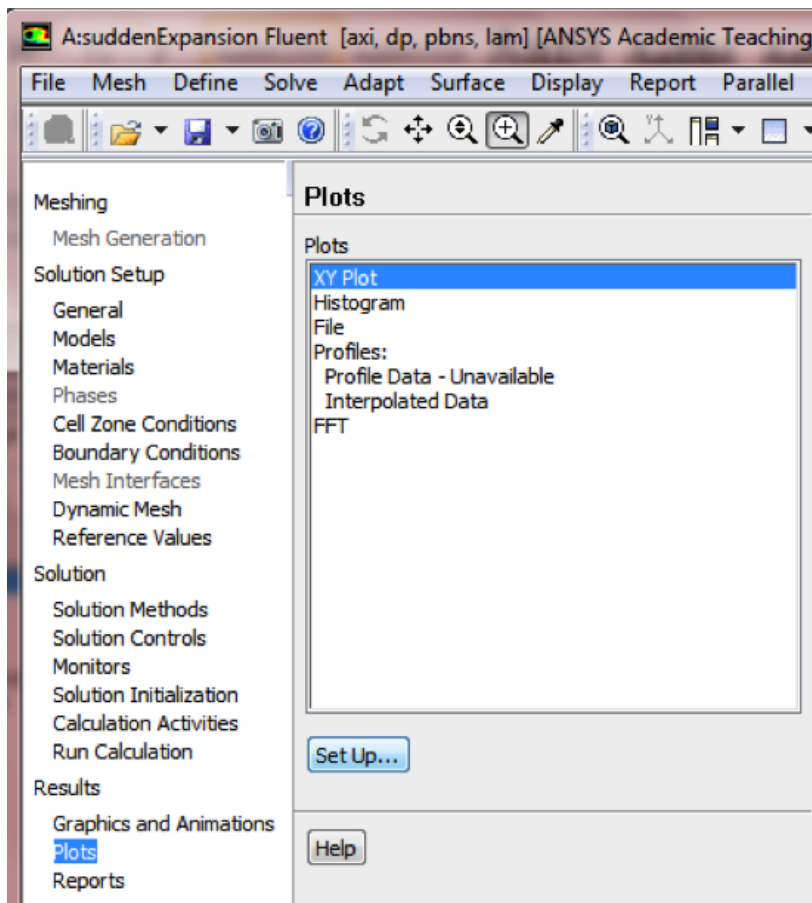
Then click **Close** to exit the **Views** menu. Your vector field should have been reflected across the axially axis as, shown below.



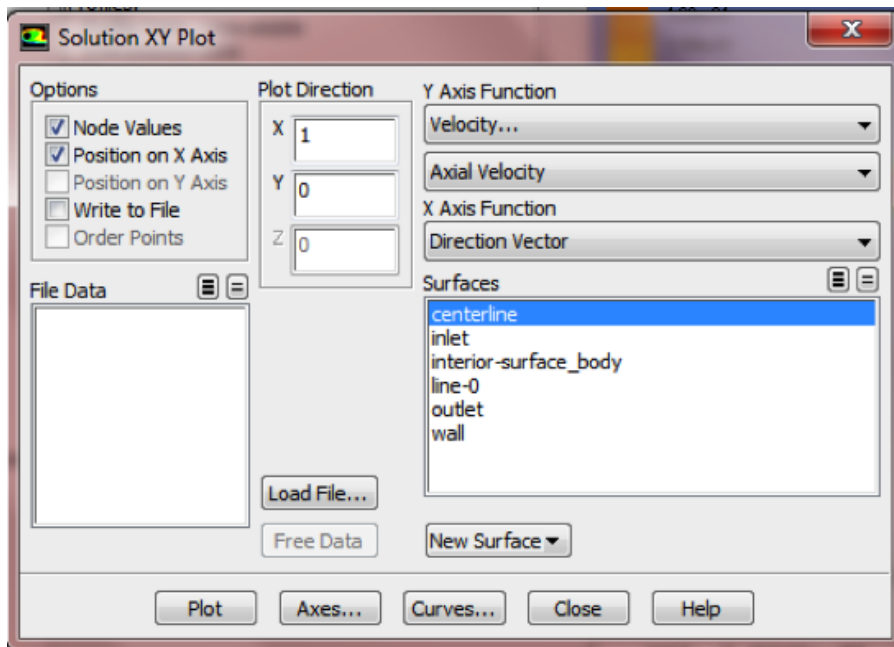
The velocity vectors provide a picture of how the flow develops downstream from the inlet and redevelops from the expansion entrance.

Centerline Velocity

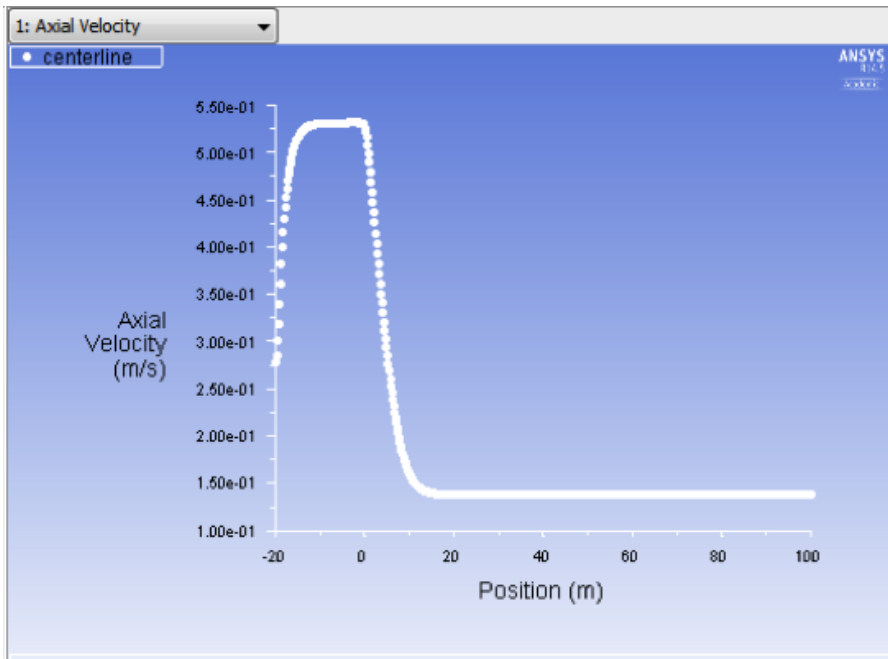
Here, we'll plot the variation of the axial velocity along the centerline. In order to start the process **(Click) Results > Plots > XY Plot... > Set Up..** as shown below



In the **Solution XY Plot** menu make sure that **Position on X Axis** is selected, and **X** is set to 1 and **Y** is set to 0. This tells FLUENT to plot the x-coordinate value on the abscissa of the graph. Next, select **Velocity...** for the first box underneath **Y Axis Function** and select **Axial Velocity** for the second box. Please note that **X Axis Function** and **Y Axis Function** describe the x and y axes of the *graph*, which should not be confused with the x and y directions of the pipe. Finally, select **centerline** under **Surfaces** since we are plotting the axial velocity along the centerline. This finishes setting up the plotting parameters. Your **Solution XY Plot** should look exactly the same as the following image.



Now, click **Plot**. The plot of the axial velocity as a function of distance along the centerline now appears.

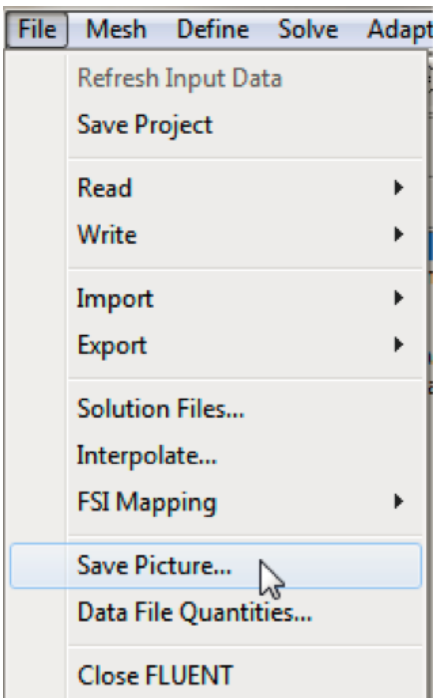


In the graph that comes up, we can see that the velocity reaches a constant value (about 5.25×10^{-1} m/s) beyond a certain distance from the inlet. This is the fully-developed flow region in the small pipe. When the flow passes the expansion entrance at $x=0$ m, the velocity will decrease due to the sudden expansion of the pipe. After another development, the velocity will reach a constant value (about 1.5×10^{-1} m/s) again.

Saving the Plot

In this section, we will save the data from the plot and a picture of the plot. The data from the plot will be saved first. In order to save the plot data open the **Solution XY Plot** menu and then select **Write to File**, which is located under **Options**. The **Plot** button should have changed to **Write....** Click on **Write....**, and then enter **vel.xy** as the XY File Name. Next, click **OK**. Check that this file has been created in your FLUENT working directory. Lastly, close the **Solution XY Plot** menu.

At this point, we'll save a picture of the plot. First click on **File** then click **Save Picture**, as shown below.



Under **Format**, choose one of the following three options: **EPS**, **TIFF**, or **JPG**. After selecting your desired image format and associated options, click on **Save...** Enter vel.eps, vel.tif, or vel.jpg depending on your format choice and click **OK**. Verify that the image file has been created in your working directory. You can now copy this file onto a disk or print it out for your records.

[Go to Step 7: Verification & Validation](#)

[Go to all FLUENT Learning Modules](#)