

Plate With a Hole - Exercises

Author: Benjamin Mullen, Cornell University

Problem Specification

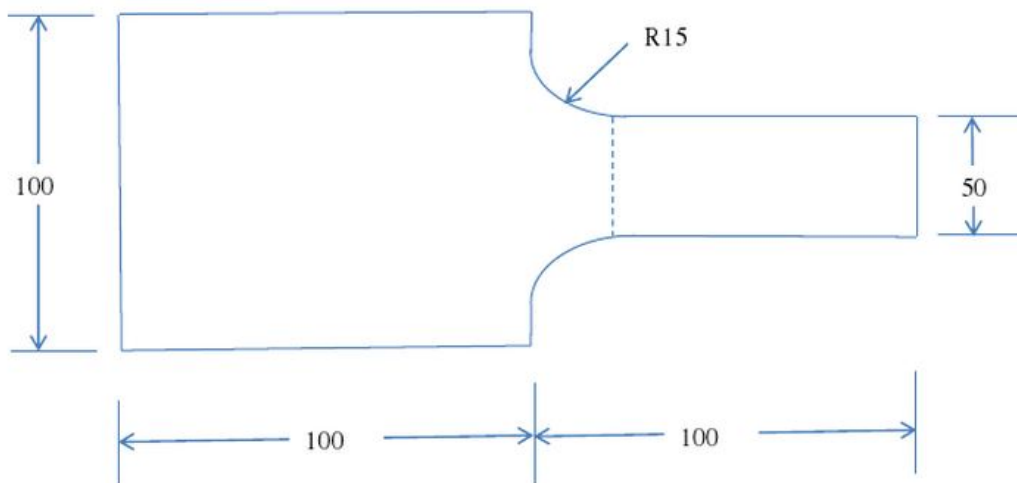
1. Pre-Analysis & Start-Up
 2. Geometry
 3. Mesh
 4. Physics Setup
 5. Numerical Solution
 6. Numerical Results
 7. Verification & Validation
- Exercises
Comments



Note to Cornell students in MAE 3250, Fall 2015: You only need to complete Exercise 2.

Exercise 1

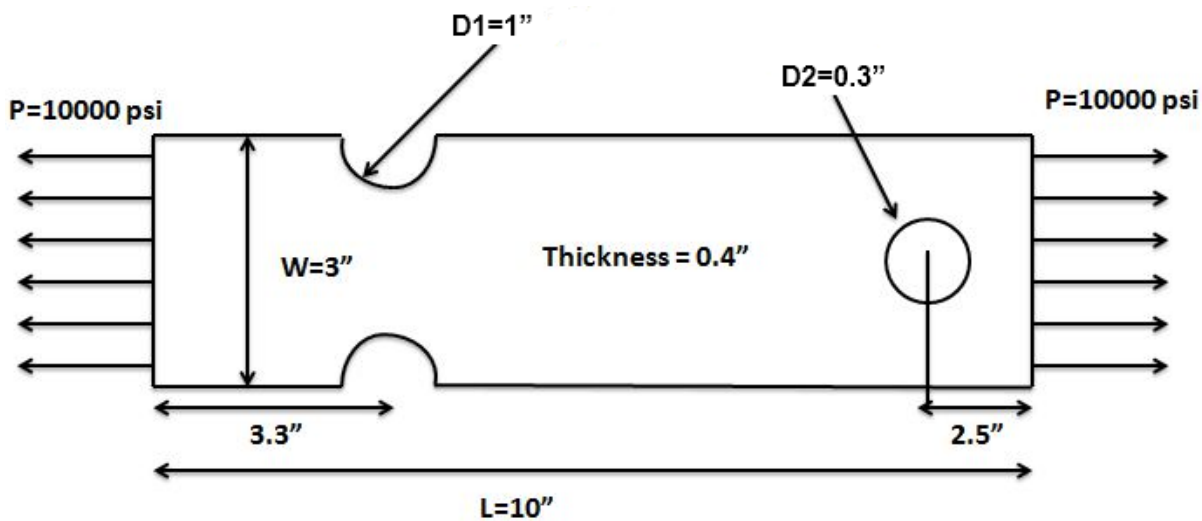
A steel bar with $E=200\text{GPa}$ and a Poisson's ratio of 0.3 is loaded as shown with a distributed load totaling 50,000 N applied to the right end. The bar is 10 mm thick, and other dimensions are given in millimeters.



- a. Consider the left edge to be fixed and apply the load to the right end. Find the maximum stress and maximum displacement in the bar.
- b. Create a path along where the dashed line is shown and record the maximum and minimum stress along this path.
- c. Discuss how the maximum stress and maximum displacement change when the radius is reduced.

Exercise 2

Consider the bar shown below. The plate is made of **A514 steel** with a modulus of elasticity of **29e6** psi and a Poisson of **0.3**. Assume plane stress conditions are valid. Obtain the finite-element solution for this problem using ANSYS.

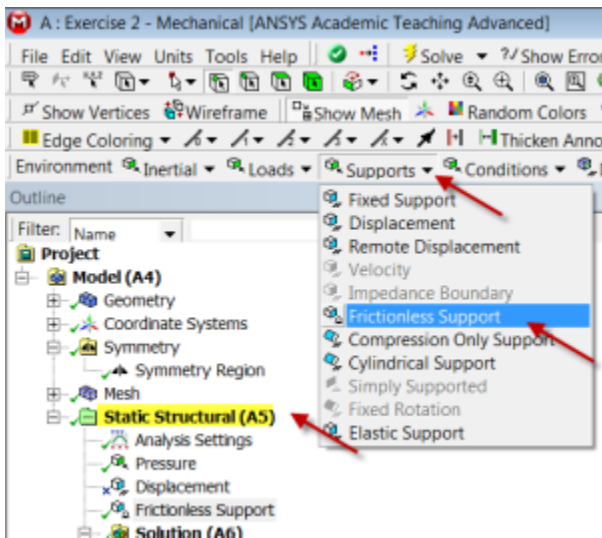


Assignment:

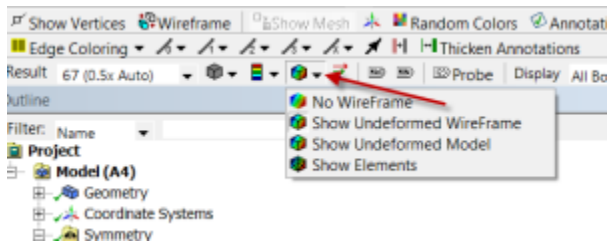
1. Make a plot of the mesh.
2. Make a plot of the deformed shape. Include the undeformed shape in the same plot (see tip below on how to turn this on). Using this plot, discuss whether you have applied the displacement boundary conditions correctly.
3. Compare the displacement at the right edge (relative to the left) with a back-of-the-envelope estimate.
4. Make a plot of the σ_{xx} variation in the bar. Deduce the stress concentration factor for the hole on the right from this plot. Compare this to the theoretical value for a small hole in an infinite plate.
5. Determine how your stress concentration factor changes when you use a different mesh. Indicate the number of nodes and elements for your two meshes (this info can be found in "Details of mesh" when expanding "Statistics"). Also, include a plot of your second mesh.

Tips:

You need to constrain your ANSYS model adequately so that it doesn't fly off to Europa. The figure above doesn't specify any displacement boundary conditions. You can make use of symmetry to impose the y-displacement constraint. Additionally, set the x-displacement on left edge to be zero by selecting Supports > Frictionless Support as shown below. With these two displacement boundary conditions, the model is well constrained while also being consistent with the figure above.



You can turn on the undeformed wireframe using the button shown below.



You can save a copy of a plot using the following icon in the top menu:



Or you can use the Snipping Tool in Windows 7.

[Go to Comments](#)

[Go to all ANSYS Learning Modules](#)