

redAnTS 1 - Verification & Validation

Author: Rajesh Bhaskaran, Cornell University

[Problem Specification](#)

[1. Pre-Analysis & Start-Up](#)

[2. Geometry](#)

[3. Mesh](#)

[4. Physics Setup](#)

[5. Numerical Solution](#)

[6. Numerical Results](#)

[7. Verification & Validation](#)

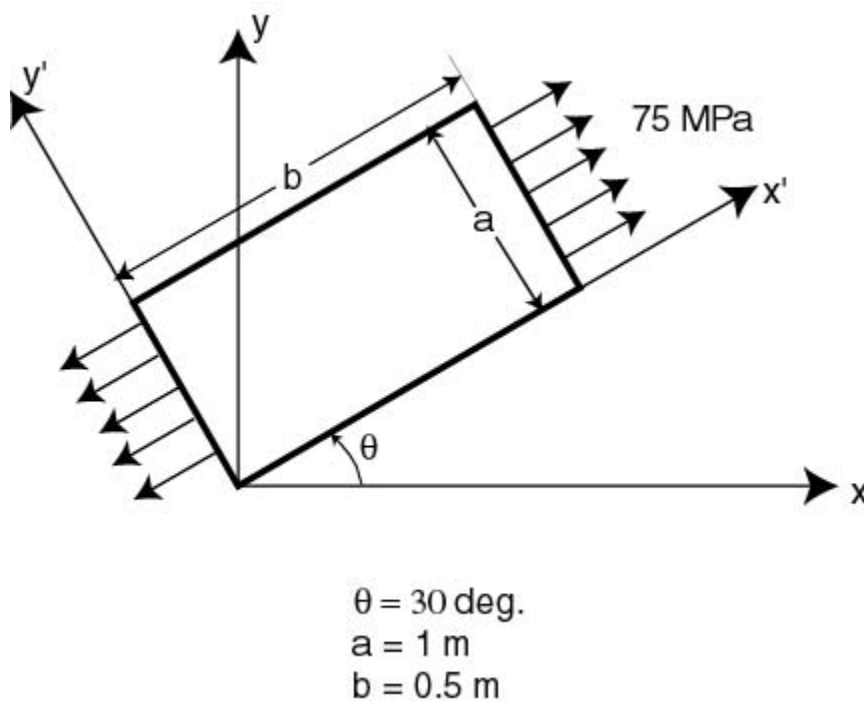
[Comments](#)

Verification & Validation

Verification and validation is a formal process for checking results. Each of these terms has a specific meaning which we won't get into here. As we mentioned way back in Step 1, it is important to compare the redAnTs output to your own calculations: If the solution from the FEA software does not match preliminary calculations, then there is a problem with the simulation.

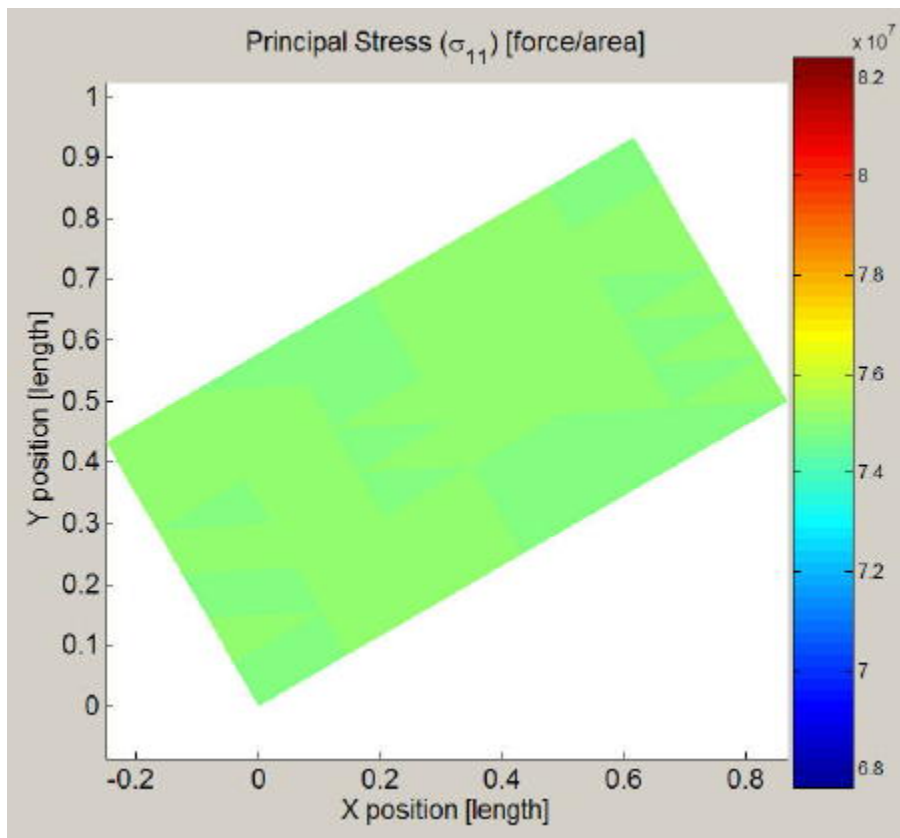
From Pre-Analysis

The rectangle is under uniaxial tension with a load of 75 MPa; therefore, we expect the stress in the x' direction throughout the entire rectangle to be 75 MPa.



From redAnTS

Looking back to your results from redAnTS, we find that the program also found that the principal stress throughout the entire rectangle was 75 MPa, which means we can have some trust in our results.



While for this simulation it may seem trivial to check that the redAnTS output matches our expectations, for more complex problems it becomes absolutely critical to verify your results. As you gain more experience with FEA simulations, you will be able to tell if a complex simulation may not "seem" right. This intuition can save you a great deal of frustration dealing with incorrect results.

This brings us to the end of our first little tour of FEA in redAnTS. Hope you enjoyed the joyride. Goodbye!

[Go to Comments](#)

[Go to all MATLAB Learning Modules](#)