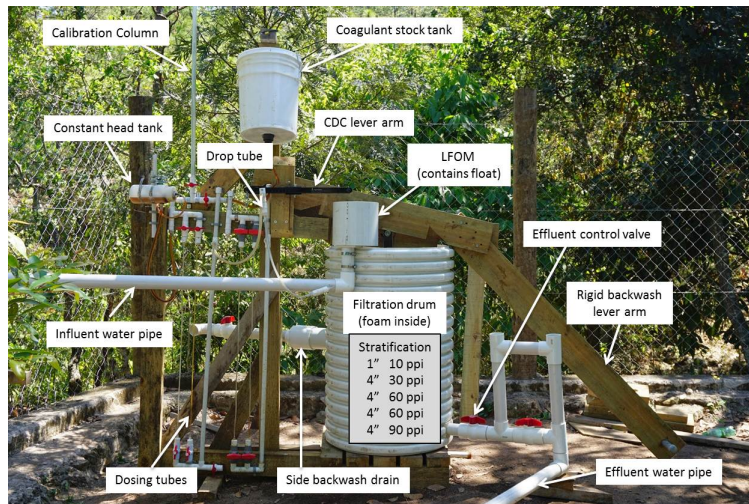


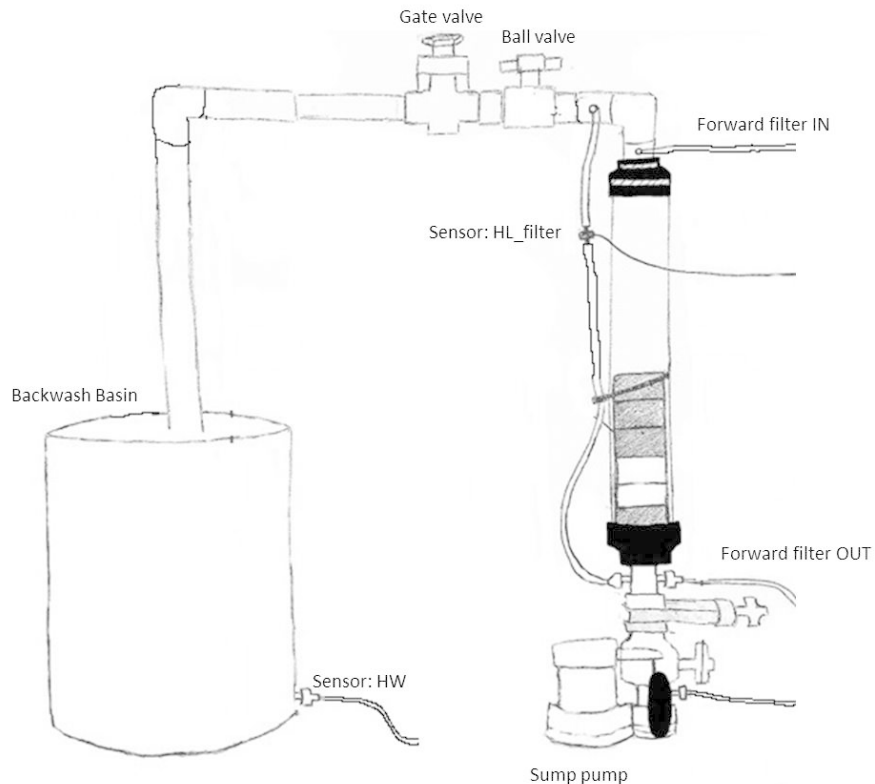
# Foam Filtration

## Foam Filtration

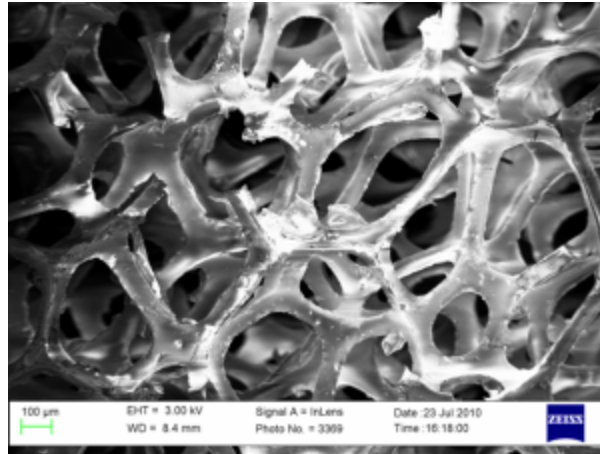
Numerous techniques of water filtration are in use today, most of which involve the use of sand as the porous media. Foam filtration, however, goes beyond traditional water treatment methods and utilizes the filtering capacity of reticulated polyurethane foam. A foam filter requires less surface area, treats higher turbidity water (lab results have shown  $pC^*$  values of 1.5 for 100 NTU influent), wastes less water during backwash, and is less expensive to build than a traditional rapid sand filter. The primary goal of foam filtration is to design a low cost, locally sourced, easy to operate water filtration system for communities of less than 1,000 inhabitants and for disaster-relief scenarios where the community's main water supply has been compromised.



**Figure 1:** Full scale filter deployed in El Carpintero, Honduras during January 2015



**Figure 2:** Sketch of the current implementation of the Small 4" Pipe Filter in the AguaClara Lab



**Figure 3:** Example of reticulated foam used in the foam filtration technology

**Flow through the Filter:** Turbid raw water is dosed with coagulant before moving through an inverted linear flow orifice meter and pouring into the top of the foam filter body. As the water passes through all the foam layers, large particles created during flocculation stick to the pores of the foam, removing them from the water and generating a clean, drinkable effluent. When the filter becomes clogged with large flocs, it must be cleaned by initiating the backwash cycle. The backwash system employs a wooden lever-arm to lift the foam and plunge it through water accumulated in the 24" PVC pipe. This "plunge" creates a high velocity in the pores of the foam, dislodging the captured particles from the pore spaces. The backwash water, which comes out the top of the foam layers, is then drained away, and the filtering cycle may resume.

#### Spring 2015

Throughout the semester, backwash cleaning efficiency experiments were performed on the small-scale filter, designed in Fall 2014 to hydraulically model the full scale filter implemented in El Carpintero. The objective of these experiments was to determine an empirical relationship between backwash pore velocity and the percent mass removal of the particles from the foam during the cleaning cycle. Experimentation with different pore sizes revealed a new mechanism for filtration: the foam acts as a sedimentation tank, providing a large surface area for the flocs to settle. This is contrary to the initial hypothesis that coagulant-covered flocs stuck to the inside of the pore walls, and that a large shear force would be required to remove the flocs during backwash. Evidently, there is still much to be understood with regards to the mechanisms behind filtration and backwash.

Apart from work in the laboratory, the team continues to analyze data collected from experiments performed on the full-scale filter in El Carpintero by AguaClara engineer, Walker Grimshaw, to understand the discrepancies between performance in the laboratory and in the field.

Much of the semester was spent preparing for the EPA P3 Conference held on April 10th and 11th in Washington, DC. The team fabricated a small scale model of the technology, prepared a technical report, and created a poster display for the competition, and received an Honorable Mention for its efforts in creating an "Off-Grid Solution to Drinking Water Treatment."

#### Fall 2014

The Fall 2014 Foam Filtration team has focused its efforts in exploring the new backwashing method with the design and construction of a new apparatus: the 4" Pipe Small Scale Filter. Experiments performed on this filter, designed to hydraulically model the full scale filter, will be used to determine an empirical relationship between backwash pore velocity and the percent mass removal of the particles from the foam during the cleaning cycle.

The Chemical Dose Controller was redesigned with (1) an altered constant head tank constructed from Nalgene bottles or a 3" pipe, (2) the float situated inside the LFOM, eliminating the need for an entrance tank, and (3) major headloss elements that run vertically to reduce overall size.

Tests through mass spectrometry have confirmed that chemicals are leaching from the foam, however more testing must be done to determine the composition of the leachate. Designs for the on-the-ground implementation of the foam filter pilot project have been drawn up by AguaClara Engineer, Walker Grimshaw in Honduras. This design includes the set-up for the chemical stock tanks, designs for managing backwash and finished water, and the possible addition of a grit chamber.

The lever arm used for plunging the foam was redesigned with a rigid connection to the base of the filter support. This rigid connection eliminates large movement in the z-direction and the need for guidance by the barrel lid on the 55-gallon drum. The open-top design allows for integration of the new CDC /LFOM design: influent raw water pours out of the LFOM and directly into the filter body.

[Read more](#) about what the foam filtration team hopes to accomplish through Future Research.

#### Team Members

[Marlana Hinkley](#)

[Alena Hutchinson](#)

[Ethan Keller](#)

[Alicia Peters](#)

[Email Team](#)

Documents

	Challenges	Tasks	Symposium	Final Presentation
Spring '15		? Unknown Attachment	? Unknown Attachment	? Unknown
Fall '14		? Unknown Attachment	? Unknown Attachment	? Unknown
Summer '14	? Unknown Attachment	? Unknown Attachment		
Spring '14		? Unknown Attachment	? Unknown Attachment	? Unknown
Fall '13	? Unknown Attachment		? Unknown Attachment	? Unknown
Spring '13	? Unknown Attachment	? Unknown Attachment	? Unknown Attachment	? Unknown
Fall '12	? Unknown Attachment	? Unknown Attachment		? Unknown
Summer '12	? Unknown Attachment	? Unknown Attachment	? Unknown Attachment	? Unknown
Spring '12	? Unknown Attachment	? Unknown Attachment	? Unknown Attachment	? Unknown
Fall '11	? Unknown Attachment	? Unknown Attachment	? Unknown Attachment	? Unknown
Spring '11	? Unknown Attachment	? Unknown Attachment	? Unknown Attachment	? Unknown

Past Research

[Spring 2011](#)

[Fall 2010](#)

[Summer 2010](#)

[Spring 2010](#)

[Reflection Reports](#)

[General Filtration Page](#)

