

FLUENT - Steady Flow Past a Cylinder - Step 7

Problem Specification

1. Create Geometry in GAMBIT
2. Mesh Geometry in GAMBIT
3. Specify Boundary Types in GAMBIT
4. Set Up Problem in FLUENT
5. Solve!
6. Analyze Results

7. Refine Mesh

Problem 1

Problem 2

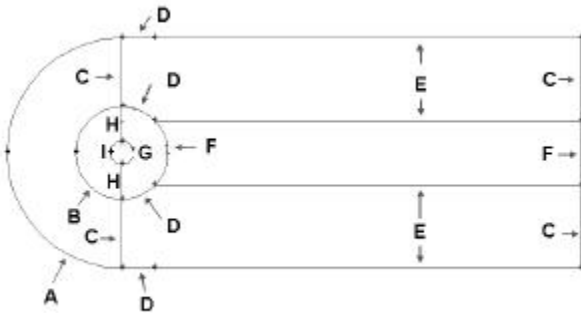
Step 7: Refine Mesh

Is our mesh refined enough? Will the current mesh give us an accurate representation of the physical flow? Mesh density determines the truncation error of our simulation. With too little mesh density, the result we obtain will be inaccurate. With too many mesh elements, we will be wasting unnecessary computational power (long computational time!). To get the optimum mesh density, we do mesh sensitivity analysis.

For this purpose, we will create three models with different mesh densities. We will create a coarser mesh and a finer mesh and compare all the three meshes together.

For coarse mesh, reduce the mesh density by half of the original mesh. For fine mesh, double the mesh density compared to the original density.

Follow Step 1 through Step 5. At step 2, use the following edge mesh properties instead.



Higher Resolution Image

Label	Medium Mesh (Original)	Coarse Mesh	Fine Mesh
A	Interval Count: 36, Double First Length: 0.5	Interval Count: 24, Double First Length: 0.7	Interval Count: 54, Double First Length: 0.3
B	Interval Count: 36, Double First Length: 0.2	Interval Count: 24, Double First Length: 0.3	Interval Count: 54, Double First Length: 0.12
C	Interval Count: 30, First Length: 0.1	Interval Count: 20, First Length: 0.2	Interval Count: 45, First Length: 0.09
D	Interval Count: 18	Interval Count: 12	Interval Count: 27
E	Interval Count: 90, First Length: 0.1	Interval Count: 60, First Length: 0.15	Interval Count: 135, First Length: 0.07
F	Interval Count: 36	Interval Count: 24	Interval Count: 54
G	Interval Count: 72	Interval Count: 48	Interval Count: 108
H	Interval Count: 30	Interval Count: 20	Interval Count: 45
I	Interval Count: 36, Double First Length: 0.05	Interval Count: 24, Double First Length: 0.07	Interval Count: 54, Double First Length: 0.03



You can also change the appropriate parameters (interval count and first length) in your previous journal file to obtain different meshes.



To double the mesh density, the interval count is increased by a factor of 1.5. The first length is decreased by a factor of about 1.5. To half the mesh density, the interval count is decreased by a factor of 1.5. The first length is increased by a factor of about 1.5. Think about why it is so.

After that, you should have three meshes with following mesh elements.

	Coars e	Mediu m	Fine
No. of cells	6240	14040	31590

Drag Coefficient Comparison

For each mesh, take note of the drag coefficient and compare with each other.

	Coarse	Medium	Fine
Cd	2.4981	2.4941	2.4927
% dif	0.160378	0	0.056132

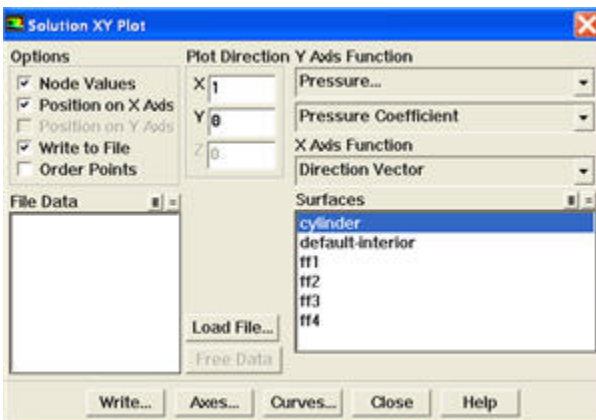
Taking medium as benchmark, we compare coarse and fine mesh. Note that the difference in drag coefficient between three meshes is negligibly small. For analysis of drag coefficient, it seems that coarse mesh provides enough resolution.

Pressure Coefficient Comparison

Let's analyze pressure coefficient plot around cylinder for three different mesh before we conclude which mesh to use. Let's start with a coarse mesh.

Plot > XY Plot...

Change the **Y Axis Function** to **Pressure...**, followed by **Pressure Coefficient**. Then, select **cylinder** under **Surfaces**. Check the option **Write to File**.

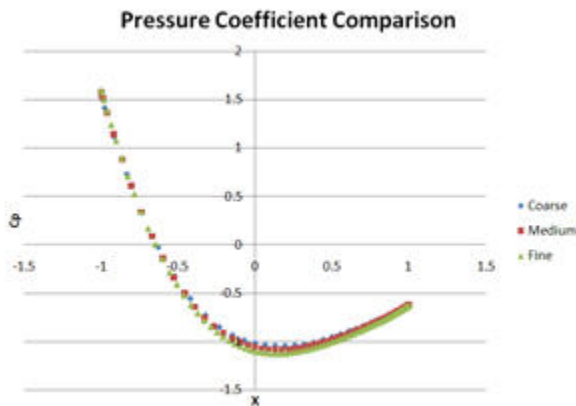


Click **Write...**

Enter the file name and directory to save.

Do the same for medium and fine meshes by opening different case and data files.

After that, open the files that you have written with excel spreadsheet. Compile and plot the data accordingly.



[Higher Resolution Image](#)



A quick and dirty way plotting three different mesh is to use FLUENT directly. **Plot > XY Plot...** You can **Load File...** that you have saved previously. However, using this way, you have less control of how you can present the data and is not recommended for report presentation.

[Go to Problem 1](#)

[See and rate the complete Learning Module](#)

Go to [all FLUENT Learning Modules\](#)