

# Design Library Task Force

Presentation to the Student Library  
Advisory Committee

22 November 2010

# Design Library Task Force Membership

Bonna Boettcher, Music Librarian and Adjunct Professor of Music (co-chair)

Lily Chi, Associate Professor, Architecture (co-chair)

Maria Fernandez, Associate Professor, History of Art

Neema Kudva, Associate Professor, City and Regional Planning

Howard Raskin, Librarian, Mann Library

Oya Rieger, Associate University Librarian, Digital Scholarship Services

Martha Walker, Fine Arts Librarian

With assistance from

Mitchell Pride, AAP Graduate Student (through August 2010)

Monica Freundt, AAP Graduate Student (September-December 2010)

## Task Force Charge

“The Dean of the College of AAP and the University Librarian are asking a small committee of faculty and librarians to focus on a vision for a library of a design college, to consider the **functional programs**, imagine the **services, space utilization**, and outline the **expertise needed**. The committee should consider best practices, identify trends, and consider possible services for the future. The aspiration is to create a world-class, future-oriented facility to support an important area of teaching, scholarship and creative practice at Cornell.”

# Methodology: External libraries

Identified peer libraries to survey; developed survey

Columbia University: Avery Library

Harvard University

Frances Loeb Library (Design)

Fine Arts Library

Yale University: Haas Family Library

Princeton University: Architecture Library

University of Pennsylvania: Fisher Fine Arts Library

MIT: Rotch Library

University of Michigan: Art, Architecture, and Engineering Library

Rhode Island School of Design: Fleet Library

Sci-Arc: Kappe Library

Massachusetts College of Art: Morton R. Godine Library

Stanford University: Art & Architecture Library

Duke University: Lilly Library

University of California, San Diego: Arts Library

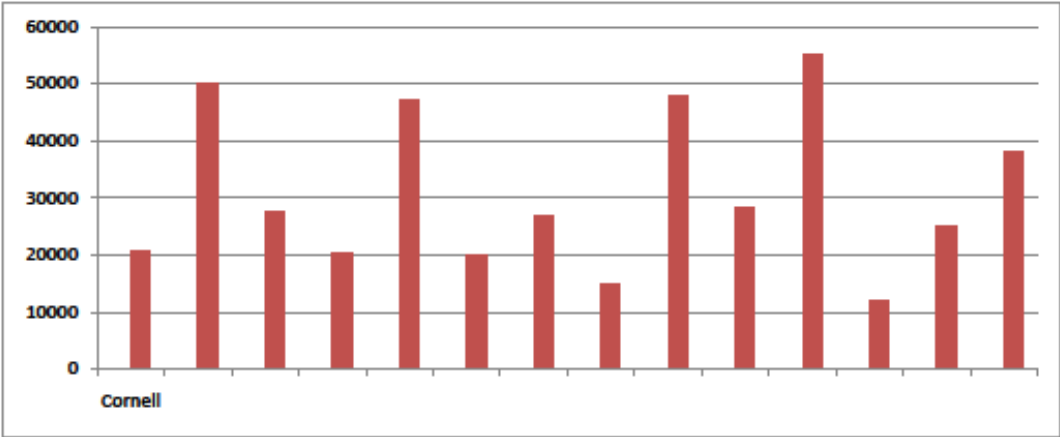
## Methodology: External libraries

Peer libraries were asked to supply information on:

- Collections
- User services
- Spatial relations (floor plans and arrangements of spaces)
- Plans for the future

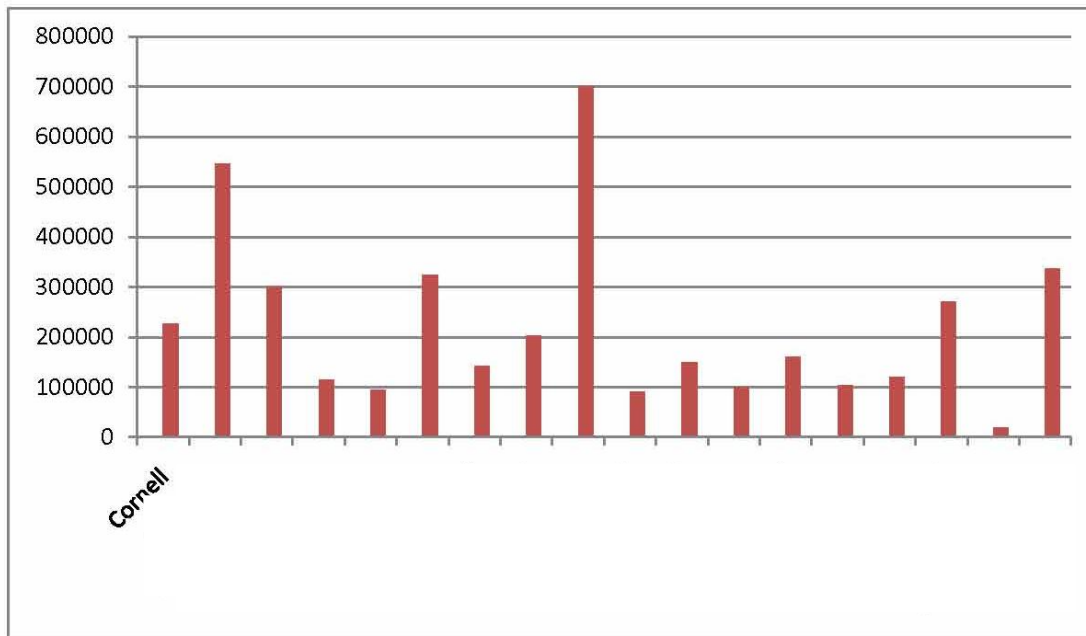
Physical Space: Square Feet

Cornell	20,647
	50,000
	27,500
	20,434
	47,000
	19,934
	26,700
	14,846
	47,933
	28,420
	55,000
	12,000
	25,000
	38,000



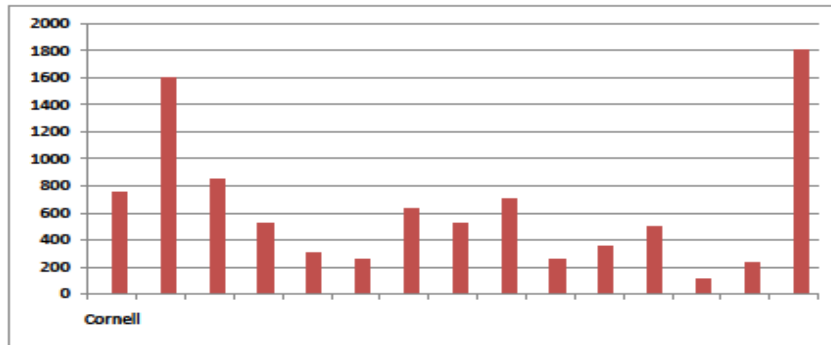
Print Collections

Cornell 227666  
546685  
300000  
115000  
95000  
325000  
142196  
202339  
700000  
90000  
150000  
100000  
160000  
103534  
120000  
270000  
20000  
337328



Current Periodicals

Cornell  
750  
1600  
849  
519  
300  
250  
625  
516  
700  
254  
355  
500  
106  
234  
1800

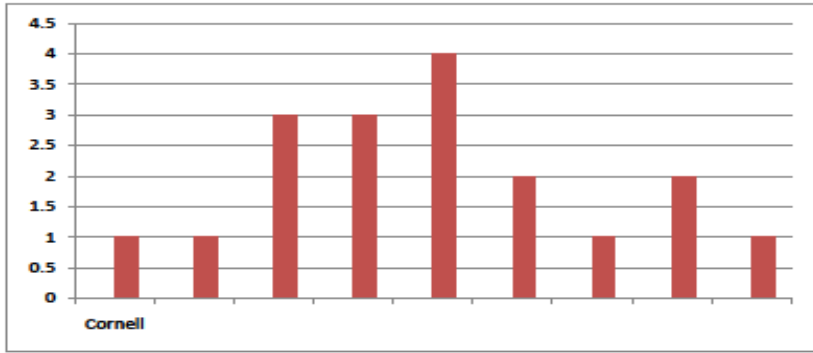




**Collaborative Spaces**

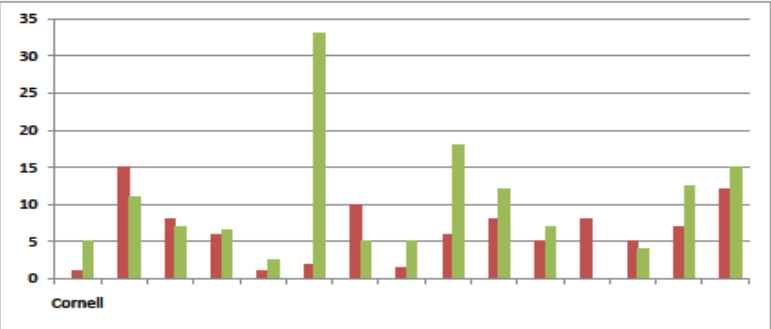
**Cornell**

1  
1  
3  
3  
4  
2  
1  
2  
1



Professional Librarians/Archivists - Support Staff

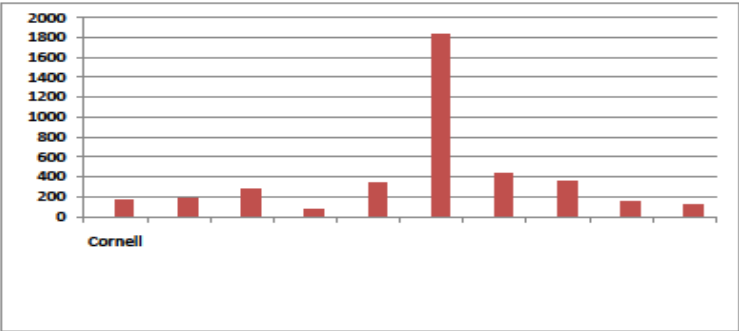
Cornell	1	5
	15	11
	8	7
	6	6.5
	1	2.5
	2	33
	10	5
	1.5	5
	6	18
	8	12
	5	7
	8	
	5	4
	7	12.5
	12	15



Red= Professional librarians  
Green=Support Staff

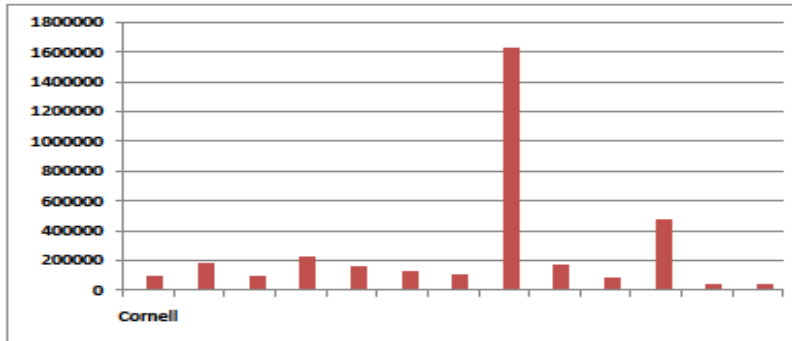
User Seating

Cornell	168
	185
	271
	68
	347
	1824
	432
	350
	146
	126



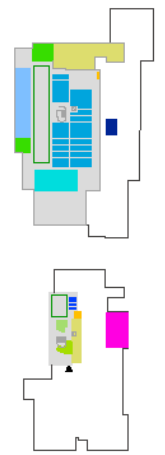
Gate Counts

Cornell  
86528  
176345  
94139  
222000  
160000  
122973  
96532  
1629948  
167385  
84500  
475000  
33405  
32278

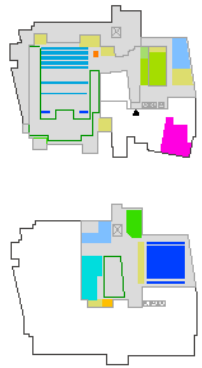




**Column**  
 1986, POLYMER  
 LOCATED IN BONE BUILDING AS PRIMARY ACCESS



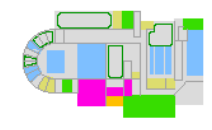
**Open**  
 BUILT IN 1976 (OPEN ACCESS)  
 LOCATED IN BONE BUILDING AS PRIMARY ACCESS



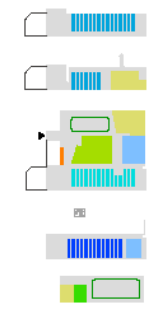
**Wall**  
 1986 RECONSTRUCTION AND ADDITION, 2002  
 LOCATED IN BONE BUILDING AS PRIMARY ACCESS



**Reception**  
 80' RECONSTRUCTION BUILT IN 2002  
 LOCATED IN BONE BUILDING AS PRIMARY ACCESS



**Open**  
 BUILT IN 1986 (OPEN ACCESS)  
 LOCATED IN BONE BUILDING AS PRIMARY ACCESS



**Wall**  
 BUILT IN 1986 (OPEN ACCESS) MILLER BUILDING CHANGES  
 1986 RECONSTRUCTION AND ADDITION, 2002  
 LOCATED IN BONE BUILDING AS PRIMARY ACCESS

**UPPER FLOOR AND FINISH**



# Methodology: Highlights from the external surveys

## Future plans

- 8 of 9 libraries who shared future plans are increasing or ameliorating **group study/ collaborative spaces**. (1 of these is “increasing variety and number of study areas”). 2 of the 8 are reducing stack area for group spaces, or reducing print holdings in favor of electronic copies. Both, however, are in major urban centers where there are many other academic and public libraries.
- Conversely, 3 of the same 8 are amplifying holdings or access to a **special material holding** (maps, archive material, special collection).
- 1 library in a competitive design school is creating a **Materials library**
- 1 library is rethinking traditional reference desk model for this service
- 1 library is considering events held in library after hours

# Methodology: Primary Cornell constituents

Architecture

Art

City and Regional Planning

History of Art

Landscape Architecture

Design and Environmental Analysis



## Methodology: Primary Cornell constituents

Constituents were asked to respond to questions in the following areas

- Collections
- User services
- Spaces
- Equipment/technology
- Future plans
- Other comments

# Methodology: Highlights from internal surveys

Strong convergence on a number of points:

- Collections

- Striking commitment in 4 of 5 units (students and faculty) to ongoing development of the **print collection**, and to the concept of a **browsing library**.

Arguments for these: a) import of material, and scalar evidence/experience for fields engaged in the study and creation of visual, artefactual, and spatial conditions; b) pedagogical & research import of discovery in browsing, in the 'wide-angle' view.

- At the same time: almost universal desire for **expanded digital collection**: journals, visual archives (including KVR), databases, maps, film/video/podcasts...
- Strong interest from students & faculty from 2 of 3 responding units to a **materials library**

# Methodology: Highlights from internal surveys

Strong convergence on a number of points:

- Spaces

- **group work space(s)** that could be used collaboration (on-site, remote) and instruction.

Location in the library to allow use of collection. Well equipped with computing, A/V, video conferencing...

- **quiet study spaces** daylit, furnished with “a palette” of provisions for individual reading/study

- some interest on **display, exhibition space** for books, current journals, student/interdisciplinary work – often expressed in the desire for more visibility for the holding and/or its constituency, or for the FAL as a collective place.

- desire expressed in varying ways for the FAL to be in close **proximity with**, and therefore at the **center of an expanding network of study/work spaces**: design studios, computer labs, workshops, cafe (though also strong opposition from 1 unit against competition with the Dragon), ...

# Methodology: Highlights from internal surveys

- Services

- **Course reserve services:** maintain, enrich; consider browsable course reserves, as in Olin study shelves
- **Staff expertise** in the work of planners, architects, architectural education, landscape architecture and urban design, visual/design concepts -- for acquisitions, for research/search assistance
- **Augmented staff**
- **Staff expertise in technologies:** computers, scanners, specialized software
- **Individual research assistance**
- **GIS support & workstation**
- **Longer hours**
- **Equipment loans** — maintain current or expand
- **Digital librarian** — expertise in online resources

## Methodology: Highlights from internal surveys

- Equipment/Technology

Most common requests:

- **scanners**, integrated into email
- maintain, augment **equipment loan**
- more **computer stations, printers, scanners, more viewers** for digital collection
- equip seminar/collaborative space with **AV, broadcasting, teleconferencing...**

## Next steps

- Chairs are working on a draft of the final report
- Task force will meet one more time to discuss draft and finalize
- On track to deliver report to Anne Kenney, University Librarian, and Kent Kleinman, Dean of Architecture, Art, and Planning by 20 December