



# INTRODUCTION TO OCLC CONNEXION

OCTOBER 2020

# WHAT IS OCLC CONNEXION?

- Connexion is our interface to WorldCat, a shared bibliographic database
- We use the “client” (a program is loaded directly on the computer as opposed to a web-based program)
- Catalog records are contributed (created) and updated primarily by member libraries
- OCLC also creates catalog records as a fee-based service for libraries
- Also contains LC name and subject authority data
  - We contribute name authority records (NACO) to the LC files via OCLC



# WHY CATALOG IN OCLC?

- Shared (collaborative) environment
  - Philosophical reasons: our work benefits users beyond CUL
  - Practical reasons: we benefit from other catalogers' work
- Support for InterLibrary Loan
- Migration to FOLIO: OCLC Connexion provides a reliable MARC creation & editing environment

# LOGGING IN TO OCLC

- Use your individual login
- Saved to your client (on your computer)
- Laura can help with login/authorization level questions



# QUICK TOUR OF THE MENU & TOOLBAR

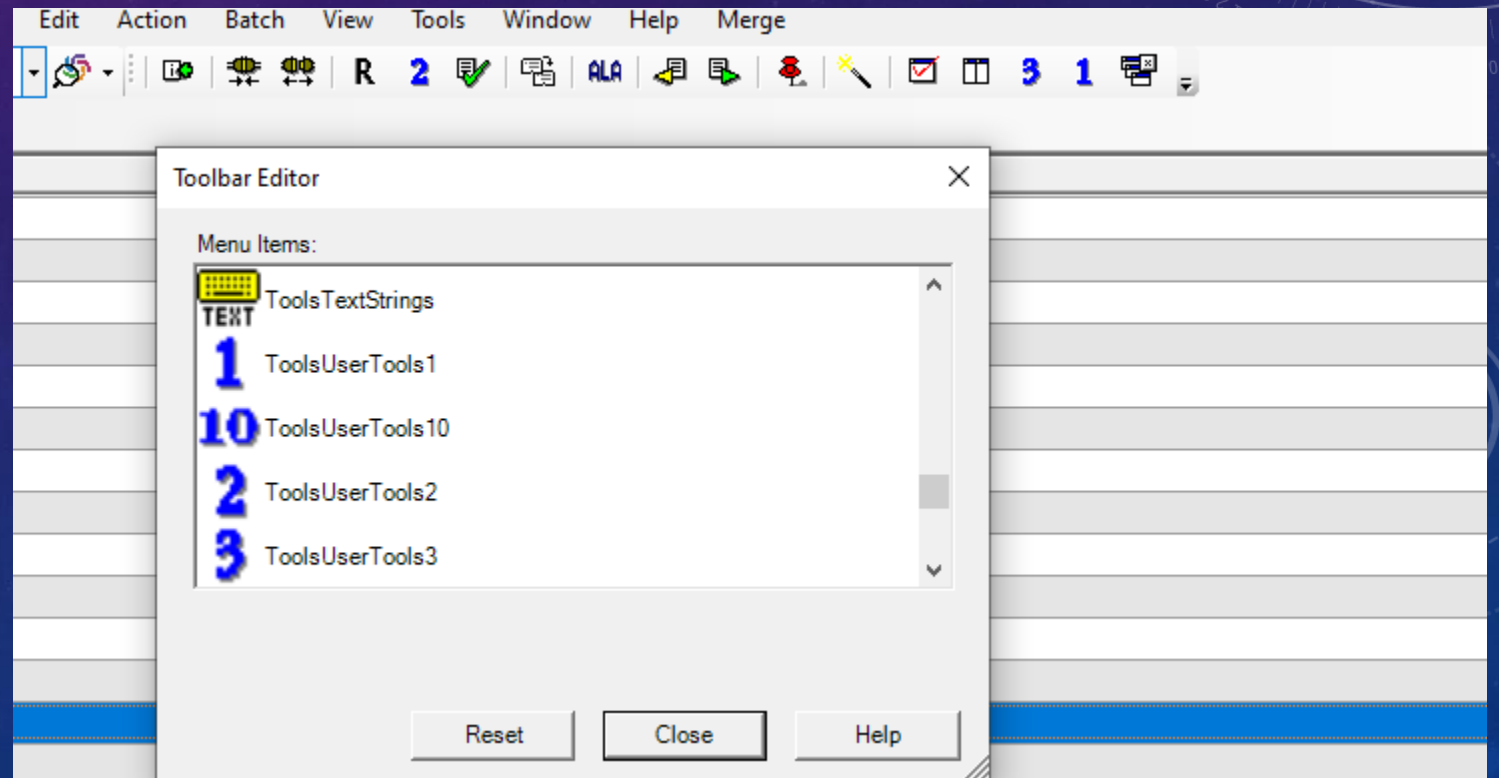
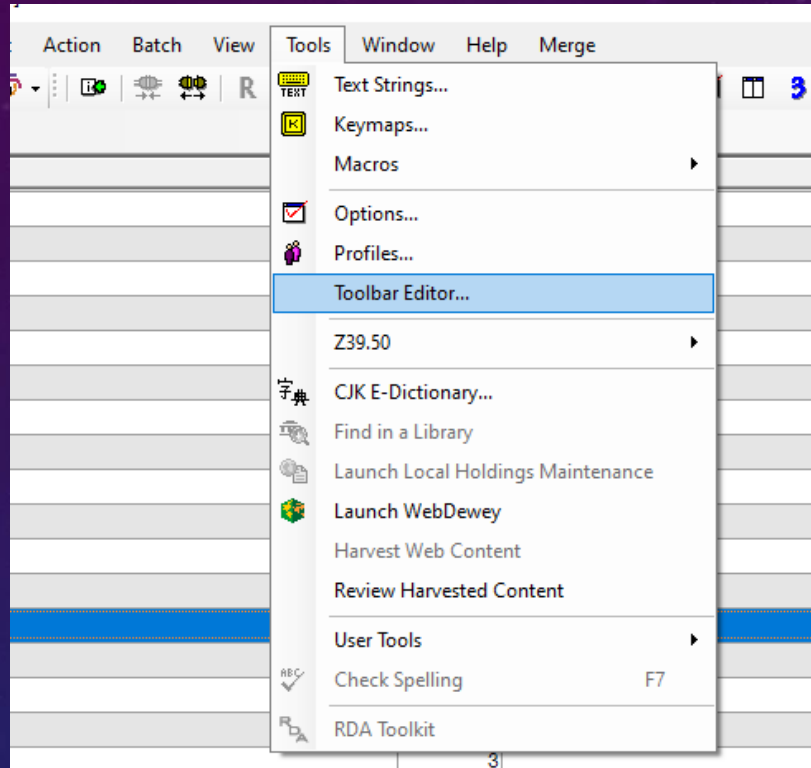


The top bar (menu) is static – these text labels are what you will always see

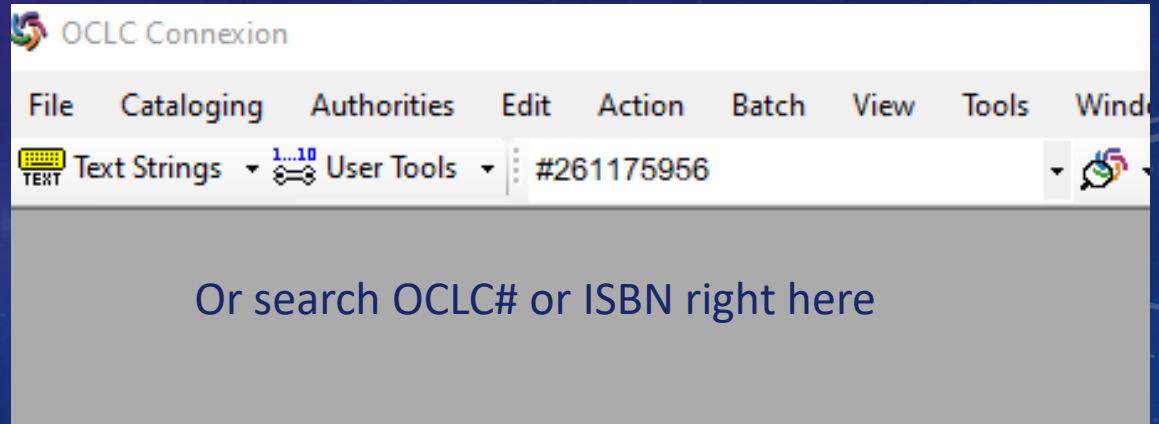
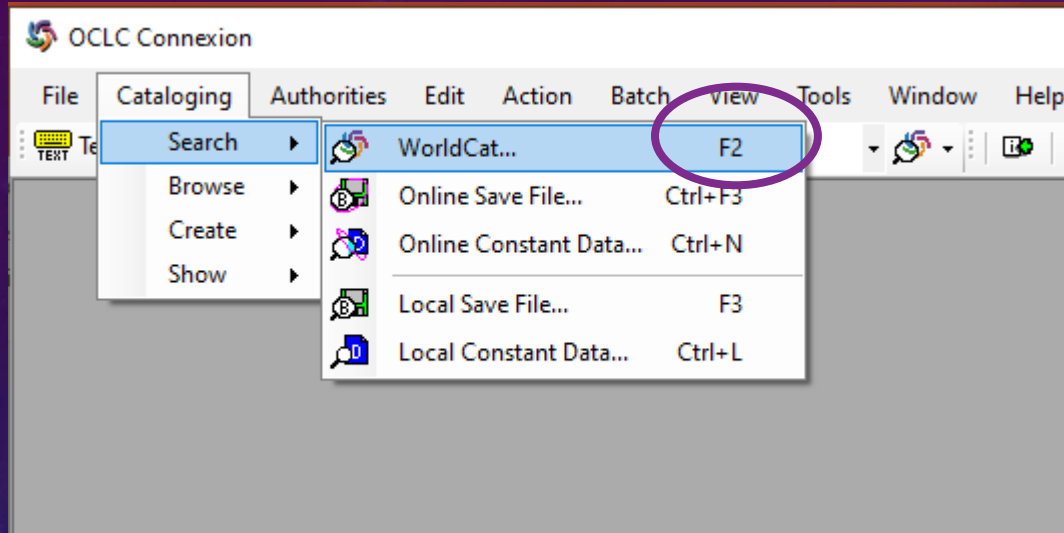
The toolbar below it (with icons) is customizable; this is what Laura's looked like on 9/24/2020 (pretty heavily customized)

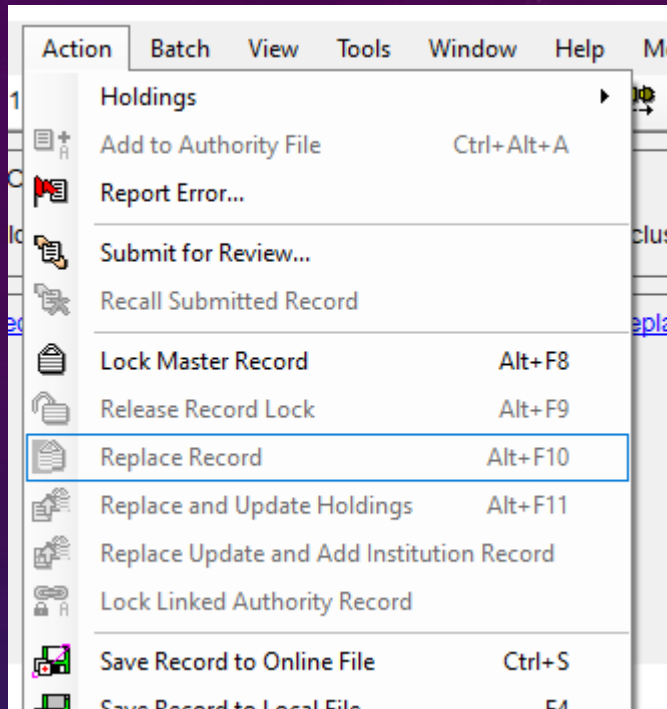
# TOOLBAR CUSTOMIZATION

Click and drag icons between toolbar and editor box



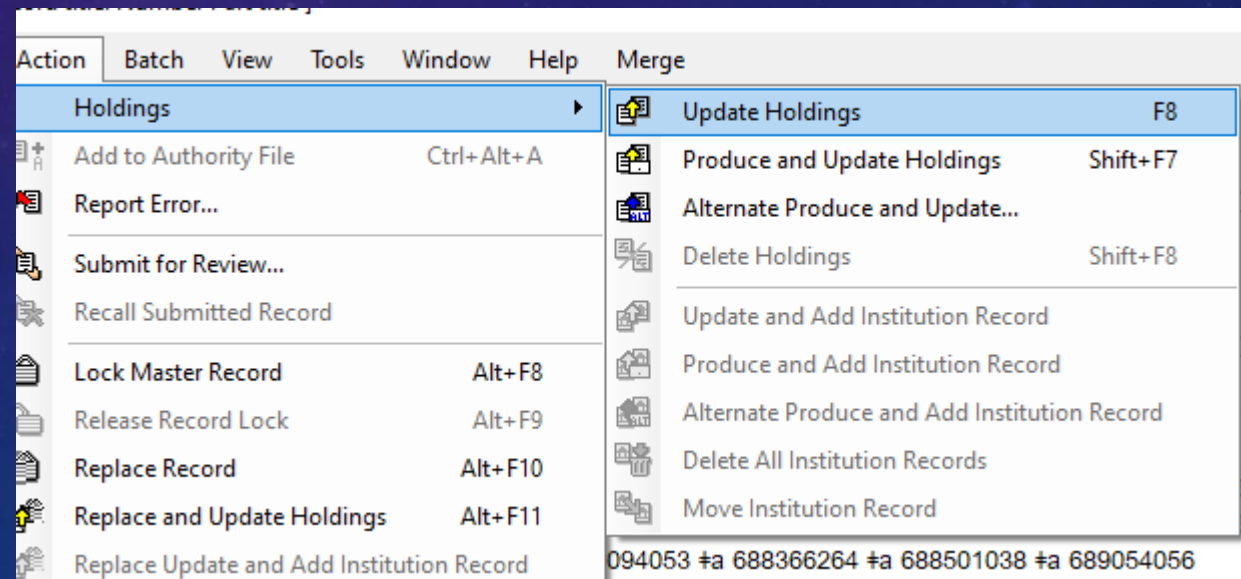
# COMMON ACTIONS





“Replace Record” is grayed out because I haven’t made any changes to the record I’m viewing

You don’t need to update holdings (there’s a batch process that does that for us); but you might need to delete them if we don’t actually have something (e.g., it’s been withdrawn)





# SAVE FILES: LOCAL VS ONLINE

## Local – your computer only

Save #	Contributor/Creator	Title	Control #	Date	Call Number	Date/Time Added	Held	Code	Format
1	Pederson, Joshua, author.	Sin sick : moral injury in war and literature /	NEW 2021		PN 56 .P914	9/28/2020 3:05:12 PM		C000	Books
2	OCLC, A. M. E. (Author Main...)	Test record, title. RDA version / Number Part title :	NEW 2013			9/29/2020 10:53:39 AM		C000	Books

These are “my” titles only. Records stay here until I delete them. “Delete” means deleting the save file version, not the master record (if there is one).

## Online – all CUL Connexion users

Save #	Contributor/Creator	Title	Modified	Expires	Workflow	Source	Delete Holdings	Export	Label	Produce
1	Talidi, 'Abd Allāh, author.	Manāqib al-ummah al-Muhammadiyah wa-...	20200107	0	In Process	OCLC		C		
2	Wright, Laura E., author.	I love OCLC : my life as a cataloger ; Autu...	20191023	0	In Process	Workform				
3	Prorok, Johan, 1974- author.	La responsabilité civile sur les marchés fin...	20191024	0	In Process	OCLC				
4	Miyamoto, Tsuneichi.	Kamikōchi fukin / Miyamoto Tsuneichi ; Ka...	20200313	0	In Process	OCLC				
5	Gowland, Rebecca, author.	Human identity and identification / Rebecc...	20200106	0	In Process	OCLC				
6	Lawrenson, Brian.	Following Marco Polo's silk road / by Brian...	20200114	0	In Process	OCLC				
7	Nikolič, Kosta.	Vladi Kraljevine Jugoslavije u Drugom sve...	20200110	0	In Process	Workform				
8	Falk, Victor von.	Alfred Dreyfus : skáldsaga byggð á sönnun...	20200629	0	In Process	OCLC				
9		Mājhī kahānī : Kō. Mālatī Gādagīla / sampā...	20200825	0	In Process	Derived		C		

These are “our” titles. If I produce or replace a record from here, the save file will vanish. “Delete” means deleting the save file version, not the master record (if there is one).

# SEARCH & BROWSE (A WHIRLWIND REVIEW)

Search WorldCat

Command Line Search

ti:words in any title order pn:author name in any order

Keyword/Numeric Search

Search for:  Retain Search

words in any title order Title (ti:)

AND author name in any order Personal Name (pn:)

AND Title Phrase (ti=)

Language: [Any] + Format: [Any] Internet: [Any]

Source: [Any] Microform: [Any] Years: Material Type: [Any]

Apply Language of Cataloging Limiter

English

Search Results:

Display using GLIMIR clustering

Enter Diacritics... Expand/Collapse

Settings... OK Cancel Clear Search Help

These two searches (command line / drop-down boxes) are identical

Language of cataloging limiter can be helpful

GLIMIR clustering box is easy to accidentally select and will make your searches fail!

# RESULTS LIST FROM SEARCH (TRUNCATED DISPLAY)

Record	Title	Name or 245	Publisher	Date	L	Held	Control #	CatL
1	1995 ACSM/ASPRS Annual Convention & ...	American Congress on Surveying and M...	American Co...	1995			775942858	eng
2	BU OCLC test record 4.		BLCMP,	1972			1180821522	eng
3	Caddo River, Pike and Montgomery count...		[Arkansas Ga...	2004			1132293576	
4	Canada :		Fitzhenry &...	2002	D		50803210	eng
5	CONTENTdm CDI Crosswalking test reco...	OCLC, A. M. E. (Author Main Entry), 190...	OCLC,	1977			476809357	eng
6	CONTENTdm CDI Serial Publications test...	OCLC, A. M. E. (Author Main Entry), 1900-	OCLC,	1977			748562040	eng
7	CONTENTdm CDI Serial Publications test...	OCLC, A. M. E. (Author Main Entry), 1900-	OCLC,	1977			314376908	eng
8	CONTENTdm CDI Serial Publications test...	OCLC, A. M. E. (Author Main Entry), 1900-	OCLC,	1977			299755634	eng
9	CONTENTdm test record, title :	OCLC, A. M. E. (Author Main Entry), 1900-	OCLC,	1977			755511860	eng
10	CONTENTdm test record, title VM :	OCLC, A. M. E. (Author Main Entry), 1900-	OCLC,	1977			908932763	eng
11	CONTENTdm test record, title VM :	OCLC, A. M. E. (Author Main Entry), 1900-	OCLC,	1977			847969988	eng
12	CONTENTdm test record, title VM :	OCLC, A. M. E. (Author Main Entry), 1900-	OCLC,	1977			844959515	eng
13	CONTENTdm test record, title VM :	OCLC, A. M. E. (Author Main Entry), 1900-	OCLC,	1977			233651859	eng
14	Eun's test record :	last name, first name.	Shared Cat...	2001			1106367691	eng
15	Fuller test record, title, call number suppre...		OCLC,	1977			33836707	eng
16	Inn-Reach Test Title: GCPL Test Record.	Innovative Test Author.		uuuu			1011918090	eng
17	[International newsreel.			1928			423043693	eng
18	The Iowa state constitution :	Stark, Jack, 1939-	Greenwood P...	1998	D	Held/...	37843700	eng
19	The law of companies /	Courtney, Thomas B., author.	Bloomsbury...	2012	D		797981059	eng
20	Master the GRE®, 2015 :		Peterson's,	2014			1052703835	eng
21	Matching Test OCLC DCG Test Record fr...		DC-Publisher	uuuu			895032840	eng
22	Microsoft Access 2010 :	Kinser, Amy.	Pearson,	2012	D		743432508	eng
23	New Library test record :		Billbo Pub.,	2006			1119558204	eng
24	New Budman's questions and answers on	Budman, Jack	National Lear	1975			1029421520	eng





# RESULTS LIST (BRIEF DISPLAY)

Record	Description
1	American Congress on Surveying and Mapping. Convention (55th : 1995 : Charlotte, N.C.) 1995 ACSM/ASPRS Annual Convention & Exposition technical papers : Charlotte, North Carolina, February 27-March 2, 1995. Bethesda, Md. : American Congress on Surveying and Mapping ; American Society for Photogrammetry and Remote Sensing, ©1995. 4 volumes CatL:eng OCLC: 775942858, Holdings: 2
2	BU OCLC test record 4. BLCMP, 1996. [SERIAL] CatL:eng OCLC: 1180821522, Holdings: 1
3	Caddo River, Pike and Montgomery counties ... annual fish population sampling report (TEST RECORD) [electronic resource]. [Arkansas Game & Fish Commission, Fisheries Division?] 2004-2005 electronic text, volumes : illustrations (some color), color maps [COMPUTER FILES] OCLC: 1132293576, Holdings: 0
4	Canada : our century in sport, 1900-2000 / with assistance from the archives of Maclean's. Markham, Ont. ; Allston, Mass. : Fitzhenry & Whiteside, 2002. xv, 592 pages : illustrations (some color) ; 32 cm CatL:eng DLC OCLC: 50803210, Holdings: 86
5	OCLC, A. M. E. (Author Main Entry), 190?, creator. Uniform title. English CONTENTdm CDI Crosswalking test record, title [microform] : used to produce test digital collection services integrated with Connexion DO NOT DELETE / by OCLC testing. 1st ed. Columbus, Ohio : OCLC, 1977. 200 pages : illustrations ; 30 x 30 cm. CatL:eng OCLC: 476809357, Holdings: 1
6	OCLC, A. M. E. (Author Main Entry), 1900- Uniform title. English CONTENTdm CDI Serial Publications test record, title : used to produce test digital collection services integrated with Connexion DO NOT DELETE / by OCLC. 1st ed. Columbus, Ohio : OCLC, 1977. 200 pages : illustrations ; 30 x 30 cm. CatL:eng OCLC: 748552040, Holdings: 1
7	OCLC, A. M. E. (Author Main Entry), 1900- Uniform title. English CONTENTdm CDI Serial Publications test record, title : used to produce test digital collection services integrated with Connexion DO NOT DELETE / by OCLC. 1st ed. Columbus, Ohio : OCLC, 1977. 200 pages : illustrations ; 30 x 30 cm. CatL:eng OCLC: 314376908, Holdings: 1
8	OCLC, A. M. E. (Author Main Entry), 1900- Uniform title. English CONTENTdm CDI Serial Publications test record, title : used to produce test digital collection services integrated with Connexion DO NOT DELETE / by OCLC testing 099 field crosswalk. 1st ed. Columbus, Ohio : OCLC, 1977. 200 pages : illustrations ; 30 x 30 cm. CatL:eng OCLC: 299756634, Holdings: 1
9	OCLC, A. M. E. (Author Main Entry), 1900- Uniform title. English CONTENTdm test record, title : used to produce test digital collection services integrated with Connexion DO NOT DELETE / by OCLC. 1st ed. Columbus, Ohio : OCLC, 1977. 200 pages : illustrations ; 30 x 30 cm. CatL:eng OCLC: 755511860, Holdings: 1
10	OCLC, A. M. E. (Author Main Entry), 1900- Uniform title. English CONTENTdm test record, title VM : used to produce test digital collection services integrated with Connexion DO NOT DELETE / by OCLC. 1st ed. Columbus, Ohio : OCLC, 1977. 200 pages : illustrations ; 30 x 30 cm. CatL:eng OCLC: 908932763, Holdings: 1
11	OCLC, A. M. E. (Author Main Entry), 1900- Uniform title. English CONTENTdm test record, title VM : used to produce test digital collection services integrated with Connexion DO NOT DELETE / by OCLC. 1st ed. Columbus, Ohio : OCLC, 1977. 200 pages : illustrations ; 30 x 30 cm. CatL:eng OCLC: 847969988, Holdings: 1
12	OCLC, A. M. E. (Author Main Entry), 1900- Uniform title. English CONTENTdm test record, title VM : used to produce test digital collection services integrated with Connexion DO NOT DELETE / by OCLC. 1st ed. Columbus, Ohio : OCLC, 1977. 200 pages : illustrations ; 30 x 30 cm. CatL:eng OCLC: 844959515, Holdings: 1
13	OCLC, A. M. E. (Author Main Entry), 1900- Uniform title. English CONTENTdm test record, title VM : used to produce test digital collection services integrated with

# BROWSE -- TITLE PHRASE

Results	Records
TEST REARING OF ANADROMOUS FISH LEMHI RIVER DRAINAGE IDAHO	2
TEST REARING OF ANADROMOUS FISH LEMHI RIVER DRAINAGE IDAHO (HAY...	1
TEST REARING OF SPRING CHINOOK SALMON	1
TEST REASSESS INNOVATE MOTIVATE COST	1
TEST REASSESS INNOVATIVE MOTIVATE COST	2
TEST REC IGEN BYLINE	1
TEST RECHERCHE DATE	1
TEST RECIPES	1
TEST RECIPES FOR DURKEES DIFFERENT DISHES	1
TEST RECIPES FROM MANY HOUSEHOLDS	1
TEST RECOGNITION USING ADAPTIVE SOFTWARE	1
TEST RECONFIGURATION FOR SERVICE ORIENTED APPLICATIONS	1
<b>TEST RECORD</b>	<b>36</b>
TEST RECORD (NONMARC FIELD)	1
TEST RECORD (SUMMON)	1
TEST RECORD (TIMBER DEVELOPMENT ASSOCIATION LONDRES)	1
TEST RECORD (TIMBER RESEARCH AND DEVELOPMENT ASSOCIATION)	3
TEST RECORD 1	3
TEST RECORD 1 CONNEXION WEB TO SIERRA + VPN	1
TEST RECORD 2	2
TEST RECORD 2 LAURIE DAVIDSON	1
TEST RECORD 2 TECHNICAL COLLEGE INSTRUCTORS PERCEPTIONS OF TH...	1
TEST RECORD 3	1
TEST RECORD 3 4	1
TEST RECORD 3 DYNAMICS	1

Browse WorldCat

Browse for:  
test record

in:  
Title Whole Phrase (tiw=)

Enter Diacritics...


OK Cancel Help

# BROWSE – AUTHOR NAME

Results	Records
WRIGHT, LARRY, ED	1
WRIGHT, LASLEY	1
WRIGHT, LATANYA	1
WRIGHT, LATANYA NICHOLE	1
WRIGHT, LATASHA P	2
WRIGHT, LATEISHA	1
WRIGHT, LATIFFANY D	1
WRIGHT, LATONIA DENISE	1
WRIGHT, LATONYA S	1
WRIGHT, LATOYA C	1
WRIGHT, LATRICE	1
WRIGHT, LAUDIE	1
<b>WRIGHT, LAURA</b>	<b>899</b>
WRIGHT, LAURA (1961 )	11
WRIGHT, LAURA (1970 )	6
WRIGHT, LAURA (BLOGUEUSE)	1
WRIGHT, LAURA (FOOD BLOGGER)	3
WRIGHT, LAURA (PH D )	1
WRIGHT, LAURA 19 LINGUISTE	2
WRIGHT, LAURA 19 ROMANCIERE	22
WRIGHT, LAURA 1907	1

Browse WorldCat

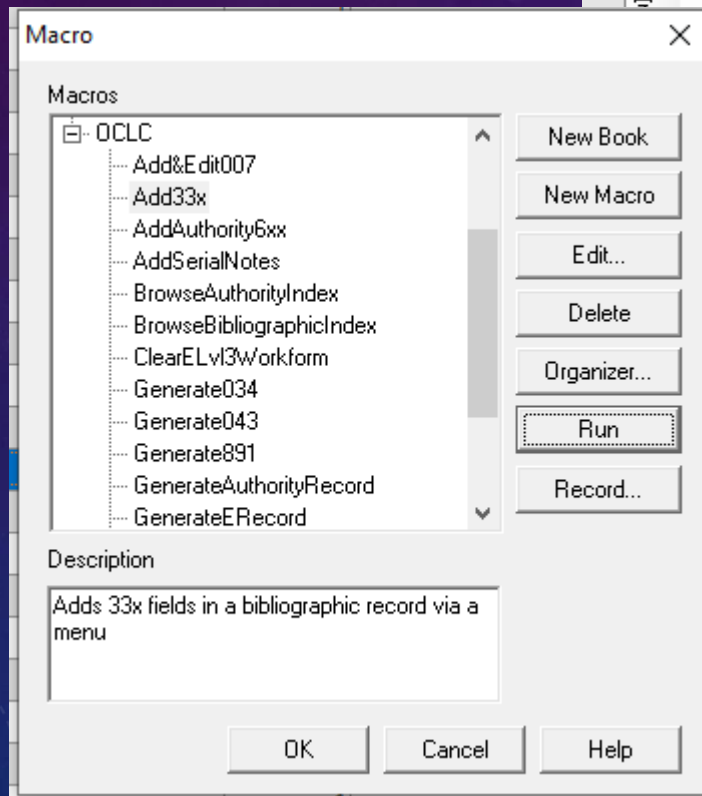
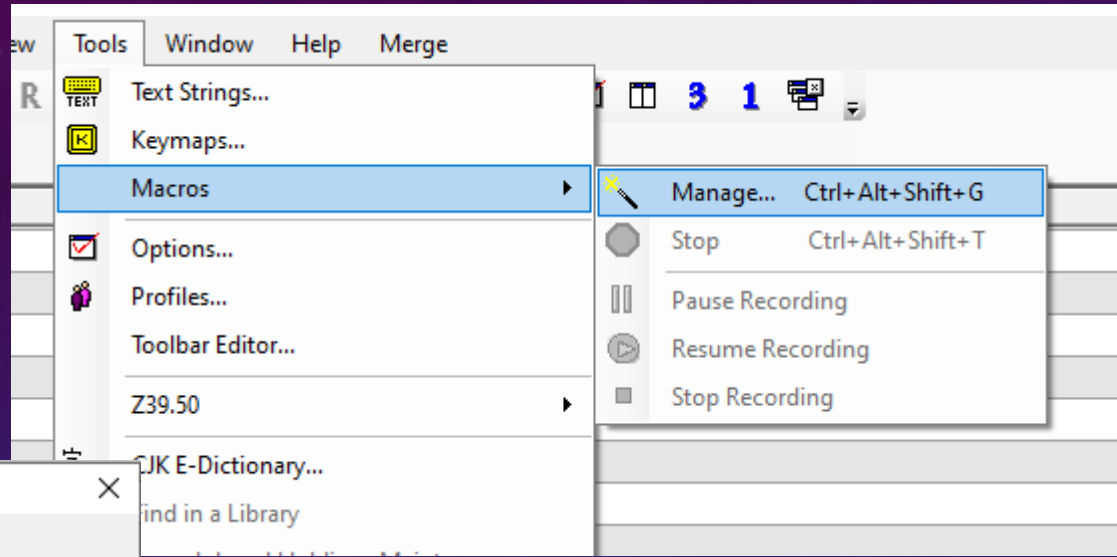
Browse for:  
wright, laura

in:  +  
Personal Name Whole Phrase (pnw=)

Enter Diacritics...

OK Cancel Help

# MACROS



Select "Run" (not OK) to invoke the macro



File Cataloging Authorities Edit Action Batch View Tools Window Help Merge

Client Help F1  
MARC Field Help Shift+F1  
Tutorial  
Contact Support...  
Useful Web Links  
License Agreement  
About OCLC Connexion Client...

Contents | Index | Search | Favorites

- Client Basics
  - Cataloging
    - OCLC Connexion cataloging basics
    - View your OCLC usage statistics
  - Search WorldCat
  - Create Bibliographic Records
  - Import Bibliographic Records
  - Edit Bibliographic Records
    - Edit bibliographic records
    - Reformat records
    - Validate records online or offline
    - Create or edit 006, 541, or 583 fields using guided entry
    - Check spelling in records
    - Maintain URLs in bibliographic records
    - Get a classification number for a record
    - Default keystrokes for navigating and editing records
    - Insert diacritics and special characters
    - Default keystroke shortcuts for diacritics and special character
  - Use Bibliographic Constant Data
  - Save Bibliographic Records
  - Take Actions on Bibliographic Records
  - Export Bibliographic Records
  - Print Labels and Accessions Lists
  - Use Bibliographic Institution Records
  - Use SCIPRO Records
- Authorities
- Batch Processing
- International Cataloging
- Glossary

### Introduction to the client interface for OCLC Connexion

- [OCLC Connexion](#)
- [Cataloging functions in both the Connexion client and browser interfaces](#)
- [Cataloging functions in the Connexion client only](#)

### OCLC Connexion

OCLC Connexion® is your cataloging access to the OCLC system. Connexion has two interfaces: this Microsoft® Windows-based software client ("the Connexion client") and the browser interface ("the Connexion browser").

- All of the topics in this Connexion client Help are also in [Connexion client system documentation](#) on the Connexion Web.
- See separate Help within the browser interface and separate [documentation for the browser interface](#).
- Both Connexion interfaces offer complete cataloging functions. Each also offers a [chart that compares interface functionality](#) between the client and browser.

For example, the client provides support for cataloging using the following non-Latin alphabets:

- Arabic
- Armenian
- Bengali
- Chinese
- Cyrillic
- Devanagari
- Ethiopic

Help is available in the client and online

# OCLC Client Documentation