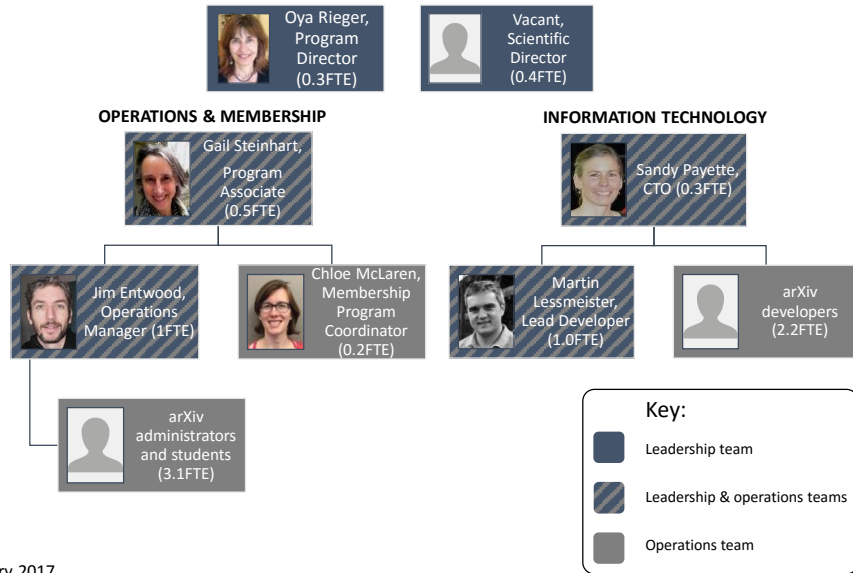


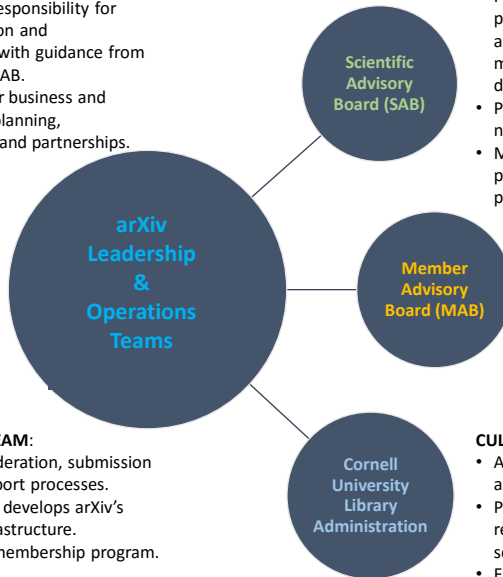
arXiv Organizational Model - Cornell University Library



arXiv: Roles & Responsibilities

LEADERSHIP TEAM:

- Bears overall responsibility for arXiv's operation and development, with guidance from the MAB and SAB.
- Responsible for business and sustainability planning, collaborations and partnerships.



OPERATIONS TEAM:

- Manages moderation, submission and user support processes.
- Operates and develops arXiv's technical infrastructure.
- Administers membership program.

SCIENTIFIC ADVISORY BOARD:

- Provides advice and guidance pertaining to intellectual oversight of arXiv, with particular focus on arXiv's moderation system and criteria for depositing content in arXiv.
- Proposes & reviews proposals for new subject domains.
- Makes recommendations and provides feedback on development projects.

MEMBER ADVISORY BOARD:

- Represents members' interests.
- Advises CUL on development, business planning, outreach and advocacy.

CUL ADMINISTRATION:

- Assumes overall responsibility for arXiv's obligations.
- Provides institutional support and resources for arXiv (HR, business services, legal, etc.).
- Final arbiter for arXiv decisions.

arXiv: Roles and Responsibilities

University Librarian, **Anne Kenney ***

- Resolve disputes between CUL, MAB, SAB as they relate to CUL's responsibilities
- Determine termination and need for transition strategy

Program Director (0.30 FTE) *

Oya Y. Rieger

- Oversee membership, business planning, & governance
- Lead fund raising efforts, including grant writing
- Participate in identifying technical requirements and setting development priorities
- Facilitate MAB and liaise to SAB

Scientific Director (0.40 FTE)

vacant

- Provide scientific oversight
- Participate in identifying technical requirements and setting development priorities
- Coordinate the development of associated policies with the SAB
- Facilitate SAB & liaise to MAB

Program Associate (0.3 FTE) **Gail Steinhart**

- Coordinate the next-gen arXiv initiative (arXiv-NG)
- Supervise Operations Manager and Library Membership Coordinator
- Advise on operations problems, help develop policy proposals, & prioritize operations team's work

CTO (0.3 FTE) **Sandy Payette**

- Provide strategic and managerial oversight for the arXiv IT projects and resources
- Lead the design and development of arXiv-NG
- Identify and assess technological partnership

arXiv Operations Manager (1 FTE) **Jim Entwood**

- Tech administration of submission process
- Support subject moderators
- Assist users and submitters
- Maintain help pages and document

STAFF: Andrea Salguero Cruz, Jake Weiskoff, Jessica Goldweber, student assistants

Library Membership (0.20 FTE) **Chloe McLaren**

- Manage arXiv membership program (invoices, institutional use, information about sustainability program)

IT Lead (1 FTE) **Martin Lessmeister**

- Operate arXiv's technical infrastructure
- Document & maintain arXiv code
- Partner with related initiatives and services to share tools and software

STAFF: Brian Caruso, Dave Fielding, Manolo Bevia (UI), Brandon Baker