

# arXiv Member Advisory Board Annual Meeting

October 2014



Cornell University  
Library

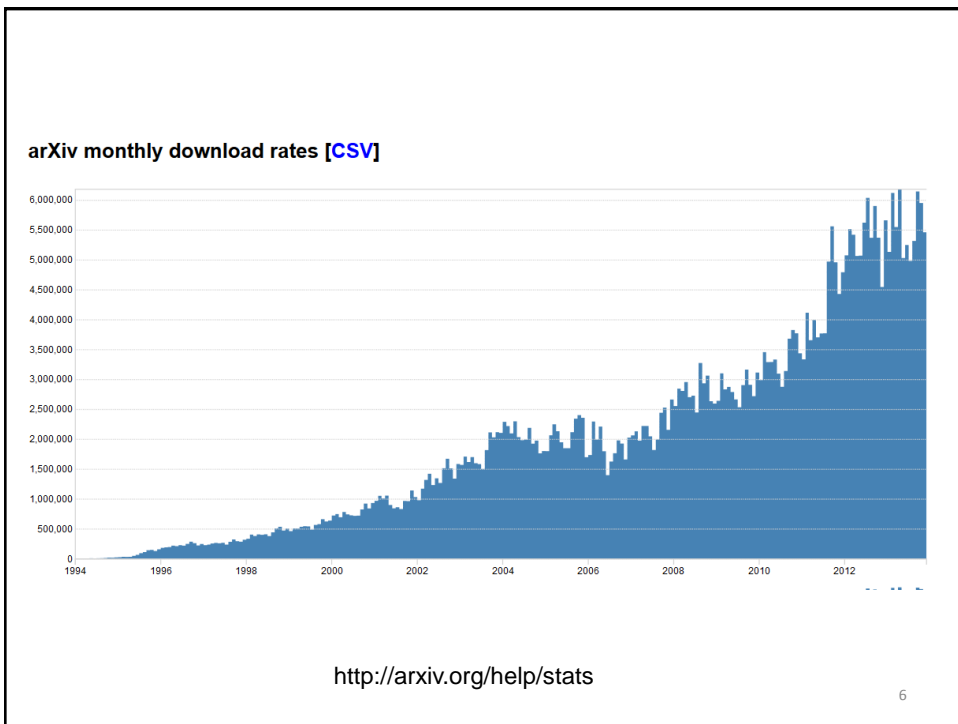
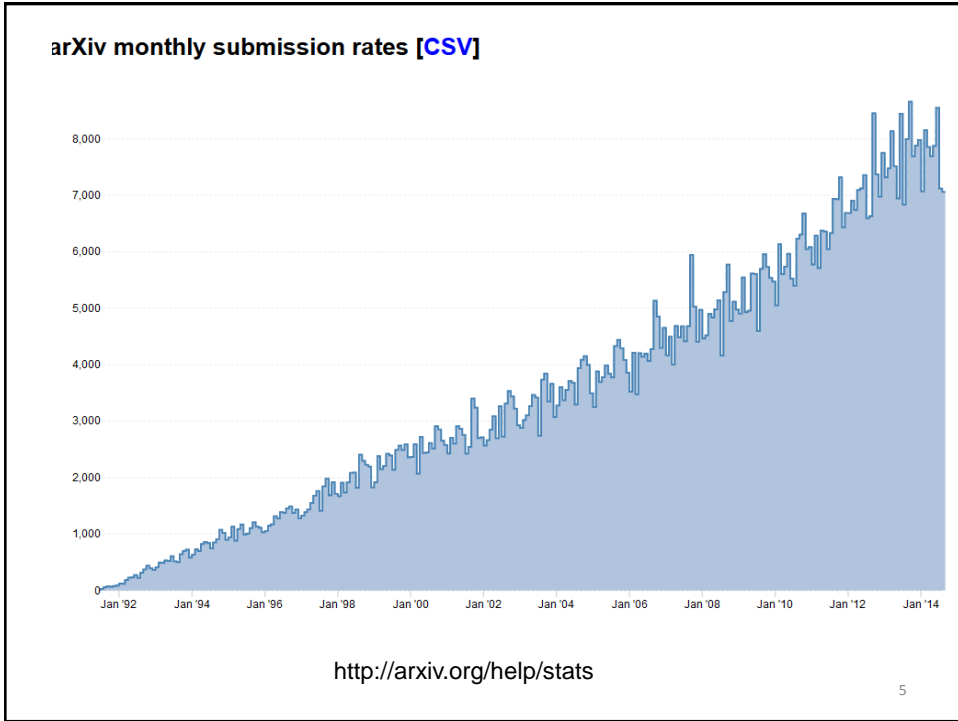
arXiv.org

## Goals: Morning

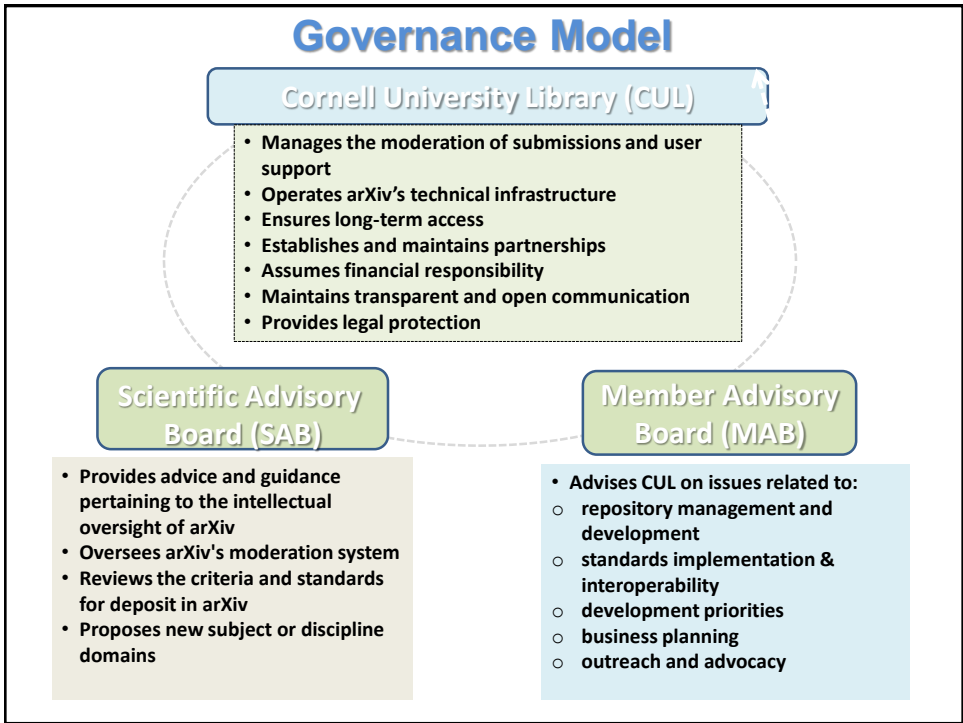
- introductions & arXiv overview
  - membership program
  - moderation/user support
  - SAB
- business overview
  - CY14/15 budgets
  - 'give button' pilot
  - research councils
  - beyond 5-year plan
- arXiv users' perspectives

2

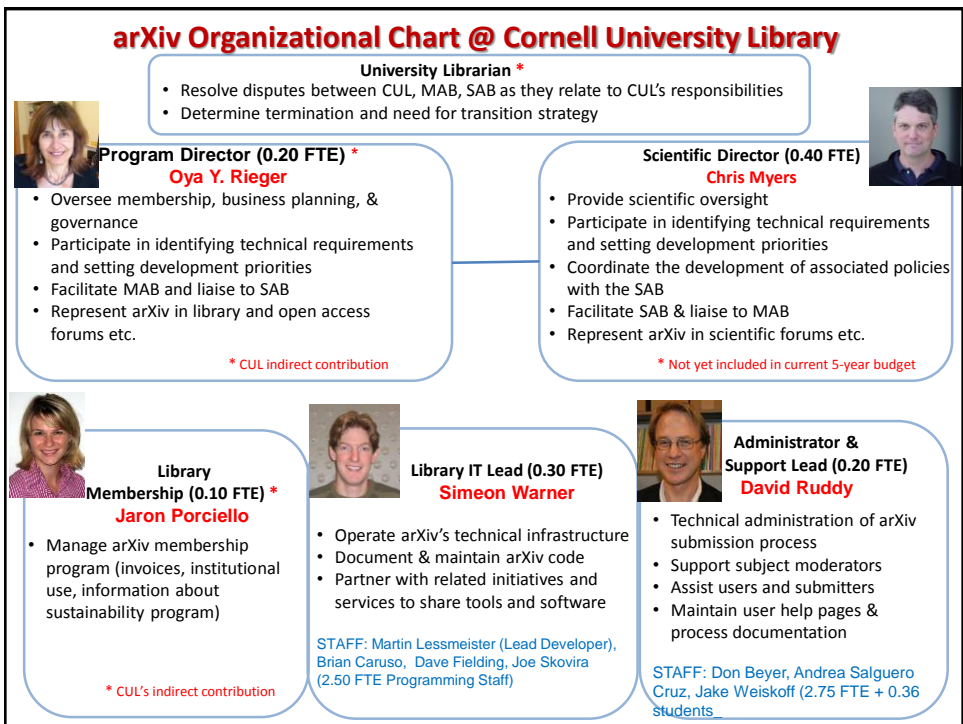


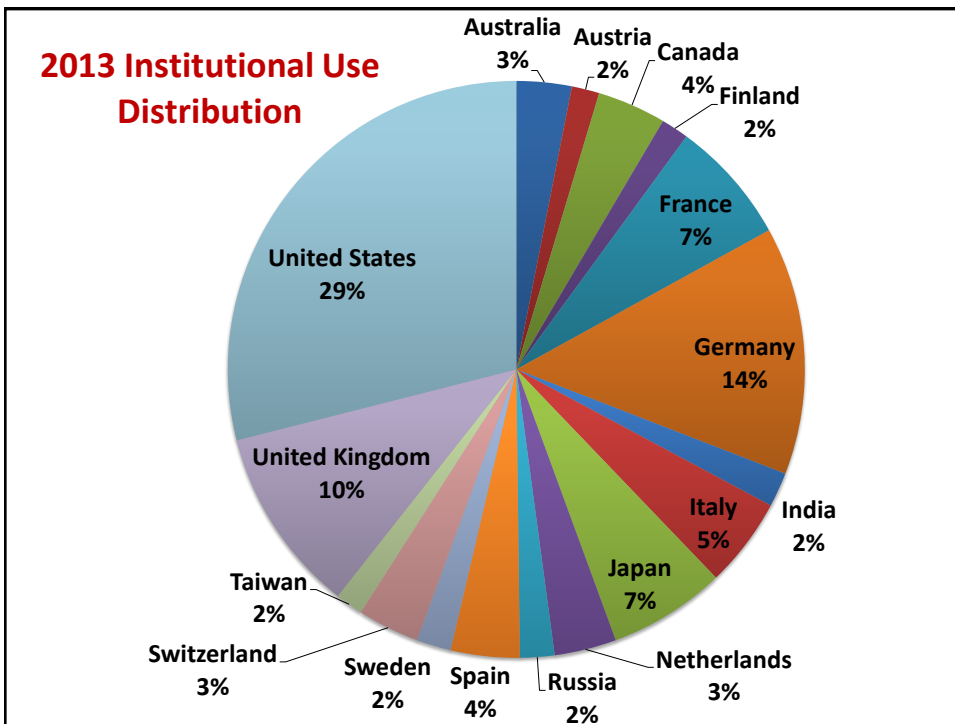
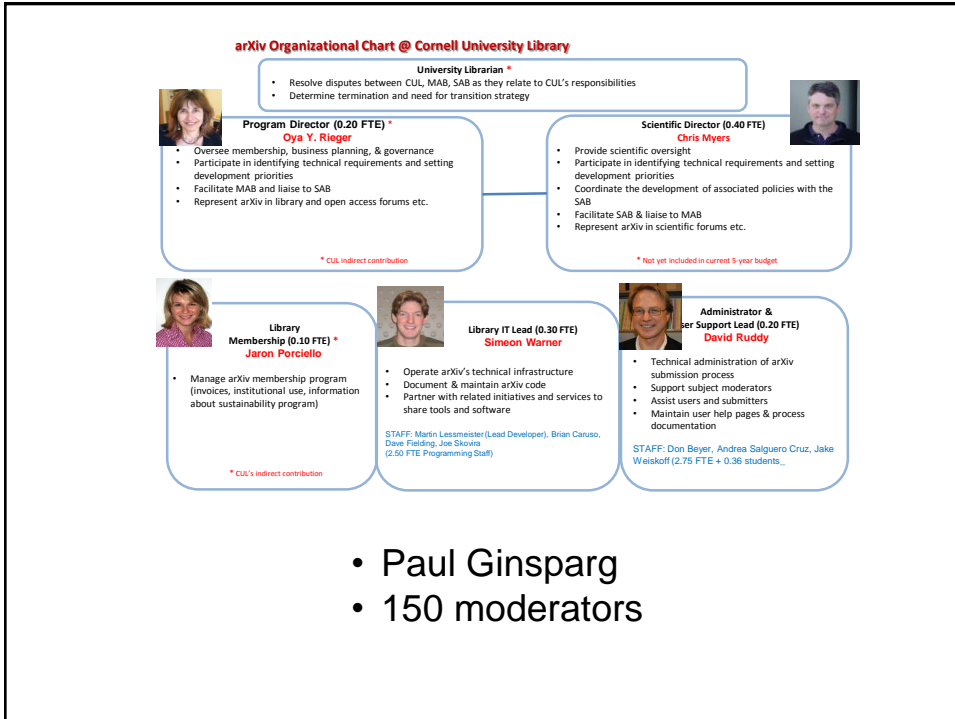


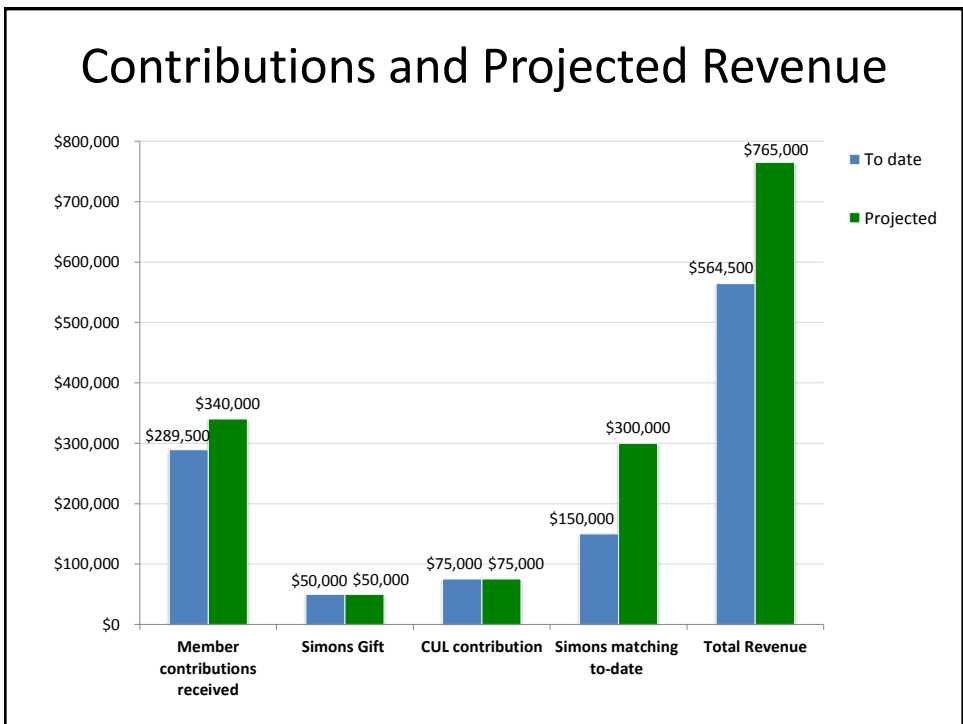
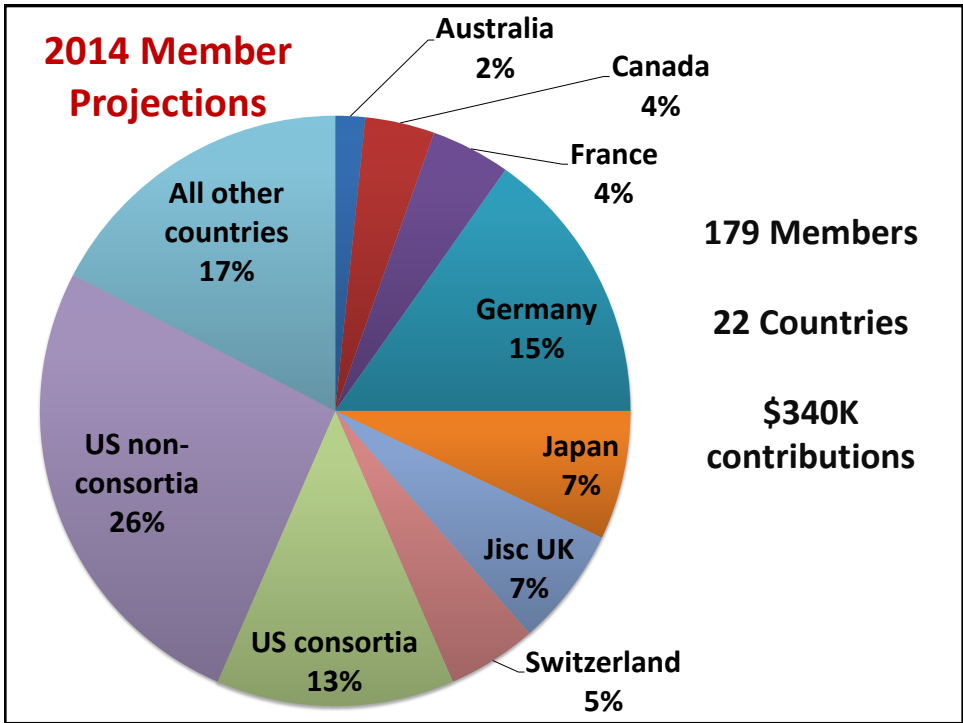
# Governance Model



## arXiv Organizational Chart @ Cornell University Library







## 2013 Annual Meeting

- Scientific Director
- Reserve policy
- 2013 and 2014 budgets
- Roadmap – prioritization (SAB engaged)
- MAB Subgroups:
  - Fund raising policies & strategies
  - Tier model and membership structure
- Sustainability vs Innovation

13

### Scientific Director (0.40 FTE)


**Chris Myers**

- Provide scientific oversight
- Participate in identifying technical requirements and setting development priorities
- Coordinate the development of associated policies with the SAB
- Facilitate SAB & liaison to MAB
- Represent arXiv in scientific forums etc.

10am-11:15 am

## business model overview

15



Cornell University  
Library

We gratefully acknowledge support from  
the Simons Foundation  
and Cornell University Library

arXiv.org > help Search or Article-id [\(Help\)](#) [Advanced search](#)

All papers

[Help Table of Contents](#) |

### arXiv Business Support and Governance Model

In January 2010, Cornell University Library (CUL) undertook a three-year planning effort to establish a long-term sustainable support model for arXiv, one that reduced arXiv's financial burden and dependence on a single institution and transitioned it to a collaboratively governed, community-supported resource. CUL identified institutions worldwide where the use of arXiv was most active and worked collaboratively with them to develop a membership and governance model based on voluntary institutional contributions. A formal long-term plan took effect in January 2013. In this new model, arXiv is supported by libraries and research laboratories worldwide that represent arXiv's heaviest users, as well as by CUL and generous matching funds from the Simons Foundation.

Please see the resources below for details about the arXiv support and governance model

#### General Information

- [arXiv Membership Program - FAQ](#)
- [Principles](#)
- [Organizational Structure](#)
- [Additional Information](#)

#### arXiv Governance and Business Model

- [Principles](#)
- [Scientific Advisory Board](#)
- [Member Advisory Board](#)
- [Business Model](#)
- For annual budgets, see [Additional Information](#)

#### arXiv Supporters and Users

- [arXiv Five-Year Member Pledges](#)
- [arXiv Planning Phase Supporters: 2010, 2011, 2012](#)
- [arXiv Institutional Usage Statistics: 2009, 2010, 2011, 2012, 2013](#)



## Business Model, 2013-2017

- Cornell University Library
  - \$75,000 per year in support of operational costs
  - in-kind contribution of all indirect costs (37%)
- Simons Foundation
  - \$50,000 per year
  - \$300,000 per year matching grant
- Member Institution
  - annual fees within \$1,500-3,000 range (based on usage ranking)

17

## Projected Expenses (2013-2017)

Description	2013	2014	2015	2016	2017
<b>Expense<sup>2</sup></b>					
<b>Staff</b>					
User support (staff)	228,405	236,400 <span style="color:red">▲</span>	244,680	295,453	305,795
User support (student)	8,581 <span style="color:red">▲</span>	8,500	9,192	9,514	9,847
Programming & system maintenance	238,669	164,685	170,453	176,415	182,588
Management & administration	61,835	64,000	66,240	68,558	70,958
<i>Subtotal Staff Costs</i>	537,490	473,585	490,565	549,939	569,187
<b>Other Direct Costs</b>					
Server costs <sup>3</sup>	41,700	43,160	44,670	46,235	47,855
Network bandwidth & telephony	1,550	1,605	1,660	1,720	1,720
Staff computers, software & supplies	1,865	1,930	2,000	2,070	2,140
Preservation services	-	-	-	-	-
Staff travel	8,280	8,570	8,870	9,180	9,500
Advisory group travel support	20,700	21,425	22,175	22,950	23,755
Consulting for business/governance					
<i>Subtotal Other Direct Costs</i>	74,095	76,690	79,375	82,155 <span style="color:green">▲</span>	84,970
<b>Total Direct Costs</b>	611,585	550,275	569,940	632,094 <span style="color:green">▲</span>	654,157
<b>Indirect Costs</b>					
Facilities <sup>4</sup>	67,274	60,530	62,693	69,530	71,957
Department administration & staff support <sup>5</sup>	159,012	143,072	148,184	164,344	170,081
<i>Subtotal Indirect Costs</i>	226,286	203,602	210,878	233,875 <span style="color:green">▲</span>	242,038
<b>Total Expenses</b>	<b>837,871</b>	<b>753,877 <span style="color:red">▲</span></b>	<b>780,817</b>	<b>865,969</b>	<b>896,195</b>

arXiv CY2014 MIDYEAR BUDGET		Projected Budget	Midpoint (July 2014)
<b>REVENUE</b>			
Member contributions		\$330,000	\$340,000
Simons Foundation Annual Commitment		\$50,000	\$50,000
Simons Foundation Matching Fund		\$300,000	\$300,000
Cornell University Library (Direct)		\$75,000	\$75,000
<b>TOTAL REVENUE</b>		<b>\$755,000</b>	<b>\$765,000</b>
<b>EXPENSES</b>			
Personnel (including benefits) <sup>1</sup>			
User support	2.65 FTE + 0.36 student		
Programming and system maintenance	2.5 FTE		
Scientific Director	.25-.40 FTE		
Management	0.52 FTE		
General Physics moderator	Contract, 5hr/wk		
	<i>Subtotal Personnel</i>	<b>\$549,000</b>	<b>\$576,000</b>
Non-Personnel			
Servers (physical & virtual), hardware maintenance, storage and backup		\$36,000	\$36,000
Network bandwidth and communication		\$8,706	\$8,706
Staff computers, software, supplies and misc. expenses		\$3,000	\$3,000
Advisory Board meetings (SAB and MAB) and staff conference travel		\$50,000	\$40,000
	<i>Subtotal Non-Personnel</i>	<b>\$97,706</b>	<b>\$87,706</b>
<b>TOTAL DIRECT EXPENSES</b>		<b>\$646,706</b>	<b>\$663,706</b>
Indirect and Volunteer Costs			
College and department administration, staff support (26% of direct costs) <sup>2</sup>		\$168,144	\$172,564
Facilities (11% of direct costs) <sup>3</sup>		\$71,138	\$73,008
arXiv moderation (130+ moderators, varying time commitments)		not tracked	
	<i>Subtotal Indirect Costs</i>	<b>\$239,281</b>	<b>\$245,571</b>
<b>TOTAL EXPENSES (direct + indirect)</b>		<b>\$885,987</b>	<b>\$909,277</b>

includes \$144,500 for SD and 1 FTE additional programmer ↑

arXiv CY2015 PROPOSED BUDGET		Projected Budget
<b>REVENUE</b>		
Member contributions		\$340,000
Simons Foundation Annual Commitment		\$50,000
Simons Foundation Matching Fund		\$300,000
Cornell University Library (Direct)		\$75,000
<b>TOTAL REVENUE</b>		<b>\$765,000</b>
<b>EXPENSES</b>		
Personnel (including benefits)		
User support	2.5 FTE + 0.36 student	
Programming and system maintenance	2.5 FTE	
Scientific Director	.40 FTE	
Management	0.52 FTE	
Gen-ph moderator	Contract, 5hr/wk	
	<i>Subtotal Personnel<sup>1</sup></i>	<b>\$653,000</b>
Non-Personnel		
Servers (physical & virtual), hardware maintenance, storage and backup		\$36,000
Network bandwidth and communication		\$8,706
Staff computers, software, supplies and misc. expenses		\$3,000
Advisory Board meetings (SAB and MAB) and staff conference travel		\$50,000
	<i>Subtotal Non-Personnel</i>	<b>\$97,706</b>
<b>TOTAL DIRECT EXPENSES</b>		<b>\$750,706</b>
Indirect and Volunteer Costs		
College and department administration, staff support (26% of direct costs) <sup>2</sup>		\$195,184
Facilities (11% of direct costs) <sup>3</sup>		\$82,578
arXiv moderation (130+ moderators, varying time commitments)		not tracked
	<i>Subtotal Indirect Costs</i>	<b>\$277,761</b>
<b>TOTAL EXPENSES (direct + indirect)</b>		<b>\$1,028,467</b>

includes 0.4 FTE SD + 1 FTE programmer (to be paid from Development Reserves) →

## Projected arXiv Staff FTE, 2013 – 2017

### Actual Staffing & Planned Changes

Position Description	2013	2014	2015	2016	2017
User support (staff) + 0.36 student assistant	3.0 2.65	3.0 2.75	3.0 2.5	3.5 2.5	3.5 2.5
Programming & system maintenance	2.25 2.1	1.5 2.5	1.5 2.5	1.5 2.5	1.5 2.5
Management & administration	0.5	0.5	0.5	0.5	0.5
Scientific director	--	0.4 (partial year)	0.4	0.4	0.4

\* CY2015-2017 staffing configuration to be reviewed

## Reserves

### 2010-2017=\$1,063,000

#### 1. Operating Reserves

- support the service’s transition to another institution
- provide a safety net when there is a revenue short-fall
- accumulate \$300,000 by the end of 5-year plan (2017)

#### 2. Development Reserves

- support special projects
- Scientific Director + 1 FTE programmer
  - CY14-17 Costs=\$744,000

$$\$1,063,000 - (\$300,000 + \$744,000) = \$19,000$$

22

Description	ACTUAL					PROJECTED		
	2010	2011	2012	2013	2014	2015	2016	2017
Operating Costs (Direct Costs)	\$312,000	\$435,000	\$509,000	\$503,000	\$520,000	\$569,000	\$631,000	\$653,000
					+ \$144,500	+\$200,000	+\$200,000	+\$200,000
Revenue	\$383,000	\$470,000	\$511,000	\$770,000	\$765,000	\$765,000	\$765,000	\$765,000

↓  
0.4 SD and 1 FTE  
additional  
programmer costs

23

## MAB Tier Model & Membership Structure Subgroup

- **Group Members:** Tim Klassen, Tommy Ohlsson, Esther Tobschall, Jaron Porciello, Oya Rieger (coordinator)
- **Subgroup Goal:** Assess and revise our tier model to consider other classes of member categories such as scientific societies
- **Outcomes:** (to be implemented during the next 5-year plan)
  - Don't add a 5<sup>th</sup> tier (for users 200 and below)
  - Add research councils to our campaign

## MAB Fund Raising Policies and Strategies Subgroup

- **Group Members:** Catriona Cannon, Eva Isaksson, Philip Kent, Jaron Porciello, Oya Rieger (coordinator)
- **Subgroup Goal:** Discuss strategies to bring in additional income including collaborations with publishers and societies, adding a Give button to arXiv, and other possible revenue sources.
- **Outcomes:**
  - Proposal to run a Give pilot to test the concept

25

The screenshot shows the homepage of the Legal Information Institute (LII). At the top, it features the Cornell University Law School logo and a search bar. The main header includes the LII logo and a 'Support Us!' button. Below the header is a navigation menu with links for 'ABOUT LII', 'GET THE LAW', 'LAWYER DIRECTORY', 'GET LEGAL FORMS', 'LEGAL ENCYCLOPEDIA', and 'HELP OUT'. There are also social media icons for 'Follow' and 'Like'. The main content area is divided into three columns. The left column, titled 'WELCOME TO LII', describes the organization's mission and lists key activities: publishing law online, creating materials to help people understand law, and exploring new technologies. The middle column, titled 'WHAT'S NEW?', lists recent legal news items such as Supreme Court summaries, employer health coverage, union agency fees, protest zones, cell phone searches, and carbon emissions. The right column features an advertisement for TIAA GREF, highlighting award-winning performance and a 'Learn More' button. Below the main content area is a 'LEGAL RESOURCES' section with links to federal law, state law resources, and Wex legal encyclopedia. At the bottom right, there is a 'STAY INVOLVED' section with links to the LII Announce Blog, LII Supreme Court Bulletin, and options to make a donation, contribute content, become a sponsor, or give feedback.

Cornell University Law School Search Cornell

**Legal Information Institute** [LII] SUPPORT LII GIVE NOW Search all of LII... Go

ABOUT LII / GET THE LAW / FIND A LAWYER / LEGAL ENCYCLOPEDIA / HELP OUT Follow 12.4K followers Like 40

Our free legal information service is not costless. Your donations make it possible for the LII to make law available and understandable to people around the world. You can watch [a short video that explains what we do and why we do it.](#)

*All gifts are tax-deductible. We do not furnish personal information to others under any circumstances.*

**\$50** provides FREE legal information to **1,000** people

Move the slider above to change your gift amount, or enter the amount in the box below.

Other amount \$

Repeat monthly

**Donate \$50**

[secure site, no need to create account]

iPad 6:30 AM pkp.sfu.ca

Inbox - Outlook Web App, light version Untitled Open Journal Systems | Public Knowledge

Dear friends: we are the small, international team behind the Public Knowledge Project's software. We are about 12 to 20 people, depending on funded projects, responsible for maintaining and improving OJS, OMP, and OCS. In 2012, over 5000 journals published at least 10 articles using OJS, reaching nearly 200,000 articles in that year alone. We estimate that there are over 1.5 million articles published in OJS journals. All of our software is open source and we will never charge for its download and use. All of our community support, including the online help forums, documentation, and instructional videos are free for everyone. We mostly rely on donations, sponsorships, and research grants. We want to ask you to make sure that we can continue to improve our software and sustain your publishing activities. **If our software and support are useful to you, then please take a minute to keep them free and continually improving.** Thank you.

\$5  
  \$10  
  \$20  
  \$50  
 Other \$

[Donate with PayPal](#)

# PKP

PUBLIC KNOWLEDGE PROJECT

Software ▾   Research ▾   Partners ▾   Support ▾

*PKP is a multi-university initiative developing (free) open source software and conducting research to improve the quality and reach of scholarly publishing.*

Public Knowledge Project > Open Journal Systems

## Open Journal Systems

"Scholars need the means to launch a new generation of journals committed to open access, and to help existing journals that elect to make the transition to open access..."  
*Budapest Open Access Initiative, 2002*



## Making your gift to Cornell

### Your gift

Gift amount:

Designation:

Other designation or special instructions:

500 characters remaining.

This gift is:  In honor of  In memory of  Neither

Gift type:



+ Add

## arXiv – user perspectives

- Is arXiv meeting scientists' needs as readers and submitters?
- Any features that arXiv is not providing and needed by scientists?
- Are there any other online databases or repositories that scientists prefer to arXiv?
- What do you see as graduate students' up-and-coming needs?
- Opinions on arXiv's quality parameters

31