

# LUNA migration

by Mira Basara

02/22/2016

# LUNA – limitations we are happy to lose

- Behind current trends
- Complexity of application support
- Difficulty to synchronize Oracle database in LUNA with source data for large dynamic collections
  - Pictor database for large slide collection ([slide 8](#))
  - TMS for Museum collection ([slide 9](#))
- Building new collections
- No bulk data replacement
- 2-3 years ago LUNA stopped supporting Oracle; now uses MySQL

# LUNA – advantages we also lose

- Annotations
- Groups and Presentations
- PDF Book Reader
- Greater compatibility with various browsers
- More granular permissions (per user or per collection)
- Mobile device support
- Vendor support

# Destination – ARTstor/Shared Shelf

- 2005 ARTstor added to CUL repository landscape
- Hosted platform
- Large community with cross collections search
- 2009 CUL began development partnership with ARTstor [Shared Shelf](#).
- Building new collections, management, and cataloging are very easy
- Publishing options ([slide 11](#))

# Migration plan (completed 1/2016)

- Outreach to stakeholders and community (VRWG)
- Resource migration
  - Herbert F. Johnson Museum of Art collection in [eMuseum](#)
  - Collecting master files for SS upload
  - Retrieve derivatives from LUNA server for missing master files
- Metadata migration (very difficult)
  - Many different metadata schemas
  - No bulk export
  - XML export from LUNA not useful
  - Transforming VRA relational database to flat ([slide 12](#))
  - XLSX normalization for Shared Shelf upload ([slide 13](#))
- Updating websites, libguides, resolvers, handles

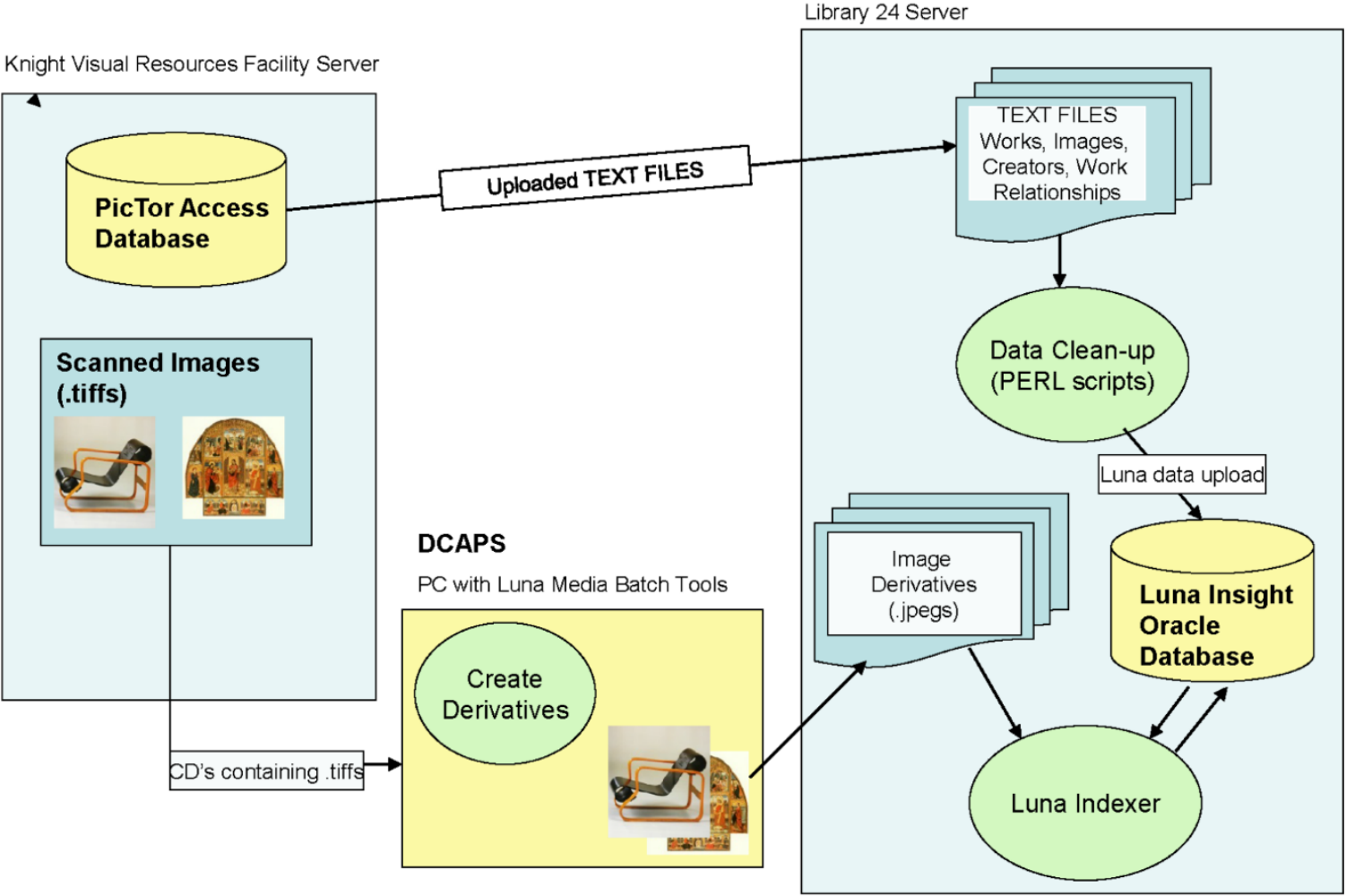
# LUNA migration - phase 2 (underway)

- Shut down Luna test server (done)
- Create subgroups with key people that will QC migrated LUNA collections
- Preservation of original metadata for future reference
- Documentation – Finding Aids
- Goal: the end of Spring 2016 to decommission Luna production server

# Questions? Comments?

(slides from this point are supplementary material)

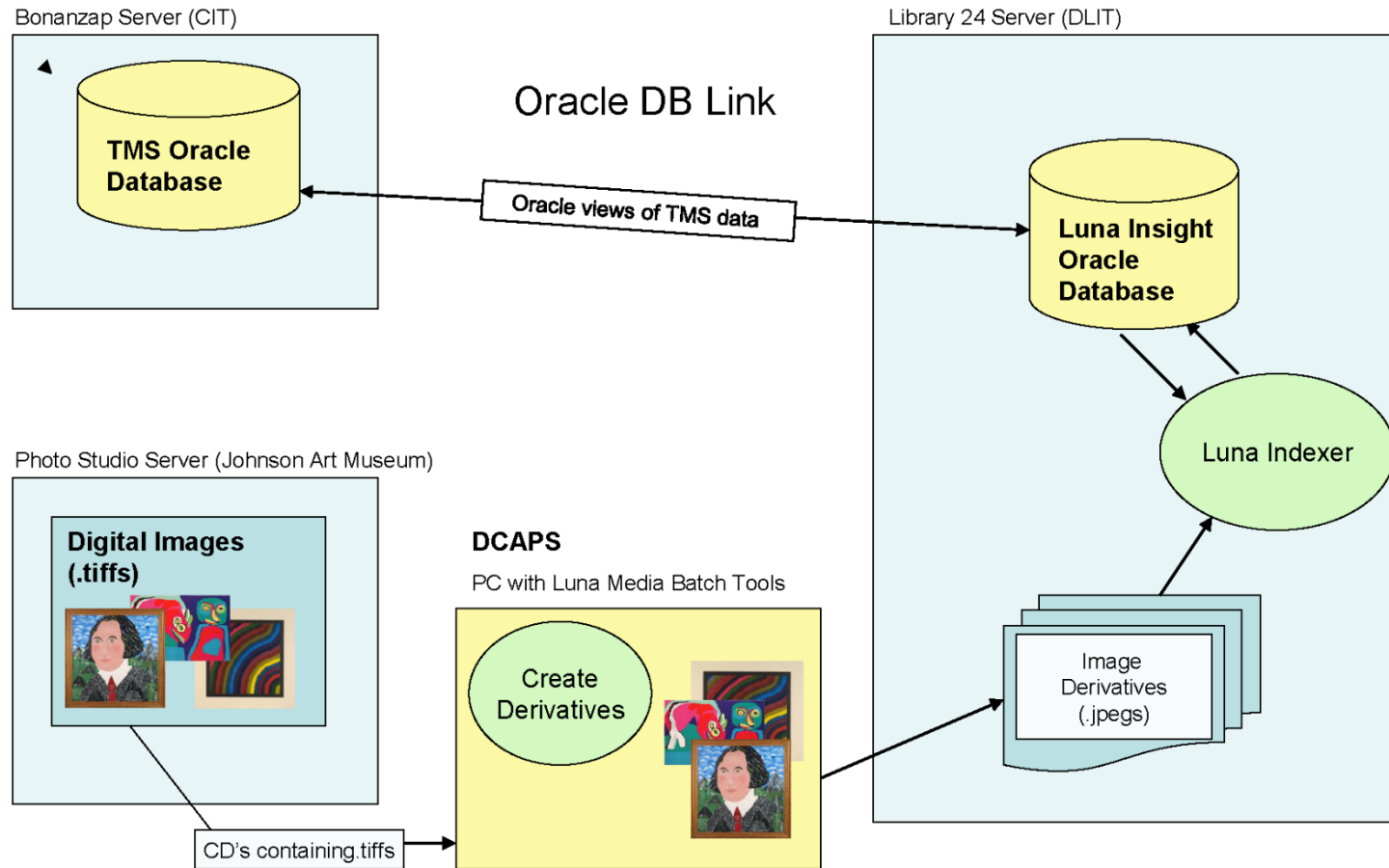
# KVRF/Luna interface



Slide borrowed from Gale Halpern presentation, (2007), <https://ecommons.cornell.edu/handle/1813/8420>



# The Museum System(TMS)/Luna interface



# Metadata preview in Luna client/Inscribe

Data Editor - Object

Search View Selection View Editor View **Table View** Record Preferences

Page 1 of 35

Accession Number	Title	Notes	Bio/Origin	Birth Date	Creator	Death Date	Gender	Nationality	Role	Date	Date Qualifier	Earliest
15/5/3090.00614	Bonfils Album No. 1	This album was apparently compiled by E. A. Filmer of Ithaca, New York, in 1902.								ca. 1902	Album date	1865
15/5/3090.00615	Bonfils Album No. 2	This album was apparently compiled by E. A. Filmer of Ithaca, New York, in 1902.								ca. 1902	Album date	1865
15/5/3090.00616	Bonfils Album No. 3	This album was apparently compiled by E. A. Filmer of Ithaca, New York, in 1902.								ca. 1902	Album date	1865
15/5/3090.01564	Album of Views of Sc...									ca. 1870-c...	Portfolio date	1870
15/5/3090.01565	Album of Architectural...									ca. 1870-c...	Portfolio date	1870
15/5/3090.00264	Firenze, Campanile d...				Philpot, J...		N		Photo...	ca. 1850-c...	Photograph date	1850
15/5/3090.00266	Firenze, Baptistry Ce...		Italian, 137...	1378	Ghiberti, 1455		M	Italian	Sculp...	1424	Building Date	1424
15/5/3090.01597	Sage College, Cornel...		1829-1913	1829								
15/5/3090.00715	Kronborg Castle, Hel...	"Kronborg Castle, the Elsinore Castle of Shakespeare's Hamlet, was built in Helsi...										
15/5/3090.00001	Herald Square, New ...	Building date from Monograph of McKim, Mead & White, Vol. I. Building based on t...	French, 18...	1851								
15/5/3090.00002	Portico of the Church ...		Italian, 144...	1441								

Data Editor - Object

Search View Selection View Editor View Table View Record Preferences

Record 7 of 1720

- Diameter: [ ]
- Diameter: [ ]
- Height: 26.9875
- Height: 10.625
- Measurement: Image: 10 5/8 x 8 3/8 in.; 26.9875 x 21.2725 cm
- Metric Unit: cm
- Unit: in
- Width: 8.375
- Width: 21.2725
- Subjects: New Testament
- Subjects: Relief sculptures
- Subjects: Religious buildings
- Subjects: Doors
- Subjects: Entrances

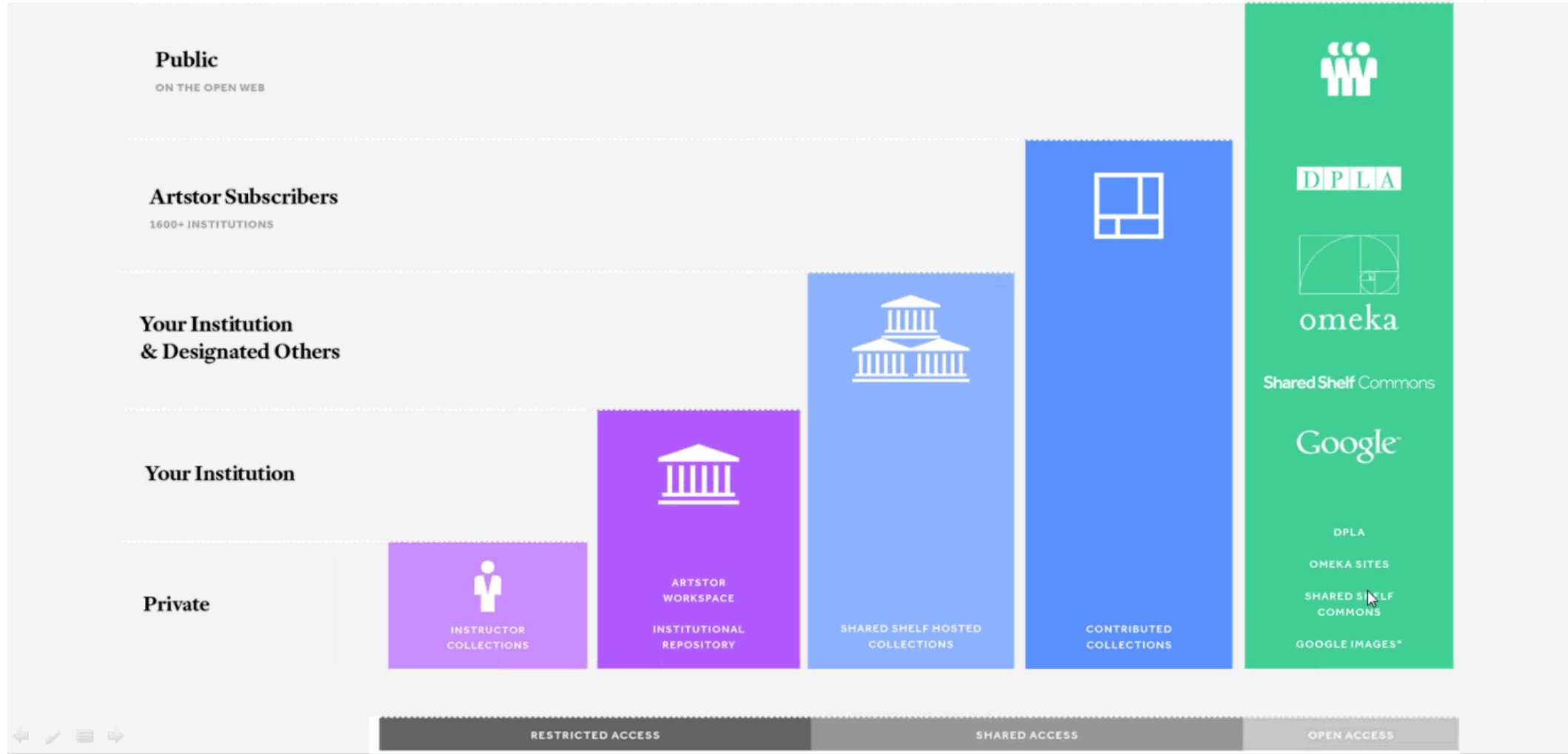
Media 1 of 1

Media ID: 10190001  
Media Filename: 10190001

no media available

New Delete Save Restore

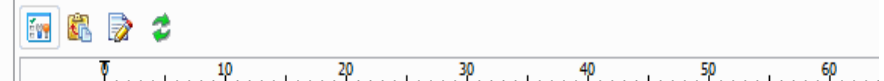
# Control How Broadly You Share Your Content



Navigation and tool icons for the schema browser interface.

VRWORKTITLE: Created: 2/26/2013 10:57:35 AM Last DDL: 2/26/2013 10:57:37 AM  
Primary Key: WORK\_RECORD\_KEY, WORK\_TITLE\_KEY

Columns Indexes Constraints Triggers Data Script Grants Synonyms Partitions Subpartitions Stats



```
1 ALTER TABLE INDARC.VRWORKTITLE
2 DROP PRIMARY KEY CASCADE;
3
4 DROP TABLE INDARC.VRWORKTITLE CASCADE CONSTRAINTS;
5
6 CREATE TABLE INDARC.VRWORKTITLE
7 (
8   WORK_RECORD_KEY          INTEGER          NOT NULL,
9   WORK_TITLE_KEY          INTEGER          NOT NULL,
10  WORK_TITLE_TYPE         VARCHAR2(40 BYTE) NOT NULL,
11  WORK_TITLE              VARCHAR2(255 BYTE) NOT NULL,
12  WORK_TITLE_PREF        VARCHAR2(40 BYTE),
13  WORK_TITLE_LANG        VARCHAR2(40 BYTE),
14  WORK_TITLE_SOURCE      VARCHAR2(255 BYTE),
15  WORK_TITLE_VOCAB      VARCHAR2(40 BYTE),
16  WORK_TITLE_VOCABID    VARCHAR2(40 BYTE)
17 )
18 TABLESPACE INSIGHT
19 RESULT_CACHE (MODE DEFAULT)
20 PCTUSED          0
21 PCTFREE         10
22 INITRANS        1
23 MAXTRANS        255
24 STORAGE (
25   INITIAL          5M
26   NEXT             1M
27   MINEXTENTS      1
28   MAXEXTENTS      UNLIMITED
29   PCTINCREASE     0
30   BUFFER_POOL     DEFAULT
31   FLASH_CACHE     DEFAULT
32   CELL_FLASH_CACHE DEFAULT
33 )
34 LOGGING
35 NOCOMPRESS
36 NOCACHE
37 NOPARALLEL
38 MONITORING;
39
40
41 CREATE UNIQUE INDEX INDARC.VRWORKTITLE_PK ON INDARC.VRWORKTITLE
42 (WORK_RECORD_KEY, WORK_TITLE_KEY)
43 LOGGING
44 TABLESPACE INSIGHT
```

Table structure view for the VRWORKTITLE table, listing columns and their data types.

Column Name	Data Type
VRWORK	
VRWORKAGENTATTRIBUTE	
VRWORKAGENTNAME	
VRWORKAGENTNATIONALITY	
VRWORKAGENTROLE	
VRWORKAGENTVITALDATES	
VRWORKCULTURE	
VRWORKCULTUREXREF	
VRWORKDATE	
VRWORKDESCRIPTION	
VRWORKIMAGECOLLECTION	
VRWORKLOCATION_ID	
VRWORKLOCATIONNAME	
VRWORKMATERIAL	
VRWORKMATERIALXREF	
VRWORKMEASUREMENTS	
VRWORKOBJECTTYPE	
VRWORKOBJECTTYPEXREF	
VRWORKREFERENCE	
VRWORKREFERENCE_ID	
VRWORKRELATION	
VRWORKRELATIONXREF	
VRWORKRIGHTS	
VRWORKRIGHTSXREF	
VRWORKSOURCE	
VRWORKSOURCEID	
VRWORKSTYLEPERIOD	
VRWORKSTYLEPERIODXREF	
VRWORKSUBJECT	
VRWORKSUBJECTXREF	
VRWORKTECHNIQUE	
VRWORKTECHNIQUEXREF	
VRWORKTITLE	

