

Chart #1: What am I Cataloging?
Compilations vs. Collaborations Decision Tree

It's a **Compilation** if:

- It contains multiple works
- Preferred source indicates who created what
- Table of contents, preface, program notes, home page indicates who created what
- Components in resource indicate who created what
- Presence of a compiler or editor/ compiler
- Knowledge that the creators could not have possibly have collaborated (e.g. they lived in different times)

Is it a "pile" of things stuck together (like a big stone cairn)?

If 1 creator:
see chart #2
&
6.2.2.10.3

If >1 creator:
see chart #3
&
6.27.1.4

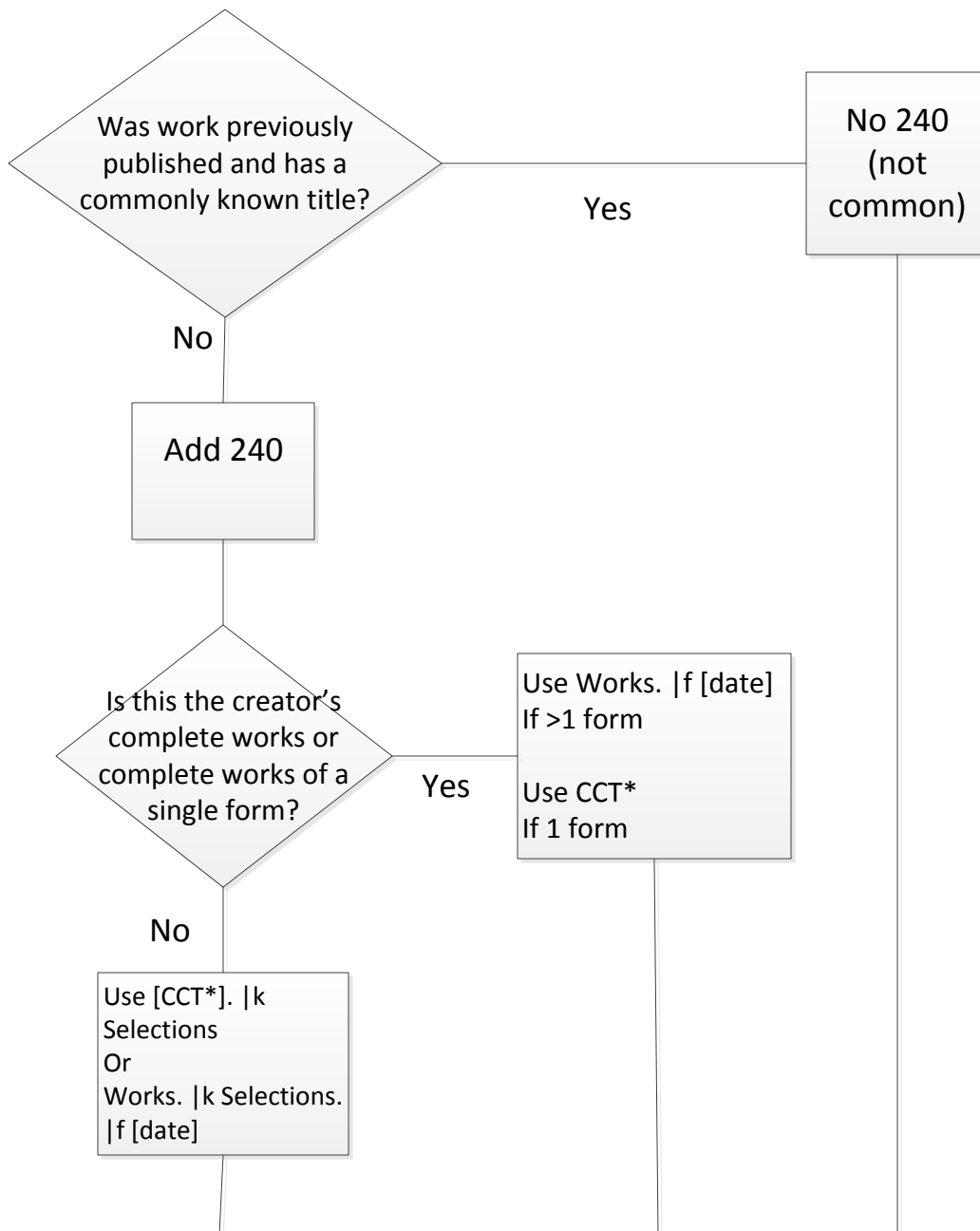
It's a **Collaboration** if:

- Nothing says who created what
- If in doubt

Is it several people working together (like monks making a sand mandala)?

See chart #4
&
27.1.4

Chart #2: Compilation, 1 Creator



- Add 1xx for Creator (See 19.a.1.1 if corporate body)
- Add 505 if not burdensome (cataloger's judgement) or contents not mentioned in 245
- Add 7xx analytic for predominate or 1st work when it represents a substantial part of the resource. (Exceptions: anthology of poetry, conference proceedings hymnals, journals, interviews, etc.). See 25.1 LCPS
- If no collective title, add 7xx analytic for first or predominant work. See 6.2.2.10.3 LCPS

*CCT = Conventional Collective Titles (See 6.2.2.10.2). Examples:

Correspondence	Poems	Plays
Essays	Posters	Short stories
Novels	Prose works	Speeches

Chart #3: Compilation, >1 creator

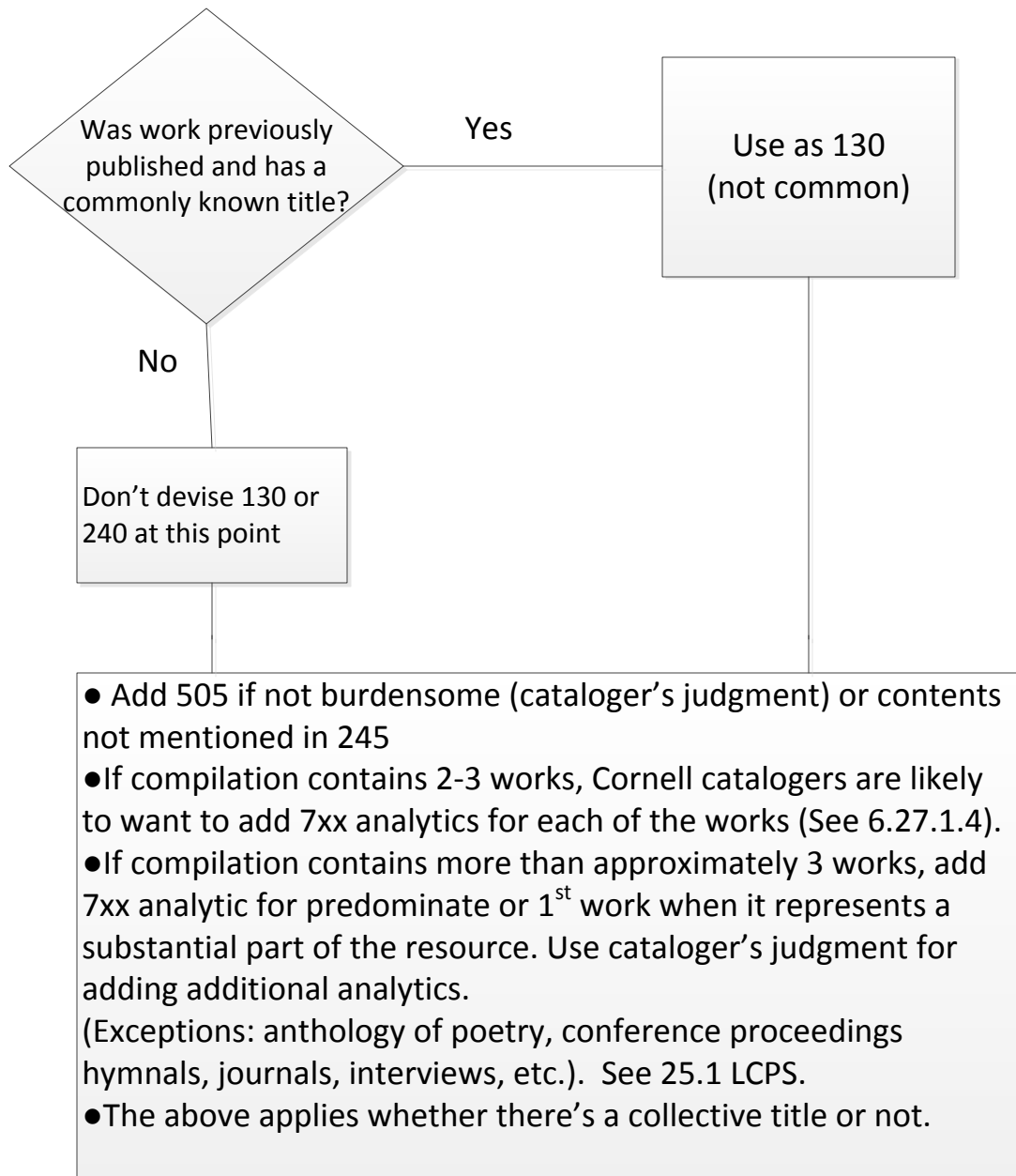


Chart #4: Collaboration

- Create 1xx for 1st named creator in 245 |c. Can be author, photographer, artist, etc. (See Appendix I.2 for terms)

If a person, see 6.27.1.3

If a corporate body, see 19.2.1.1.1

Exceptions: moving image resources (named by preferred title), some resources having both corporate bodies and persons as responsible entities, and nearly all serials.

- Create 7xx for other creators in 245 |c.

LC's policy is to use cataloger's judgement on this.

Based on: the Library of Congress' modules for the RDA Refresher Training at LC
Modules B & C, developed by Judith A. Kuhagen and Dave Reser.