



Cornell Now: the Campaign for Cornell Engineering

- ❖ What is the Cornell Now Campaign?
- ❖ How will the College of Engineering benefit from its participation in this campaign?
- ❖ What are the College of Engineering's financial goals?
- ❖ What role is the Engineering College Council being asked to play?

What is Cornell Now ?

- An expansion of Cornell's fundraising campaign through 2015
- A commitment to ensuring adequate funding in support of the priorities outlined in the University's Sesquicentennial strategic plan
- An effort to raise an additional \$1.4B for Cornell by 2015
- An opportunity for each College to seek support for its most pressing priorities
 - College of Engineering Goal: \$185M

CORNELL ENGINEERING

Cornell Now: the College of Engineering in 2015

FACULTY

- Additional funds for 25+ faculty lines including funds to help attract and recruit URMs and women of the highest quality
- Fund at least 4 of the additional faculty lines necessary to create an undergraduate major in BME
- Provide increased capacity in energy research

PROGRAMS

- Underwrite the Student Teams program and other Experiential Learning Initiatives

CORNELL ENGINEERING

Cornell Now: the College of Engineering in 2015

STUDENT AID

- Cut our graduate fellowship gap by nearly half
- Improve access for undergraduates through enhanced scholarship opportunities

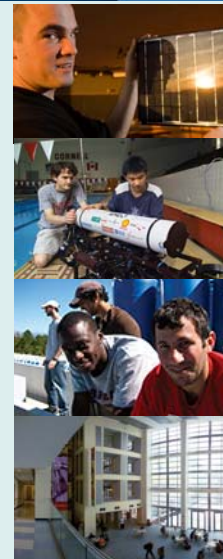
INFRASTRUCTURE

- Provide the necessary facilities and upgrades to support the new BME undergraduate major
- Complete the funding needed for the Physical Sciences Building

CORNELL ENGINEERING

College of Engineering Campaign Priorities

❖ Named BME department	\$35M
❖ Graduate Fellowships	\$30M
❖ UG Scholarships	\$11.75M
❖ Experiential and Entrepreneurial Learning	\$10M
❖ Faculty Lines	\$9M
❖ Faculty Renewal	\$7.5M
❖ Energy & Sustainable Development	\$9M
❖ Faculty Diversity	\$1M
❖ Physical Sciences Bldg	\$1.25M



CORNELL ENGINEERING

Cornell Now: Cornell Engineering Fundraising Goals & FY12 Outlook

Campaign Goals

- CoE Campaign Goal*: \$185M
 - \$23.9M raised to date
- FY12 Annual Goal: \$33M
 - \$2.0M raised to date
- Faculty Renewal Goal: \$7.5M
 - \$4.2M raised to date

FY12 Outlook

- In Process: \$7.8M
- Declined: \$6.625M
- Deferred: \$750K
- *Remaining: \$95M*

*Campaign timeline July 1, 2010 – December 31, 2015

CORNELL ENGINEERING

Cornell Now: Developing Future Leaders at the College of Engineering

Engineering Leadership Program

- Formal leadership curriculum open to all Engineering undergraduate students
- Funds to hire new Director of Engineering Leadership
- Students can obtain a certificate in leadership
- Curriculum modules include:
 - Project management
 - Group dynamics
 - Communication skills
 - Personal inventory of skills
 - Building inclusive teams/organizations
 - Creating & implementing a vision – seeing the big picture
 - Understanding the economic, social and political environment



CORNELL ENGINEERING

Cornell Now: Enhancing Faculty Recruiting in the College of Engineering



Andreea Minca –

- Assistant Professor, ORIE
- BS & MS, Applied Mathematics, l'Ecole Polytechnique, 2007
- PhD, Mathematics, Pierre et Marie Curie University, 2011

*Research interests:
Resilience of financial
networks to contagion*

CORNELL ENGINEERING

Cornell Now: Enhancing Faculty Recruiting in the College of Engineering



Greg Fuchs –

- Assistant Professor, AEP
- BS, Physics & Chemistry, Univ. Wisconsin-Madison, 1996
- M.S., Applied Physics, Cornell University 2003
- PhD, Applied Physics, Cornell University, 2007

*Research interests: Solid
state systems*

CORNELL ENGINEERING

The Engineering College Council and Cornell Now

- ❖ Major Gifts Committee
 - Enhance efforts of AA&D by helping to identify, engage, solicit and thank donors
- ❖ 100% annual giving participation
- ❖ Make a campaign gift in support of a campaign priority
- ❖ Participate in future ECC funding initiatives

CORNELL ENGINEERING

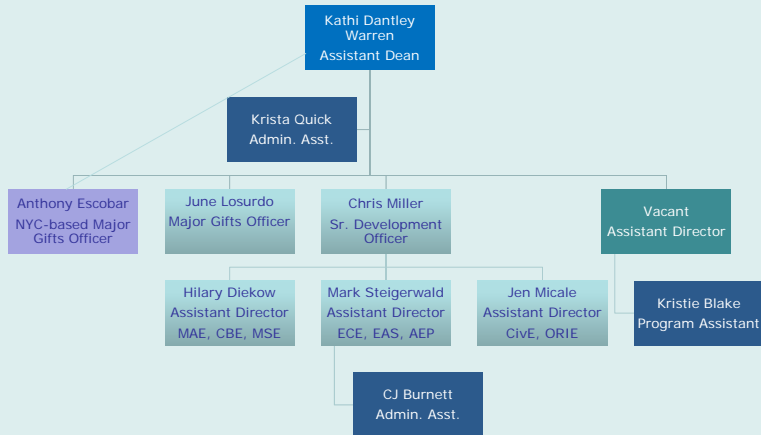
Cornell Engineering Major Gifts Committee

- Current Members
 - Duane Stiller, chair
 - Sarah Fischell
 - Sam Fleming*
 - Dan Simpkins
 - Roger Strauch*
- Seeking additional committee members from within ECC and newly recruited members

**indicates membership on the University MGC*

CORNELL ENGINEERING

Engineering-Alumni Affairs & Development Staff



CORNELL ENGINEERING

Questions?

CORNELL ENGINEERING