

# arXiv 2016 Organizational Chart @ Cornell University Library, September 2016

## University Librarian, **Anne Kenney** \*

- Resolve disputes between CUL, MAB, SAB as they relate to CUL's responsibilities
- Determine termination and need for transition strategy

## Program Director (0.30 FTE) \*

**Oya Y. Rieger**

- Oversee membership, business planning, & governance
- Participate in identifying technical requirements and setting development priorities
- Facilitate MAB and liaise to SAB

\* CUL indirect contribution

## Scientific Director (0.40 FTE)

**vacant**

- Provide scientific oversight
- Participate in identifying technical requirements and setting development priorities
- Coordinate the development of associated policies with the SAB
- Facilitate SAB & liaise to MAB

## CTO (0.3 FTE) **Sandy Payette**

- Provide strategic and managerial oversight for the arXiv IT projects and resources
- Lead the design and development of the next-generation arXiv
- Identify and assess partnership, technologies, and funding opportunities

## Library Membership (0.20 FTE) \*

**Chloe McLaren**

- Manage arXiv membership program (invoices, institutional use, information about sustainability program)

\* CUL indirect contribution

## IT Lead (1 FTE) **Martin Lessmeister**

- Operate arXiv's technical infrastructure
- Document & maintain arXiv code
- Partner with related initiatives and services to share tools and software

STAFF: Brian Caruso, Dave Fielding, Manolo Bevia (UI), Brandon Baker

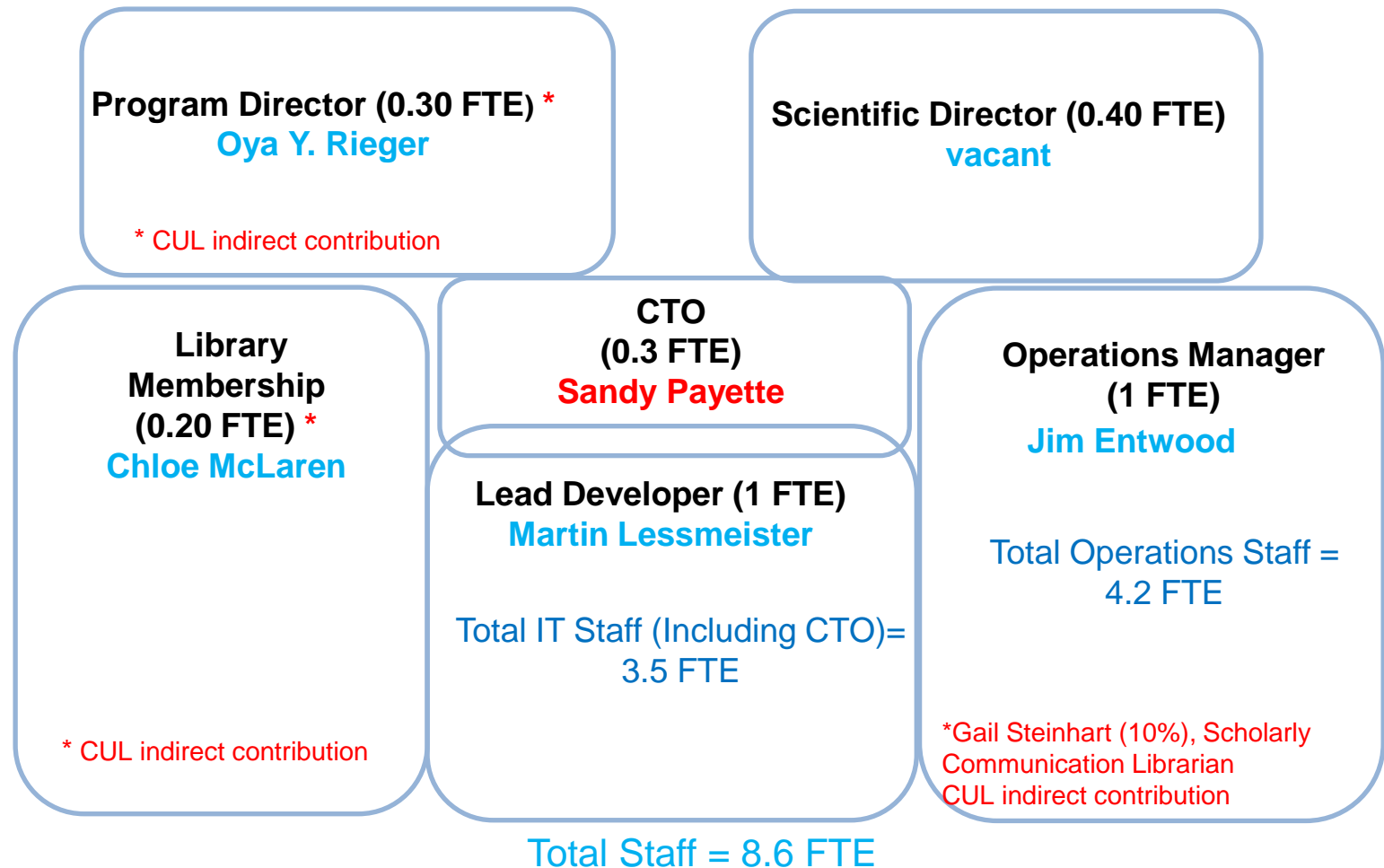
## arXiv Operations Manager (1 FTE) **Jim Entwood**

- Tech administration of submission process
- Support subject moderators
- Assist users and submitters
- Maintain help pages and document

STAFF: Andrea Salguero Cruz, Jake Weiskoff, Jessica Goldweber, st. assistants

Plus Gail Steinhart (10%) as CUL indirect contribution

# arXiv Organizational Chart @ Cornell University Library



Additional Contributors: Paul Ginsparg  
& ~150 moderators

Plus indirect-related staffing, e.g., HR, Accounting

# Governance Model

## Cornell University Library (CUL)

- **Manages the moderation of submissions and user support**
- **Operates arXiv's technical infrastructure**
- **Ensures long-term access**
- **Establishes and maintains partnerships**
- **Assumes financial responsibility**
- **Maintains transparent and open communication**
- **Provides legal protection**

## Scientific Advisory Board (SAB)

- **Provides advice and guidance pertaining to the intellectual oversight of arXiv**
- **Oversees arXiv's moderation system**
- **Reviews the criteria and standards for deposit in arXiv**
- **Proposes new subject or discipline domains**

## Member Advisory Board (MAB)

- **Advises CUL on issues related to:**
  - **repository management and development**
  - **standards implementation & interoperability**
  - **development priorities**
  - **business planning**
  - **outreach and advocacy**