

## Associate Dean for Research



Rajit Manohar  
Associate Professor,  
ECE

Degrees received in Computer Science:

BS Caltech 1994

MS Caltech 1995

PhD Caltech 1998

- Joined Cornell faculty in 1998
- Co-Founded Computer Systems Laboratory
- Awarded Ruth and Joel Spira Outstanding Teaching Award in ECE 2009

CORNELL ENGINEERING

## Assistant Dean for AAD



- Kathi Warren
- Joined Cornell June 1, 2010
- Previously at Robert H. Smith School of Business at U. Maryland
- Rebuilding the AAD office

CORNELL ENGINEERING

## New Faculty

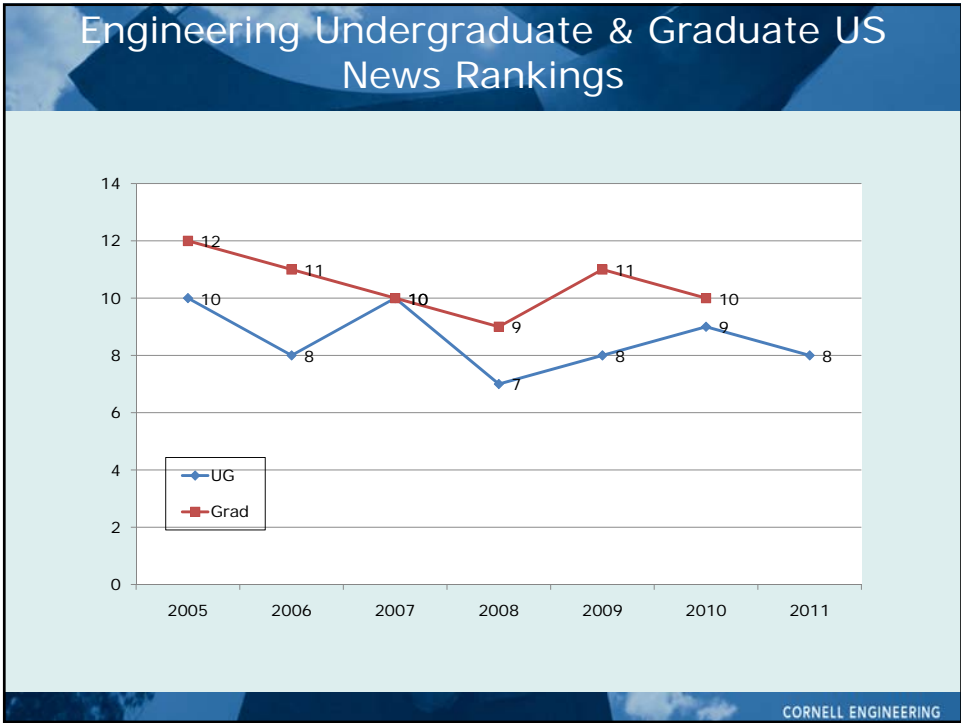


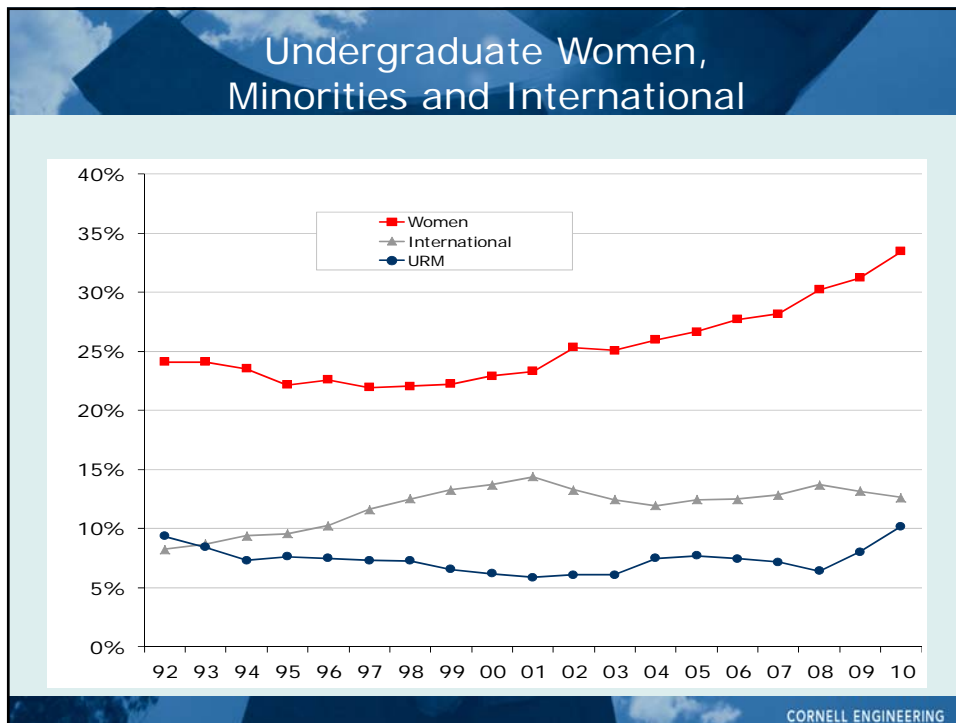
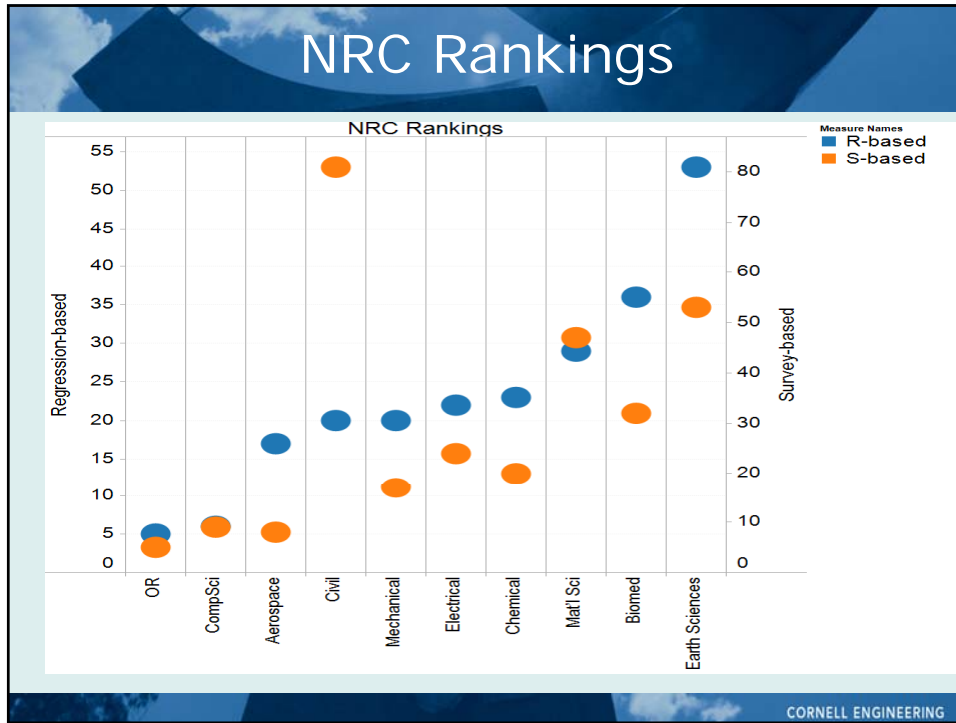
**Christopher Hernandez**  
Assistant Professor, MAE

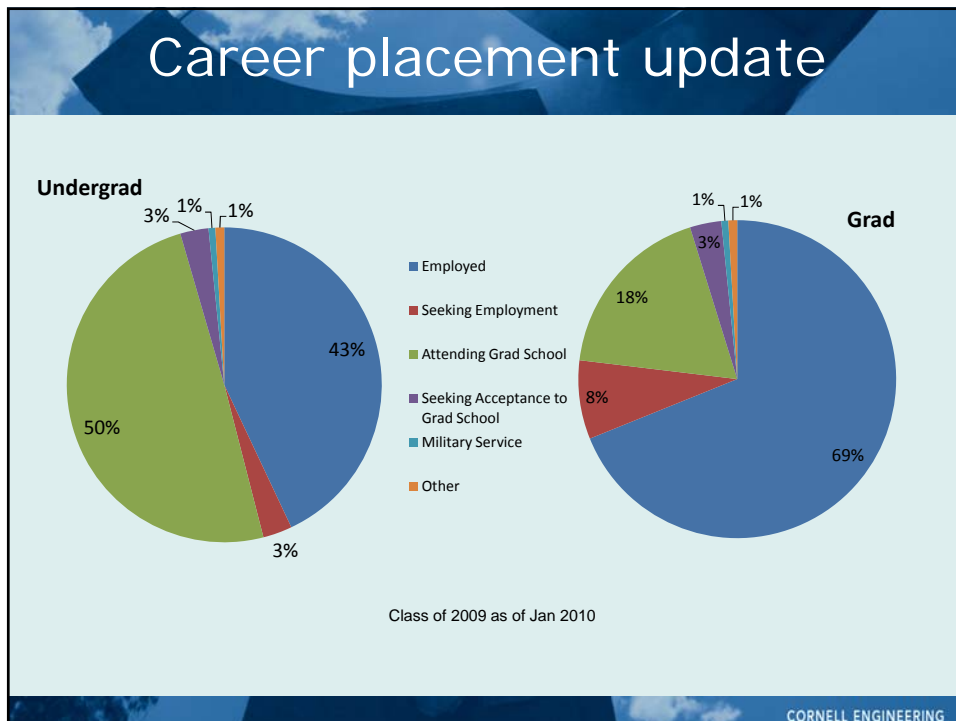
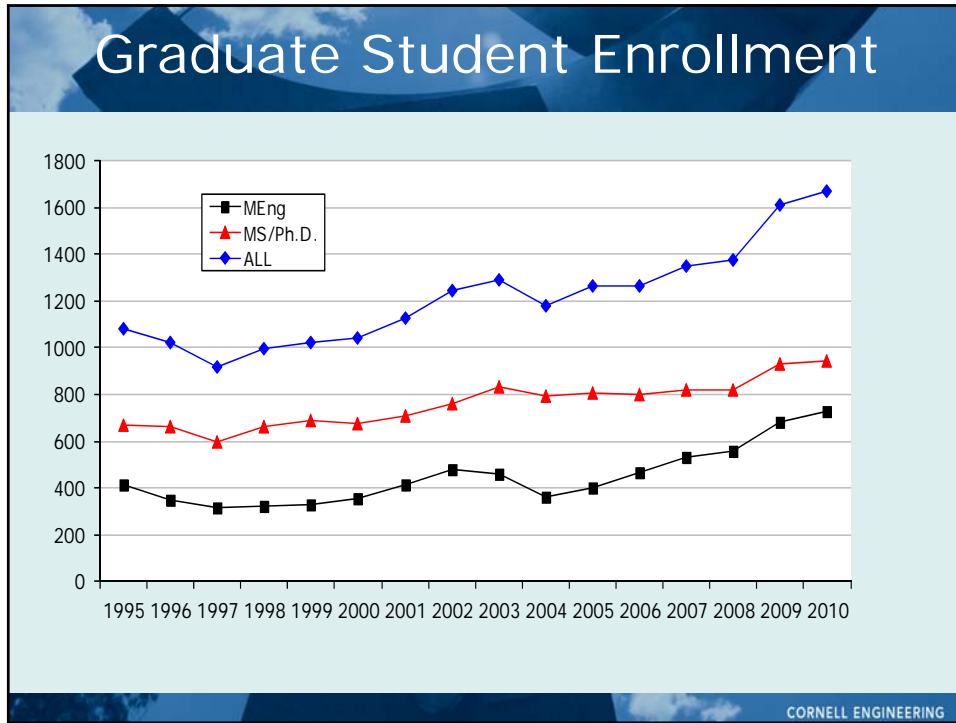


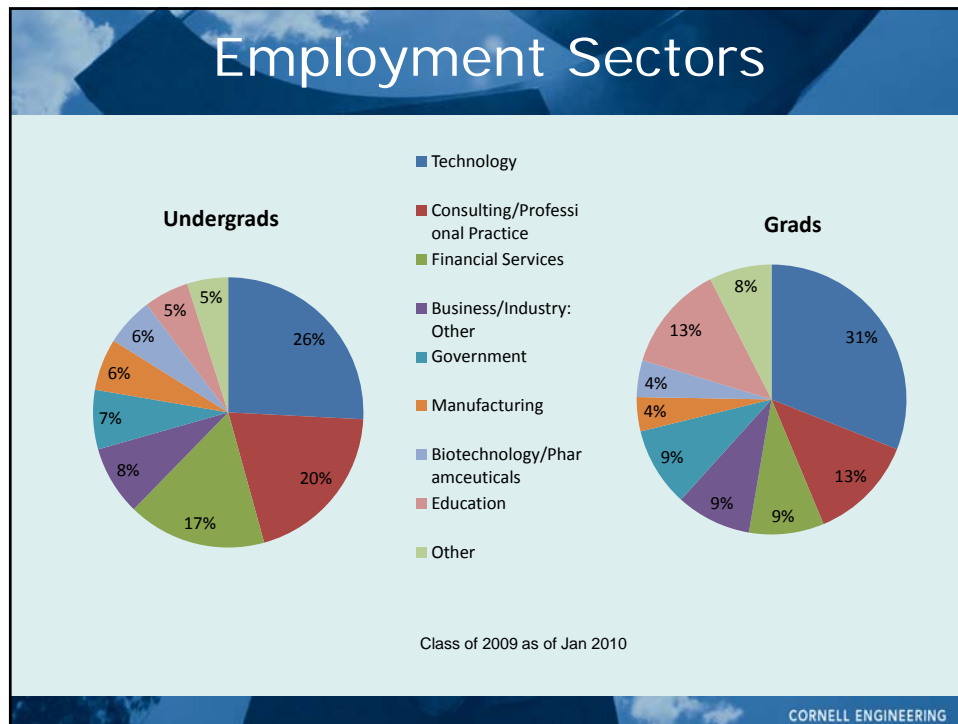
**Christopher Batten,**  
Assistant Professor, ECE

CORNELL ENGINEERING









- ## A sampling of accomplishments since last meeting...
- Cornell Autonomous Underwater Vehicle wins 1<sup>st</sup> place for second year
  - Robot sets walking world record
  - 3 young faculty win NSF Early Career Awards
  - Michael Lipson (ECE) wins MacArthur "Genius Award"
  - David Skorton elected to the National Academies Institute of Medicine
- CORNELL ENGINEERING

## Budget strategy

- Two years of reduction thus far
- Overall ongoing cuts in COE approx. \$7M (~9%)
- First year across the board reductions
- Second year more strategic – partnership with CIS
  - Financial transactions shared services
  - HR shared services
  - Facilities zone management
  - IT service groups

CORNELL ENGINEERING

## Engineering Library Update

- Libraries changing dramatically
  - 99% online
  - 14% of collection circulated in last 5 years
- Collection will be relocated by summer 2011
- Now planning
  - Access to reference librarians
  - Use of space

CORNELL ENGINEERING

## Facilities update

- Current projects
  - PSB/Clark almost complete
  - Olin renovation complete
  - Snee Institute complete
- Facilities Master plan on hold
  - Focus on renovations and maintenance
- Undergoing space plan to inform next 5-10 years
  - Most efficient use of space
  - Necessary renovations

CORNELL ENGINEERING

## Student experience

- Working with students
  - Sessions on taking care of yourself and others
  - New “Friend-to-Friend” video vignette – well received
  - Planning student experience survey
- Continuing to work with faculty on minimizing stress where appropriate
  - Continuing “Notice and Respond”

CORNELL ENGINEERING

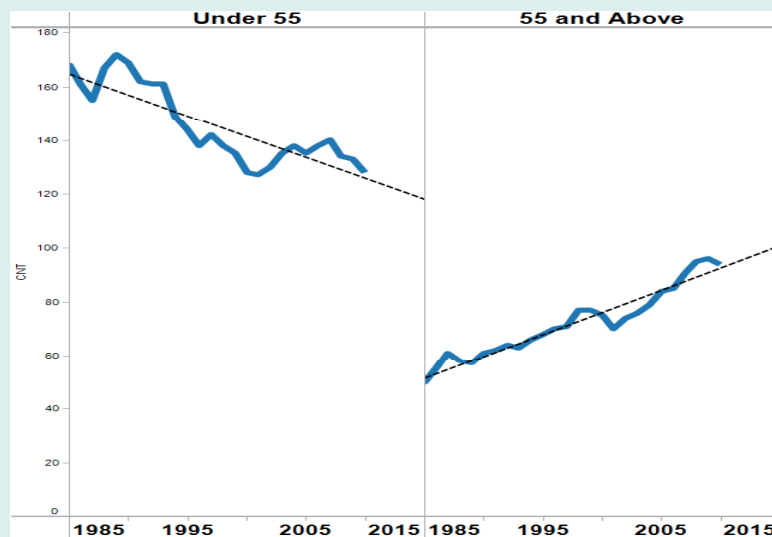


## Critical Challenges

- Faculty age, attrition and slow hiring
  - Faculty/student ratio degrading
  - Key research areas unfilled
  - Reduced competitiveness for grants
- Insufficient graduate student support
- Facilities
- Critical lack of quality space
  - 2,687 nsf/faculty vs. benchmark 3,396
  - 856 research nsf/faculty vs. benchmark 1,305

CORNELL ENGINEERING

## Faculty Renewal Critical



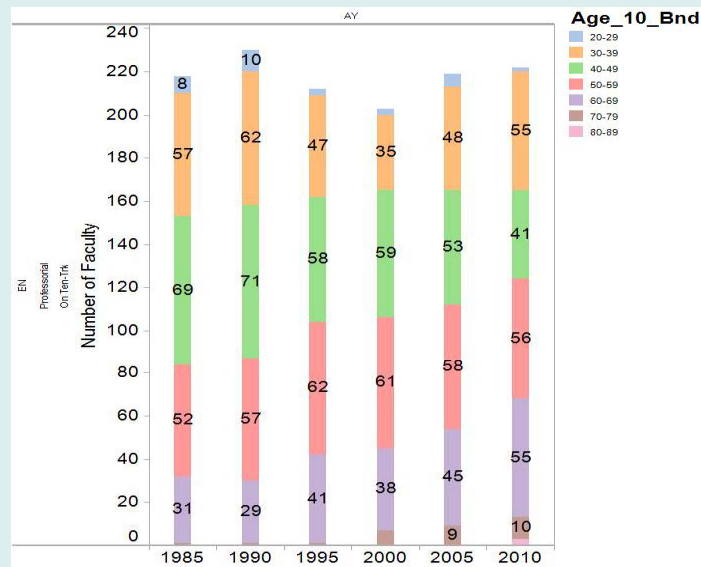
CORNELL ENGINEERING

# Faculty age demographics



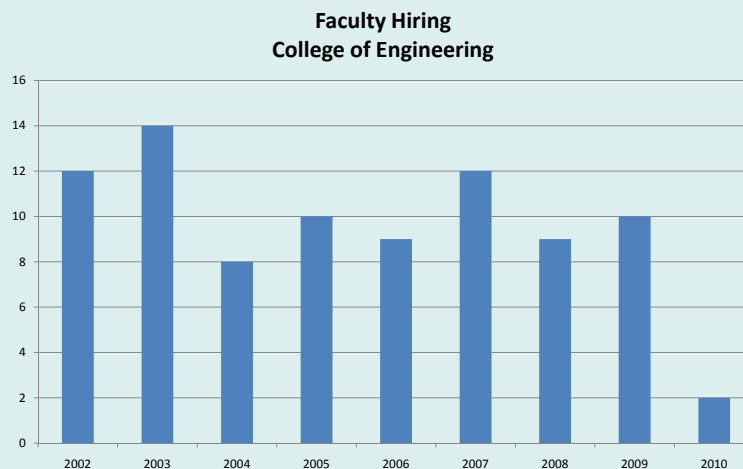
CORNELL ENGINEERING

# Faculty age demographics



CORNELL ENGINEERING

## Hiring Slowed Significantly



CORNELL ENGINEERING

## Plan for Excellence

- CoE will update its strategic plan (from 2004)
- Hiring with a focus on achieving or sustaining preeminence in strategic areas
  - Hire now in strategic areas; Increase diversity of faculty
  - Long term goal: reduce student/faculty ratio
- Diversify sources of research funding
  - Sustain outstanding record with NSF and NIH
  - Increase industrial funding; encourage entrepreneurial activity by faculty and students
  - Encourage “centers” across quad; enhance infrastructure
  - Graduate fellowship for each incoming PhD student
- Undergraduate Program: Second to None
  - Biomedical Engineering Major
  - Focus on Leadership: “Ivy Engineer”

CORNELL ENGINEERING