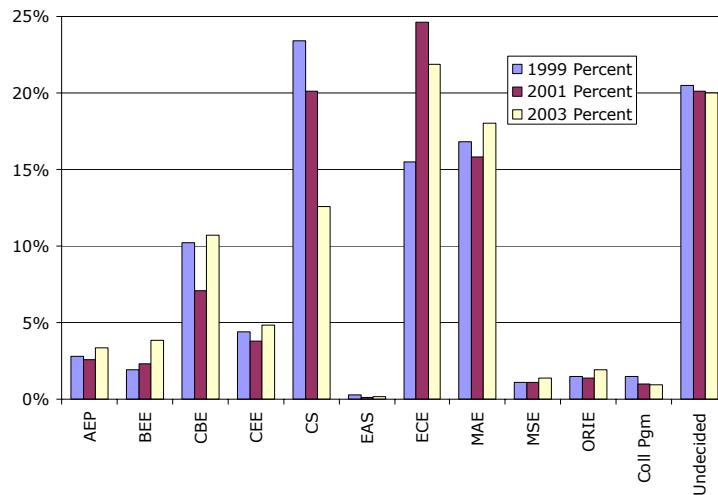


Key College Metrics - Update

W. Kent Fuchs

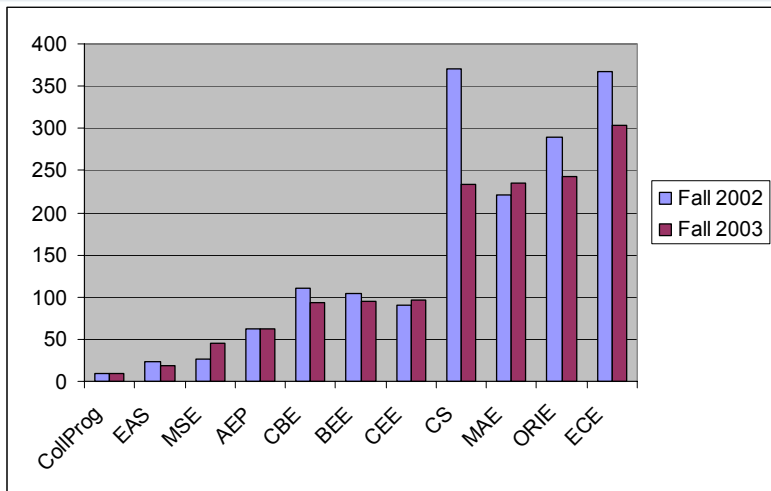
Engineering College Council Meeting
October 9, 2003

Fall Freshmen Applications by Interest





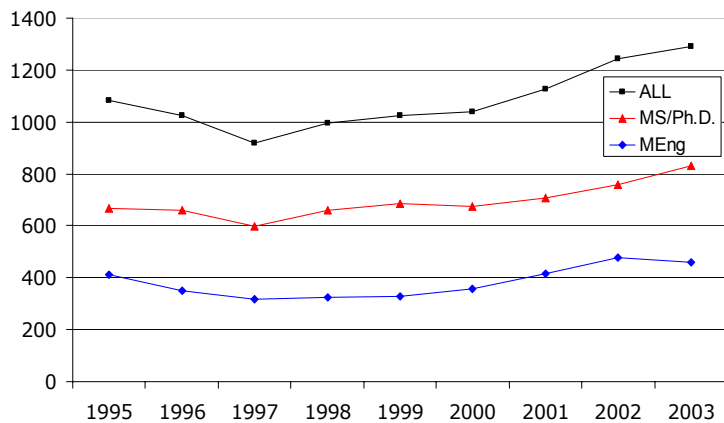
Affiliated Students



College of Engineering

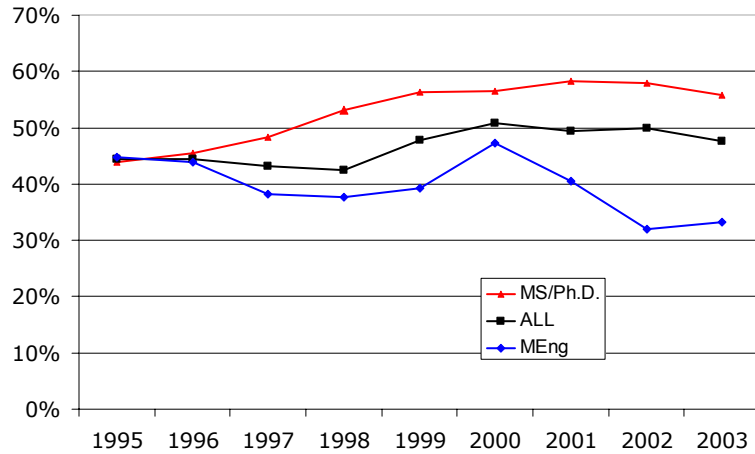


Graduate Student Enrollment

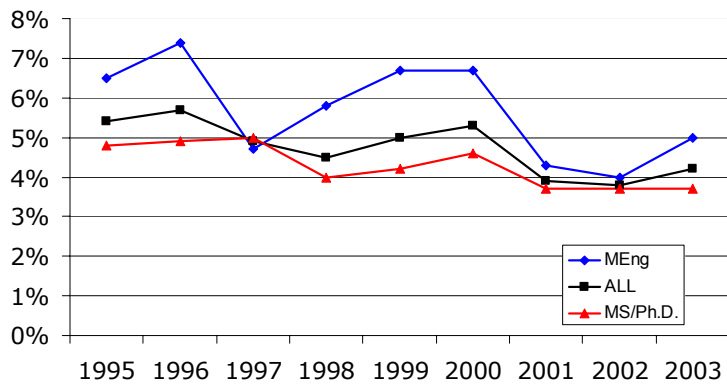


College of Engineering

Graduate Student Enrollment International

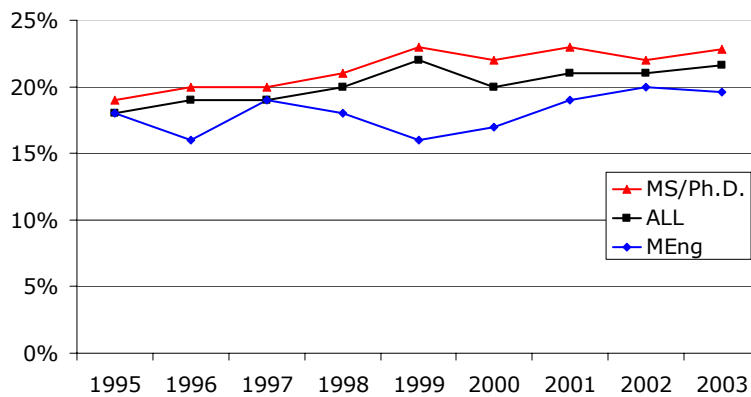


Graduate Student Enrollment Underrepresented Minorities





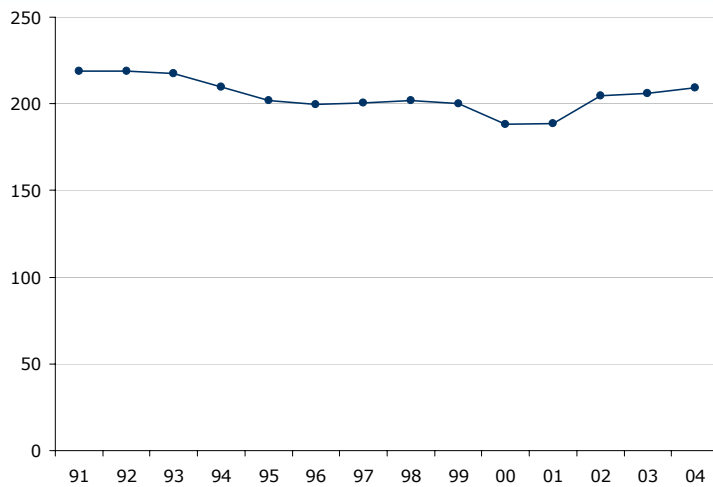
Graduate Student Enrollment Women



College of Engineering

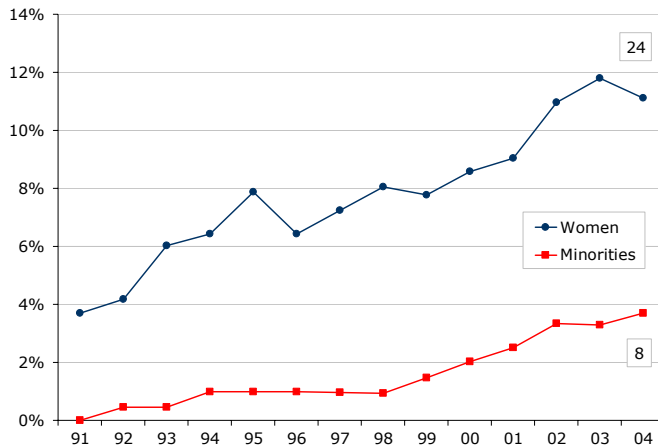


Faculty FTE



College of Engineering

Faculty Diversity



Underrepresented Minority Faculty Hires and Departures

Fiscal Year	Name Faculty Hired	Department	Title
2000-2001	Lynden Archer	CBE	Associate Professor
2000-2001	Ephrahim Garcia	MAE	Associate Professor
2001-2002	Lance Collins	MAE	Professor
2003-2004	Wilkins Aquino	CEE	Assistant Professor

Fiscal Year	Name Faculty Departed	Department	Title
2002-2003	Alfred Phillips	ECE	Associate Professor

Women Faculty Hires

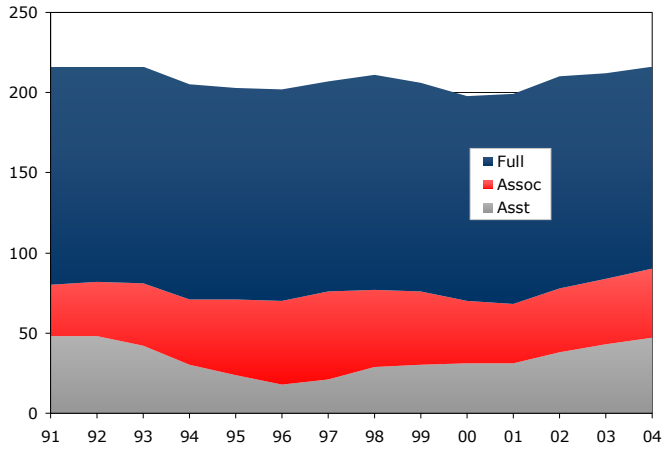
Fiscal Year	Name Faculty Hired	Department	Title
2000-2001	Rachel Davidson	CEE	Assistant Professor
2000-2001	Lois Pollack	AEP	Assistant Professor
2001-2002	Michal Lipson	ECE	Assistant Professor
2001-2002	Ruth Richardson	CEE	Assistant Professor
2001-2002	Anna Scaglione	ECE	Assistant Professor
2002-2003	Alyssa Apsel	ECE	Assistant Professor
2002-2003	Kavita Bala	COMS	Assistant Professor
2002-2003	Sally McKee	ECE	Assistant Professor
2003-2004	Antje Berndt	ORIE	Assistant Professor
2003-2004	Xin Guo	ORIE	Assistant Professor

Women Faculty Departures

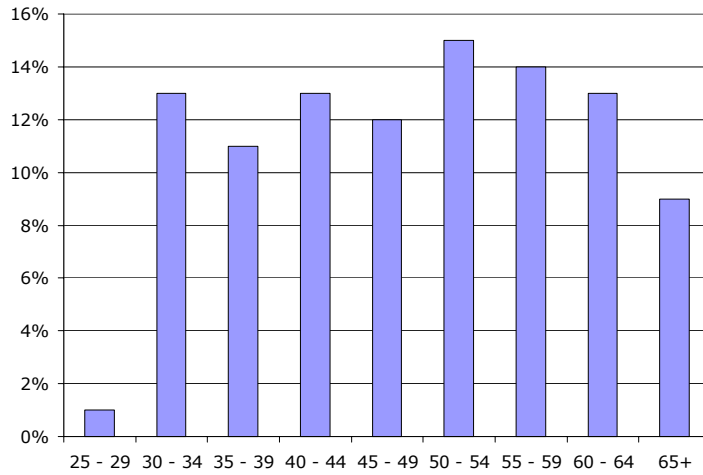
Fiscal Year	Name Faculty Departed	Department	Title
2000-2001	Ronitt Rubinfeld	COMS	Associate Professor
2000-2001	Elizabeth Slate	ORIE	Associate Professor
2002-2003	Sarah Billington	CEE	Assistant Professor
2003-2004	Yuri Suzuki*	MSE	Associate Professor

* On leave since July 2002.

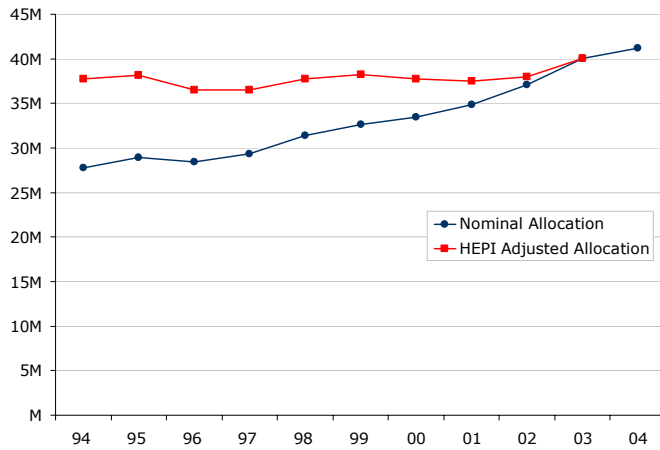
Faculty by Rank



Faculty Age Distribution-Fall 03

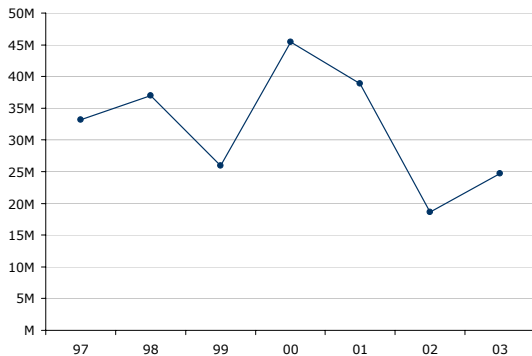


Engineering Budget - University Allocation



DEVELOPMENT

New Gifts and Commitments



1997-01

Duffield Hall campaign begun
(David Duffield gives \$20M)

2001

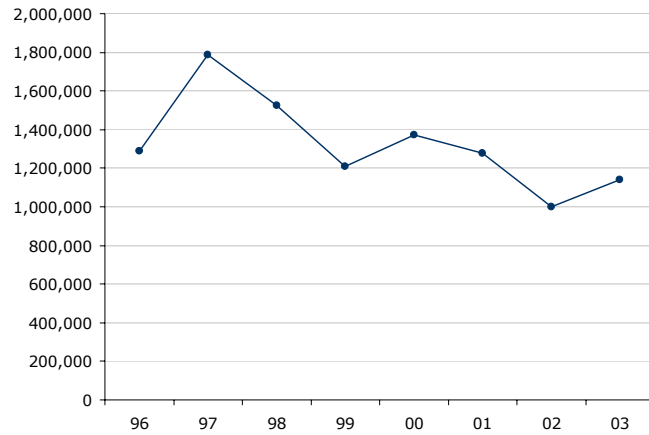
University scholarship
campaign

2003

Duffield Hall endowment
(Dave Duffield gives \$10M)



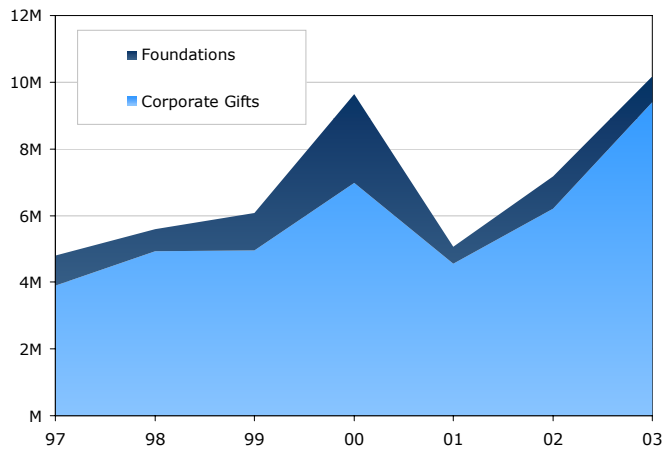
Unrestricted Gifts-Cornell Fund



College of Engineering



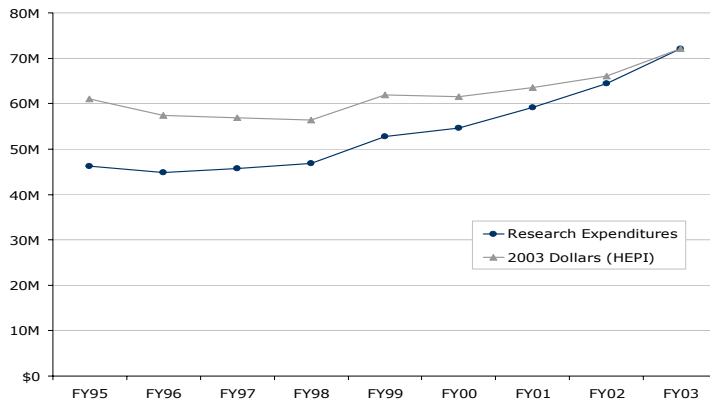
Corporate Donations



College of Engineering



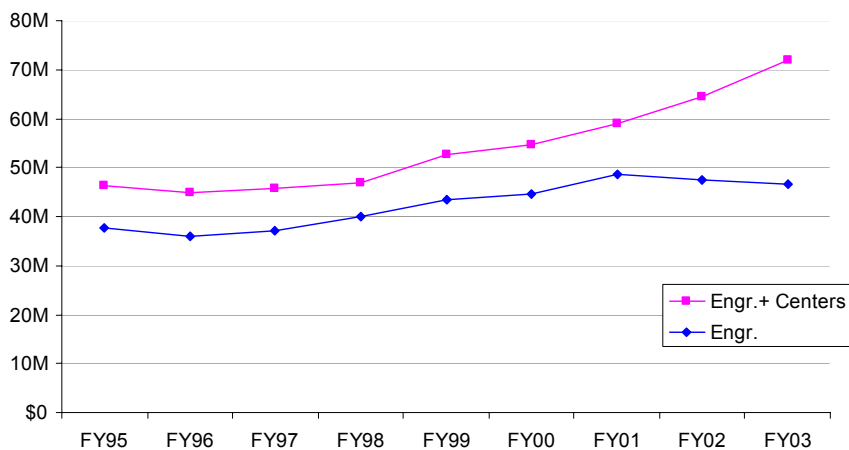
HEPI Adjusted Research Expenditures for Engineering



College of Engineering

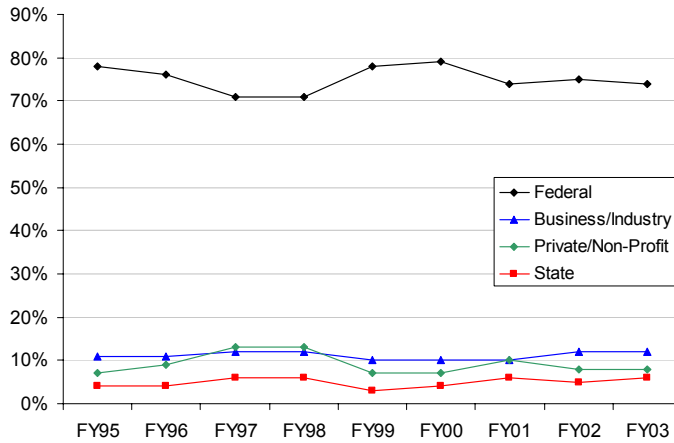


Research Expenditures



College of Engineering

Percent Distribution of Research Expenditures



Research Expenditures – Distribution of Federal Funding

