



“CENTERED”

Concepts for a New Engineering College Center

ENGINEERING COLLEGE COUNCIL

Meeting of April 10, 2003



Today’s focus will be on:

- **Our Goal**
- **The Process**
- **Technology’s Impact**
- **The Need for a Center**
- **Envisioning the “Center”**

Our Goal

To build a center that will be the gateway to the college and will enable learning, discovery, and creation supported by cutting edge technology.



The Process

- **We are at the beginning**
- **We have been here before**
- **The concept is different**
- **The urgency is greater**

Planning Partners

This presentation is a joint effort of:

Jim Bucko, *Director of Facilities*

Betsy East, *Assistant Dean for Student Services*

Mike Hayes, *Director of the Office of Research, Graduate Studies and Professional Education*

Terry Jordan, *Associate Dean for Undergrad Programs*

Cathy Long, *Assistant Dean for Administration*

John Saylor (On Leave), *Director of the Engineering Library*

Zsuzsa Koltay, *Interim Director of the Engineering Library*

Deborah Cox, *Assistant Dean for Strategic Planning, Assessment and New Initiatives*

Technology's Impact

- **Access to vast amounts of information**
- **Distributive learning**
- **Global connections**
- **Electronic dialogue**
- **Speed of communication**
- **Need for new skills to use technology**



Current Situation

- **Student Services in 3 buildings**
- **Library overcrowded/outdated**
- **Outdated technology**
- **No graduate student facilities**
- **Insufficient administrative space**
- **Need to restore green space**
- **Carpenter Hall (1957) limitations**

Carpenter Hall

- 100 Workstations
- Printers/Scanners
- Laptop Borrowing
- 243,000 volumes
- 2 million microfiche
- 1500 serial subscriptions
- 5 Classrooms



Fundamental Change

- **Increased need/demand for service**
- **Need to keep pace with and support technology**
- **Renewed focus on personal interaction**
- **Emphasis on effectiveness/efficiency**
- **Reality of constant change**
- **Need for flexibility/adaptability**

The Center will Combine

- 1. Leadership**
 - 2. Learning Technology**
 - 3. Information**
 - 4. Service**
 - 5. Community**
- 

1. Leadership

- **College presence/gateway**
- **Administration**
- **Development and Alumni Affairs**
- **Cornell Society of Engineers**
- **Student association space**
- **Central network/data management**

2. Learning

- **Technology-assisted learning**
 - Workstations/software
 - Computer aided, self-guided study
 - Capability to digitally enhance assignments/projects
 - Infrastructure for distance learning -professional education
- **Individual and group study space**
- **Program space**
- **Classrooms/training space**
- **Project/research team space**

Project Astro

Aerospace Systems Technology and Rocket Operations



Goal: Construct a fully functional autonomous landing vehicle with liquid propellant rocket engines and test it on earth

Team: Multi-disciplinary group of 54 students from six fields

Structure: Three sub-teams – electrical, mechanical and business

And maybe
with...



- Project office space
- Assistance with team development/management
- Easy corporate connections
- Just-in-time access to information
- Technology supported design
- Showcase space to feature accomplishments

**ASTRO will reach
their goal.....**

3. Information

- **Profound shifts in information access and storage:**
 - Ownership to access
 - Print to digital
- **Space for equipment**
- **Storage for non-digital collections**
- **Active and quiet space**



4. Service

- **Admissions**
- **Advising**
- **Career assistance**
- **Digital media services**
- **Guidance in information discovery, evaluation and management**
- **Student records and processes**

5. Community

- **Public space for community connections**
- **Conference center**
- **Café/eating area**
- **Presentation space**
- **Meeting space**



Next Step – Benchmarking Our Peers

To be competitive we must merge our strong legacy of exceptional research, education and engagement with a technologically advanced facility.

University of Illinois



- 92,000 sq. ft
- Seats 1,200
- 1,000 networked computer connections
- Multi-media and instructional services labs
- 350,000 volumes of library materials-online catalog
- Individual and group study areas
- Conference and seminar rooms

Grainger Engineering Library and Information Center

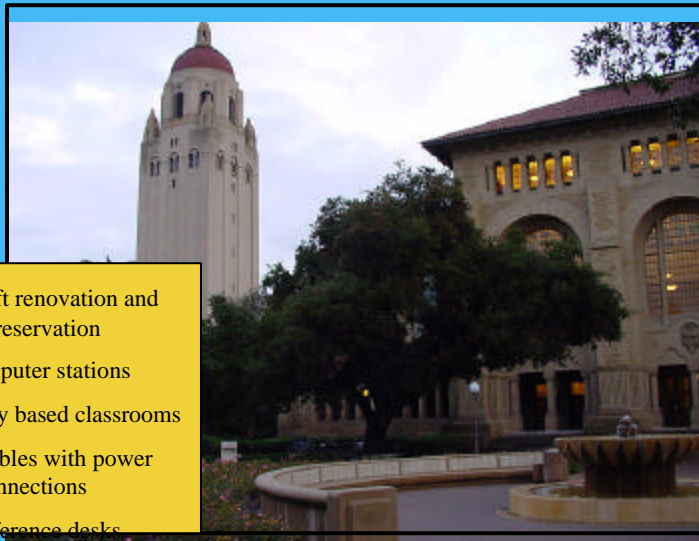
Princeton's Friends Center for Engineering Education



Princeton's Friends Center for Engineering Education

- 70,000 sq ft - Library occupies 40% of building
- Connected to Computer Science facility
- Classrooms supported by technology
- Group and individual study rooms
- Public PCs with data connections/laptops available
- Power and data connections at every seat and table
- Document workstations (CD, Scanner, Zip Drive)
- State of the art computer studio

Stanford's Green Library

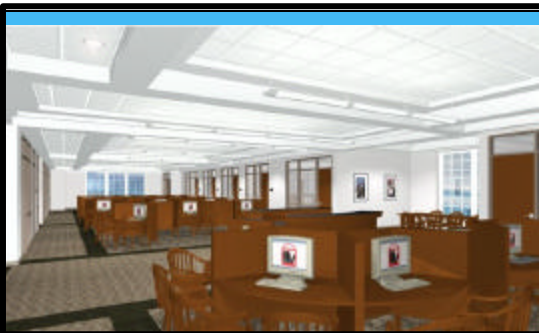


- 30,000 sq ft renovation and historical preservation
- Kiosk computer stations
- Technology based classrooms
- Reading tables with power and data connections
- Service/reference desks

Univ.of Georgia Learning Center



— "the Student Learning Center is unique - no other building at any —
University integrates classrooms and library space as this building will"



Interior of the Learning Center



- Electronic teaching library (100,000 sq. ft)
 - 500 networked workstations
 - 2200 seats
 - 96 group study rooms
- Coffee house
- Soft seating
- A traditional reading room
- 26 Electronic classrooms with seats for 2200 students

University of Georgia

Summary

- **Confluence - Library, learning, and leadership**
- **Connection-Wireless technology**
- **Consolidation - Student programs, resources, services, and technology**
- **Convergence - One to one/many to many**
- **Conservation – Optimize all we do**

The Invitation

**Please join our students in
today's breakout session
to begin to envision
“The Center”**

Questions/Comments

