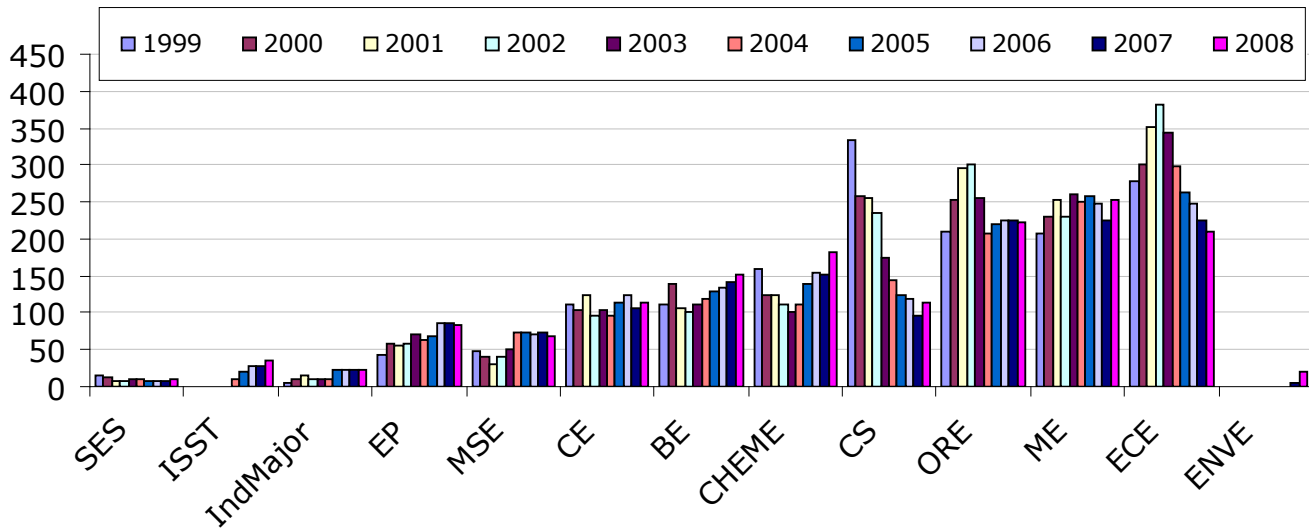
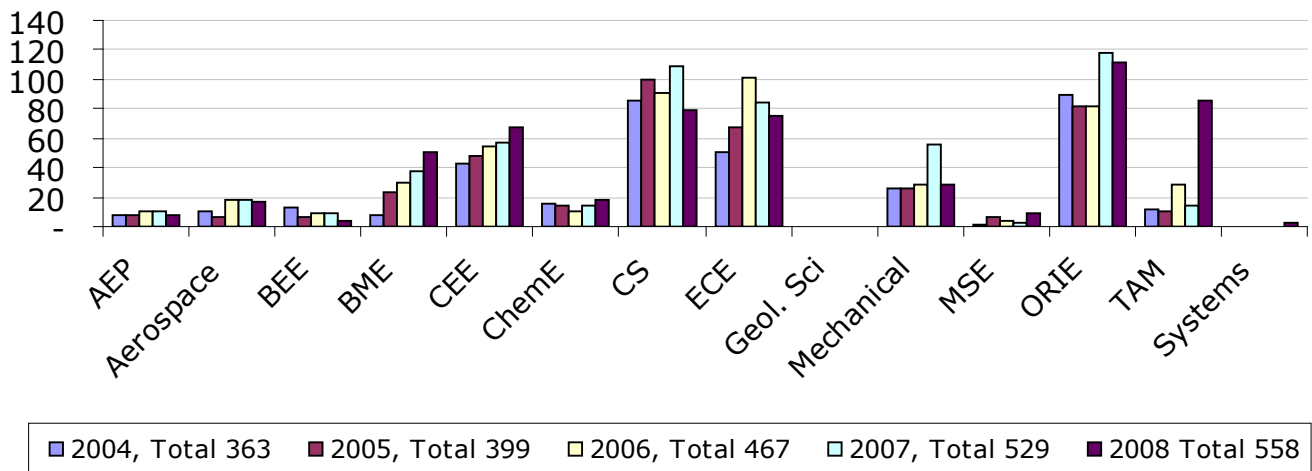


Affiliated Undergraduate Students



MEng Enrollment

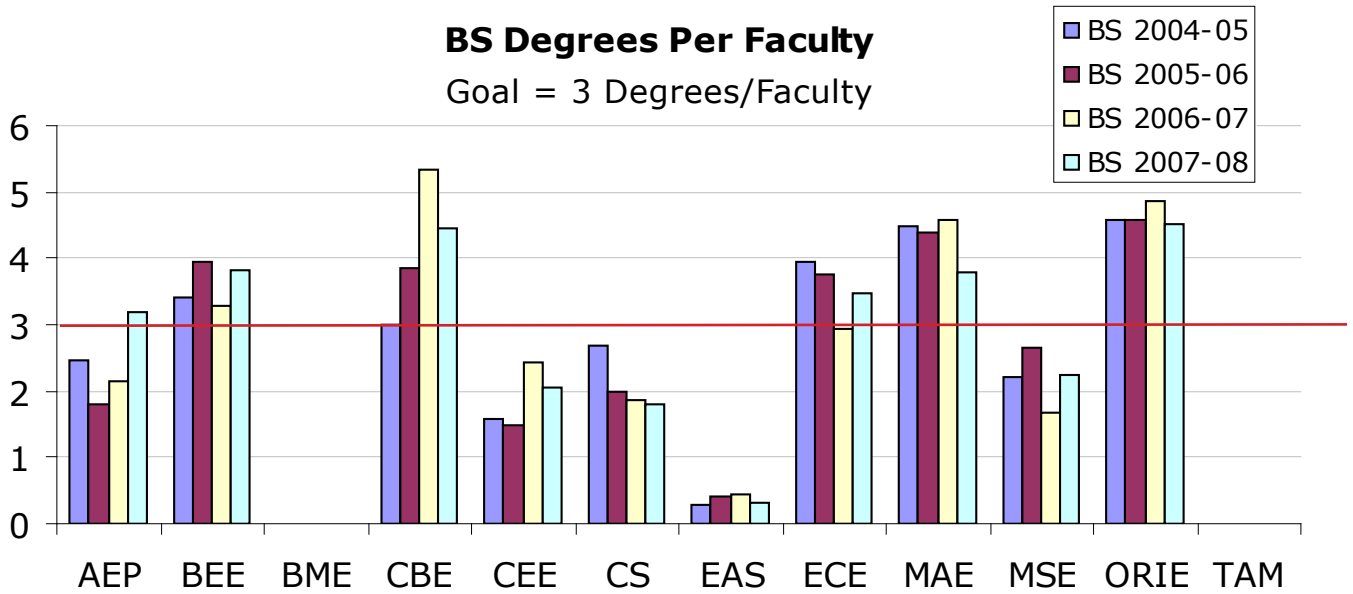


■ 2004, Total 363 ■ 2005, Total 399 ■ 2006, Total 467 ■ 2007, Total 529 ■ 2008 Total 558

CORNELL ENGINEERING

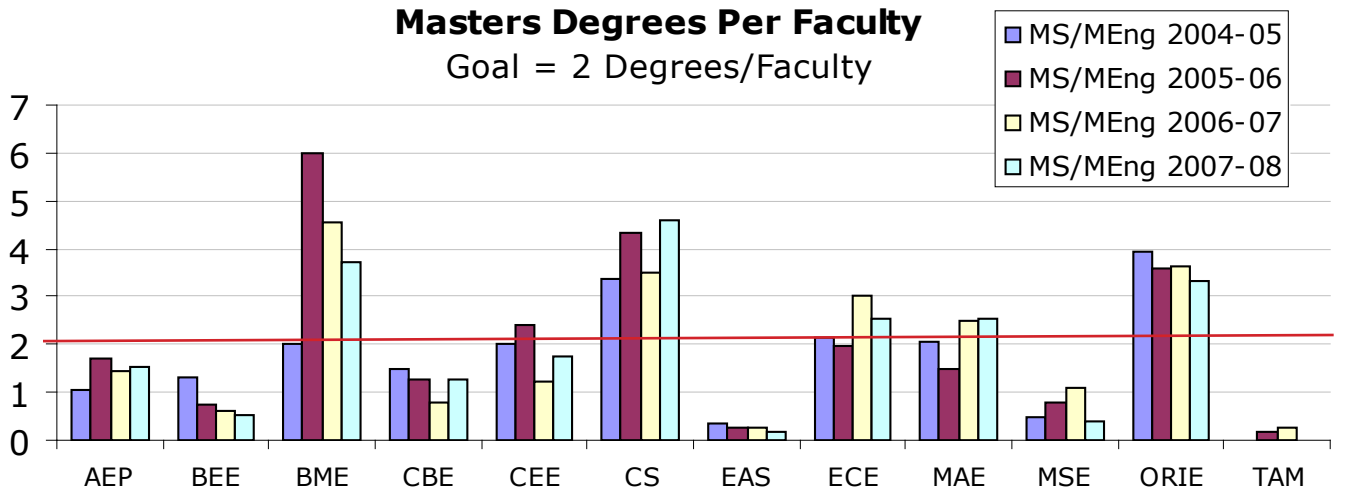
BS Degrees Per Faculty

Goal = 3 Degrees/Faculty



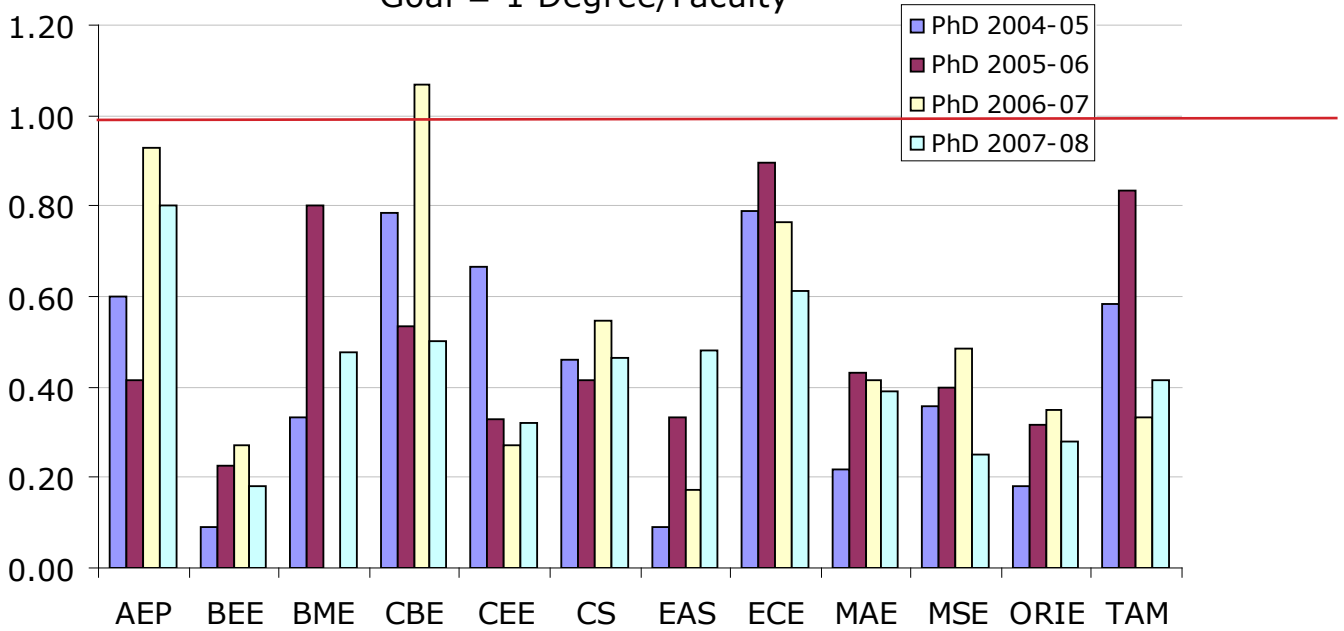
Masters Degrees Per Faculty

Goal = 2 Degrees/Faculty

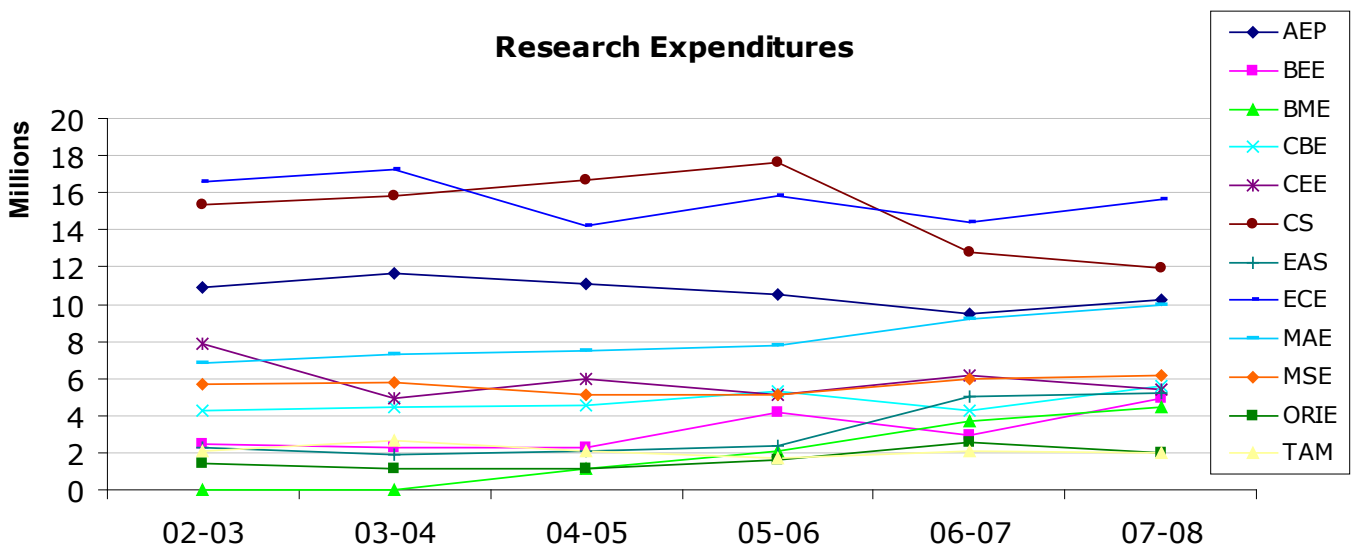


PhD Degrees Per Faculty

Goal = 1 Degree/Faculty



Research Expenditures



CORNELL ENGINEERING

Department	2005-06 Perm Faculty	Projected Perm Faculty
Applied and Engineering Physics	12	15
Biomedical Engineering	6.75	15
Chemical and Biomolecular Engineering	16	19
Civil and Environmental Engineering	26	27
Computer Science	29	34*
Earth and Atmospheric Science	10	11
Electrical and Computer Engineering	39	44
Materials Science and Engineering	13	16
Mechanical and Aerospace Engineering	25.17	31
Operations Research and Information Engineering	17.25	20
Theoretical and Applied Mechanics	12	13

Does not include BEE.

Source: Facilities Master Plan and Renovation Plan

* CIS Data

Department	2005-06 NSF	Projected NSF	% Increase
Applied and Engineering Physics	39,237	56,108	43.00%
Biomedical Engineering	742	45,662	NA
Chemical and Biomolecular Engineering	59,225	76,165	28.60%
Civil and Environmental Engineering	72,581	98,263	35.40%
Computer Science	42,257	59,100*	39.9%*
Earth and Atmospheric Science	42,500	42,500	0.00%
Electrical and Computer Engineering	83,339	123,954	48.70%
Materials Science and Engineering	38,613	65,113	68.60%
Mechanical and Aerospace Engineering	67,787	103,554	52.80%
Operations Research and Information Engineering	20,043	39,756	98.40%
Theoretical and Applied Mechanics	20,571	24,382	18.50%

Does not include BEE.

Source: Facilities Master Plan and Renovation Plan

* CIS Data