



Overview

- Leadership Changes
 - College
 - University
- New Faculty
- College Initiatives
 - Capital Campaign Status
 - Marketing-- Media Logic
- Academic Initiatives
 - Systems Engineering DL MEng Program
 - Biomedical Engineering
 - Energy/Sustainability in the Curriculum
- College Trends (tracking progress)
- New Challenge - Budget
- Facilities Master Plan Progress
- Looking to the Future

Leadership Changes College Directors and Chairs



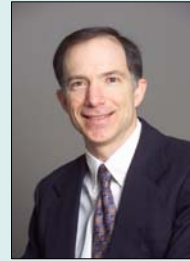
Daniel Aneshansley, BEE



Larry Brown, EAS



Leonard Lion, CEE



Alan Zehnder, TAM

CORNELL ENGINEERING

School Directors and Department Chairs



Frank Wise-AEP



Dan Aneshansley-BEE



Mike Shuler-BME



Paulette Clancy-CBE



Leonard Lion-CEE



Eva Tardos-CS



Larry Brown-EAS



Cliff Pollock-ECE



Emmanuel Giannelis-MSE



Lance Collins-MAE



Jim Renegar-ORIE



Alan Zehnder-TAM

CORNELL ENGINEERING

New Associate Dean for Administration

Degrees:

- University of Pennsylvania
Ed.D. Higher Education Management
- Cornell University
M.B.A.
- Georgetown University,
B.S.F.S., Economics and International Politics



Cathy Dove

Cornell Experience:

- Associate Dean of MBA Programs and Administration
S.C. Johnson Graduate School of Management
- Director, Financial Management Services
- Associate Director for Administration, Cornell Dining

CORNELL ENGINEERING

College Leadership Team



Richard Almendinger, Assoc. Dean for Diversity



Cathy Dove, Assoc. Dean for Administration



David Gries, Assoc. Dean for Undergraduate Programs



Christopher Ober, Assoc. Dean for Research and Graduate Studies



Deborah Cox, Asst. Dean for Strategic Planning, Assessment, and New Initiatives



Tim Dougherty, Asst. Dean for Alumni Affairs and Development

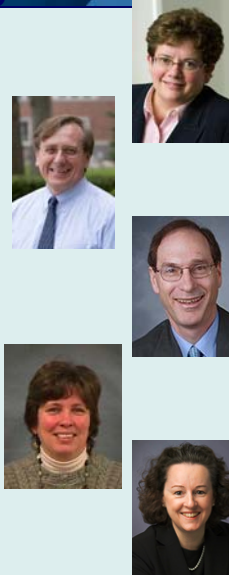


Betsy East, Asst. Dean for Student Services

CORNELL ENGINEERING

University Leadership Changes

- **Biddy Martin**, Cornell Provost since July 2000, become Chancellor of the University of Wisconsin-Madison in May
- **Kent Fuchs**, Engineering Dean since July 2002, appointed Provost effective January 1, 2009
- **David Wippman**, Vice Provost for International Relations, became Law School Dean at the University of Minnesota in May
- **Alice Pell**, Professor of Animal Science, appointed as the new Vice Provost for International Relations
- **Carolyn Ainslie**, Vice President for Budget and Planning, now Vice President for Finance at Princeton University



CORNELL ENGINEERING

New Faculty



Craig Fennie, AEP



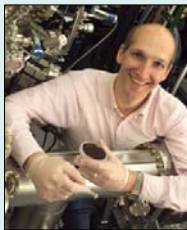
Michael King, BME



Hadas Kress-Gazit, MAE



Richard Robinson, MSE



Darrel Schlom, MSE



Jefferson Tester, CBE



Hakim Weatherspoon, CS

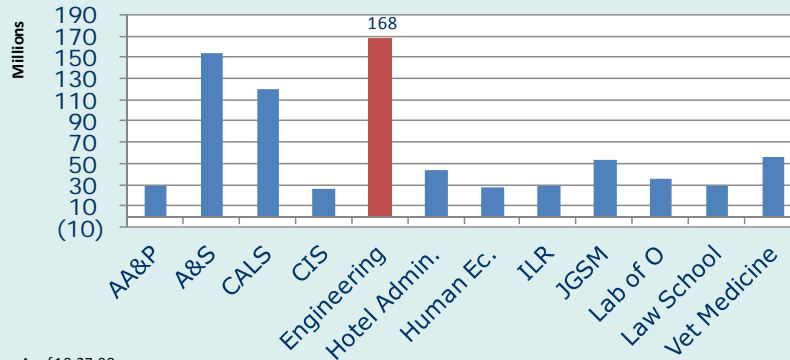


Dawn Woodard, ORIE

CORNELL ENGINEERING

Capital Campaign Update

- \$2.3B of the \$4B university goal has been raised.
- Engineering has raised 45% of its university approved \$375M goal as of 9/30/08:



As of 10.27.08

CORNELL ENGINEERING

College Visibility Media Logic

- Brand Platform
 - Position/Position by Audience
 - Brand Attributes/Personality
 - Tonality and Imagery
- Graphic Standards
 - ENG Mark and University Insignia
 - Hierarchy/Typography
 - Color Palette/Gradients
 - Photography Guidelines
 - Parallel Structures/Illustrated Graphics/Duo Tones
 - Grids/Templates

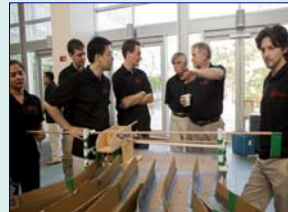


CORNELL ENGINEERING

New Systems Engineering Distance Learning MEng Program



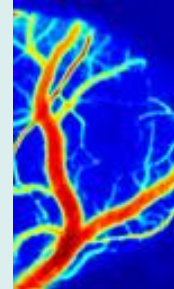
- Approved by Cornell, NYSED and Middle States Accreditation
- Targets professionals who want to earn a degree part-time
- First class fall 08 - 16 students
- Video streamed lectures and interactive web course sites
- Requires two on-campus summer courses



CORNELL ENGINEERING

Biomedical Engineering 2007-08 Update (this afternoon)

- Currently 11 tenure-track faculty
 - Goal of 15 tenure-track faculty
- Moved into new Weill Hall in August 08
- FY 08 BME Research = \$4,843,426
- Degrees Granted 07-08:
 - MEng 35 (51 enrolled in Fall 08)
 - PhD 5 (62 enrolled in Fall 08)
- 42 undergrad BME Minors and 44 undergrads worked on BME research projects
- Challenge
 - Space in Weill Hall for only 13 faculty
 - No room for research growth



CORNELL ENGINEERING

Energy/Sustainability in the Curriculum - handout by Clancy and Jordan

- Expanded MEng Offerings
 - Energy Economics > from 13 to 90 students
 - Developing and Discussing MEng in Sustainable Energy Systems and a Grad Field offering a minor in Energy Systems (No PhD)
- 3 New Graduate Courses Under Development
 - Management of Earth-Energy Systems
 - Energy Systems Engineering (To be developed in 09-10)
 - Systems Modeling for Sustainable Living
- Spread Energy Literacy
 - Develop new energy literacy course – summer 2009
 - Develop more comprehensive “Energy at Cornell” web site

CORNELL ENGINEERING

College of Engineering Teaching Excellence Institute

Director of the Institute hired Aug '08 -
Dr. Kathryn Dimiduk

Education

B.A. - Physics, Cornell University
Ph.D. - Applied Physics, Stanford University

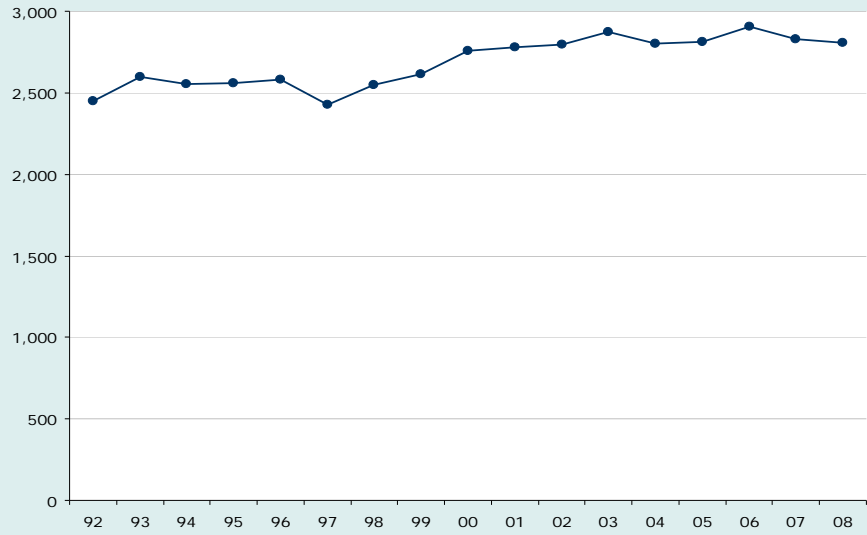


Experience

- Sr. Lecturer at the Univ. of New Mexico in the Dept of Physics and Astronomy for the last 14 years
- Received 2 teaching awards at UNM (2005 and 2007) and led the promotion of effective and innovative teaching
- President of the SW Section of the American Association of Physics Teachers

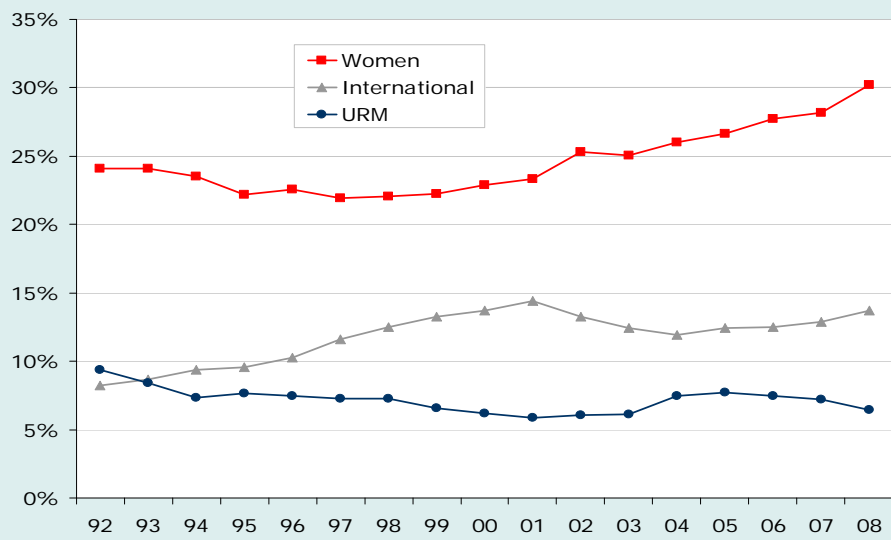
CORNELL ENGINEERING

Engineering Undergraduate Enrollment



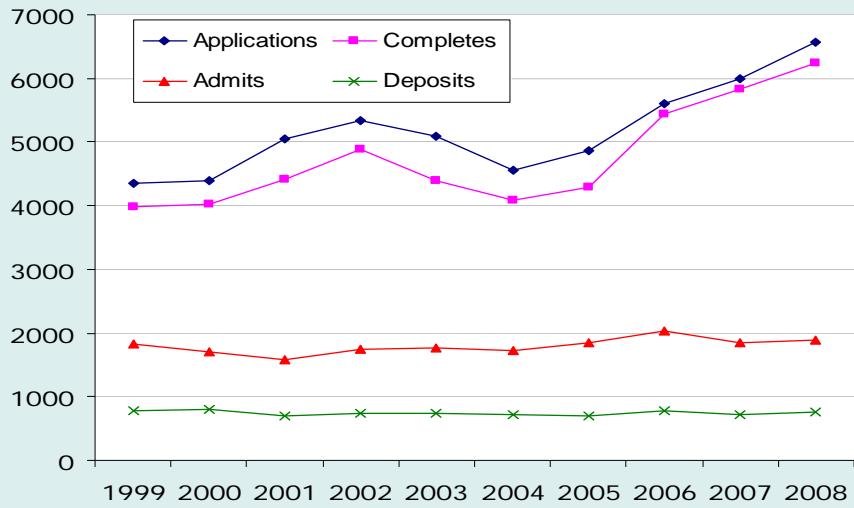
CORNELL ENGINEERING

Undergraduate Women, Minorities and International



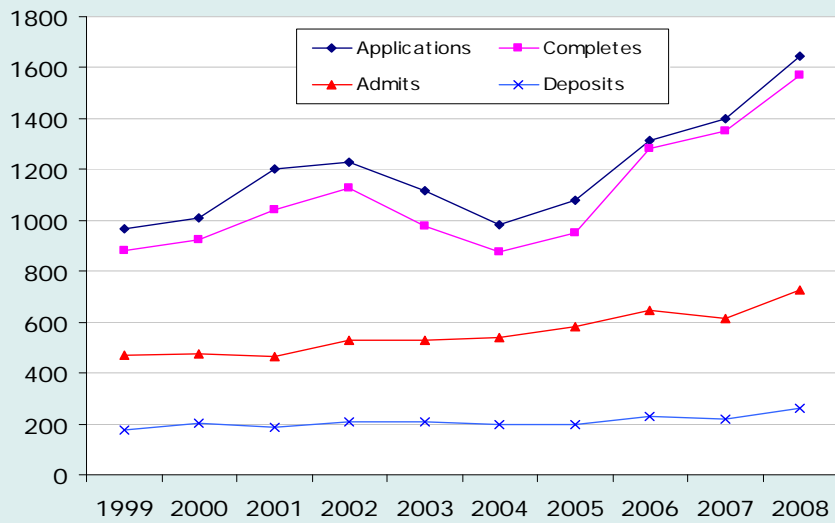
CORNELL ENGINEERING

Total Applications for Admission



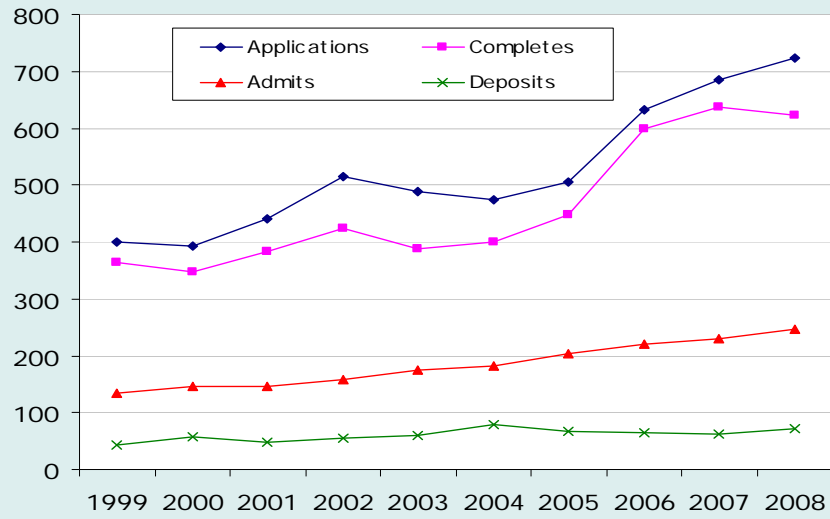
CORNELL ENGINEERING

Applications - Women



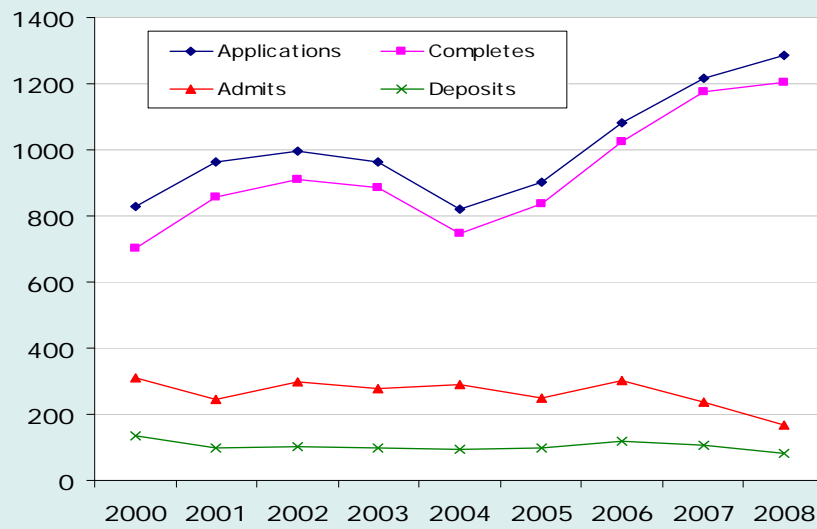
CORNELL ENGINEERING

Applications - URMs



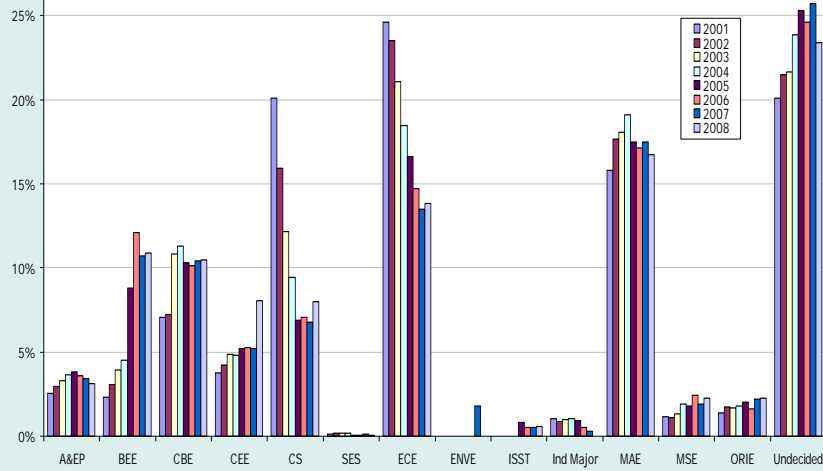
CORNELL ENGINEERING

Applications - International



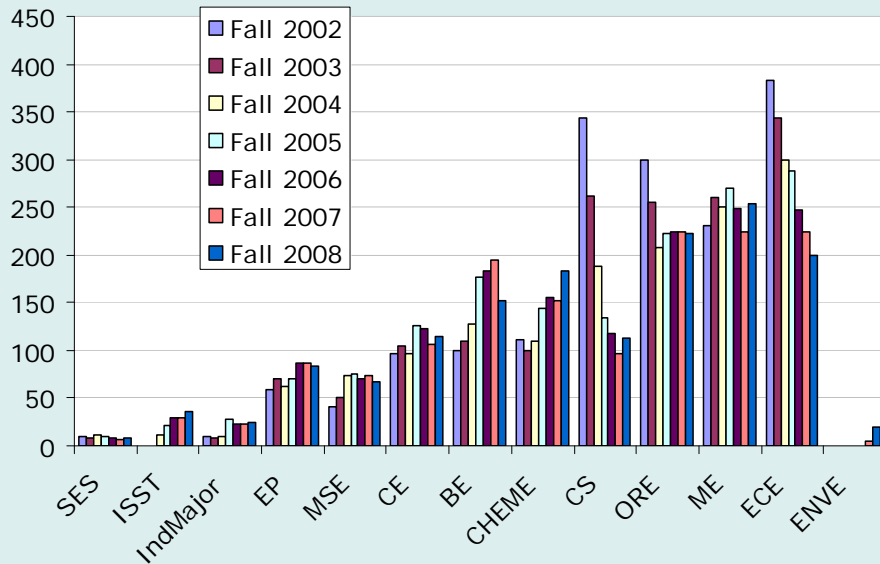
CORNELL ENGINEERING

Fall Freshman Engineering Applications by Interest



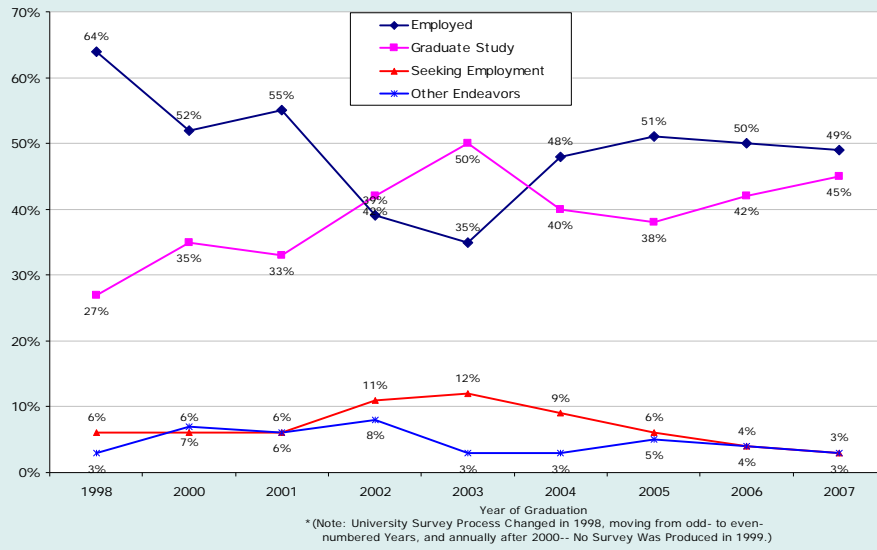
CORNELL ENGINEERING

Affiliated Students



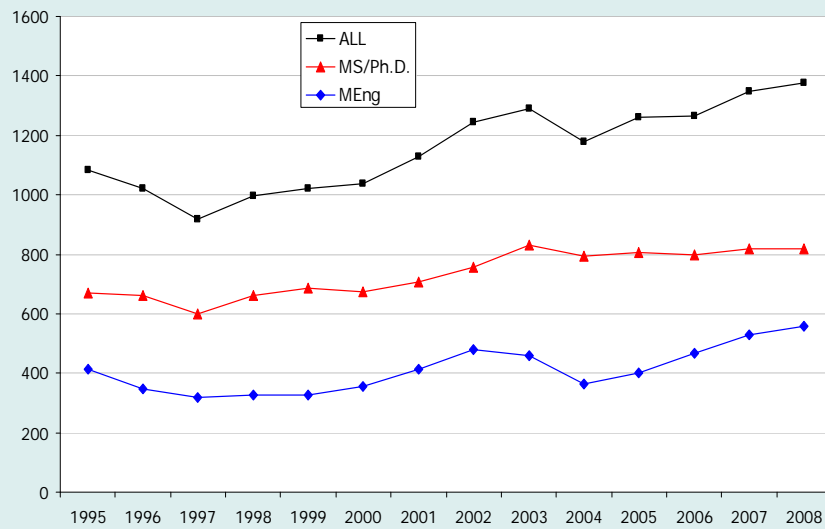
CORNELL ENGINEERING

Undergraduate Post Graduate Activities



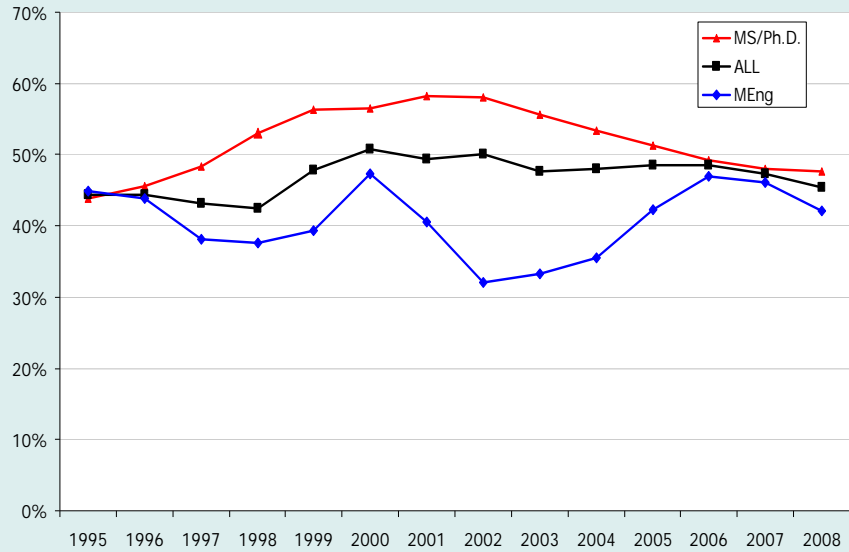
CORNELL ENGINEERING

Graduate Student Enrollment



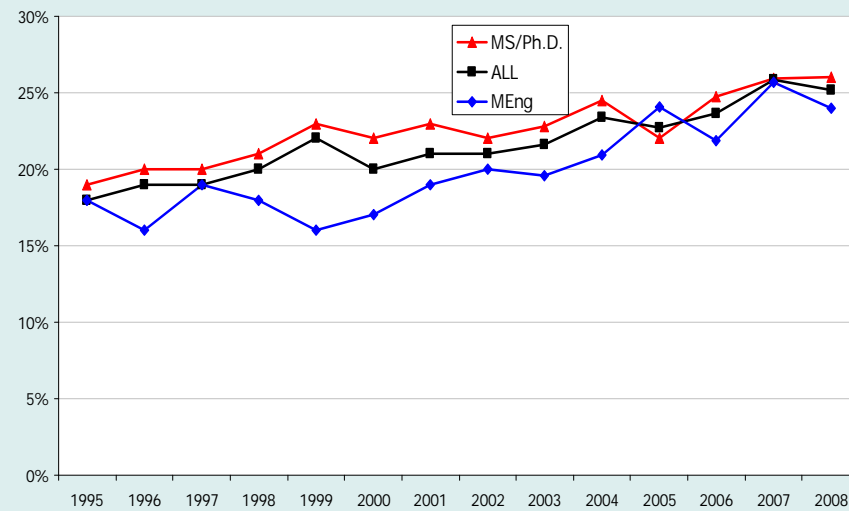
CORNELL ENGINEERING

Graduate Student Enrollment International



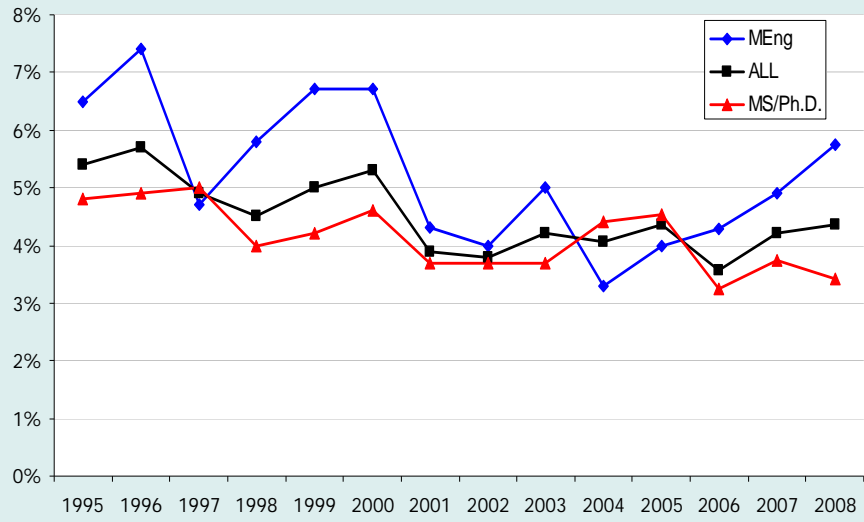
CORNELL ENGINEERING

Graduate Student Enrollment Women



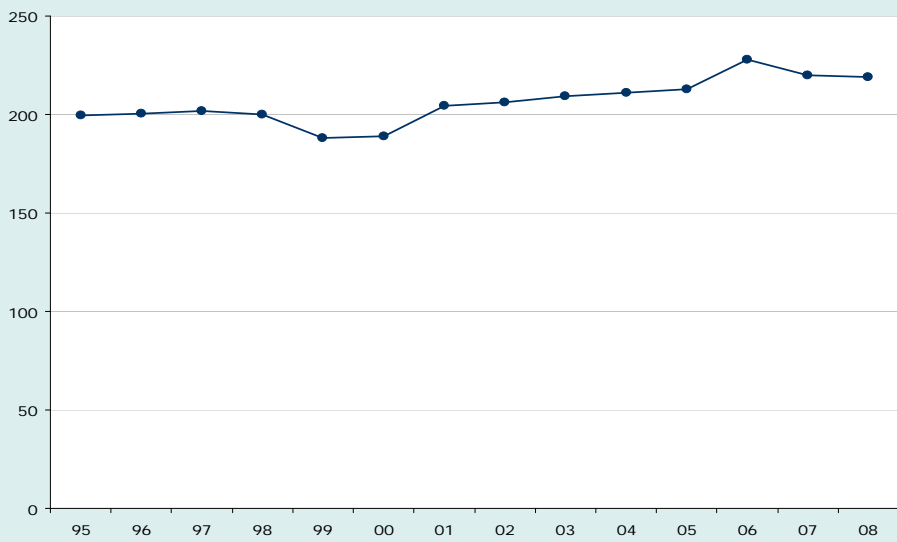
CORNELL ENGINEERING

Graduate Student Enrollment URM's



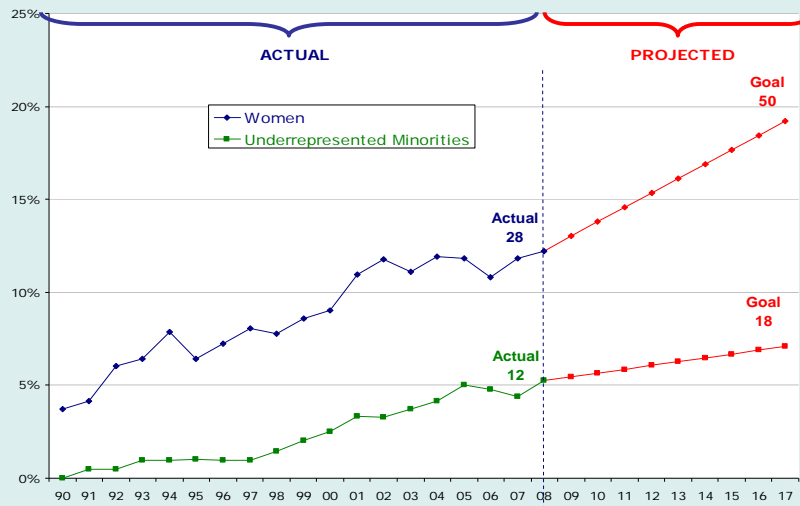
CORNELL ENGINEERING

Faculty FTE



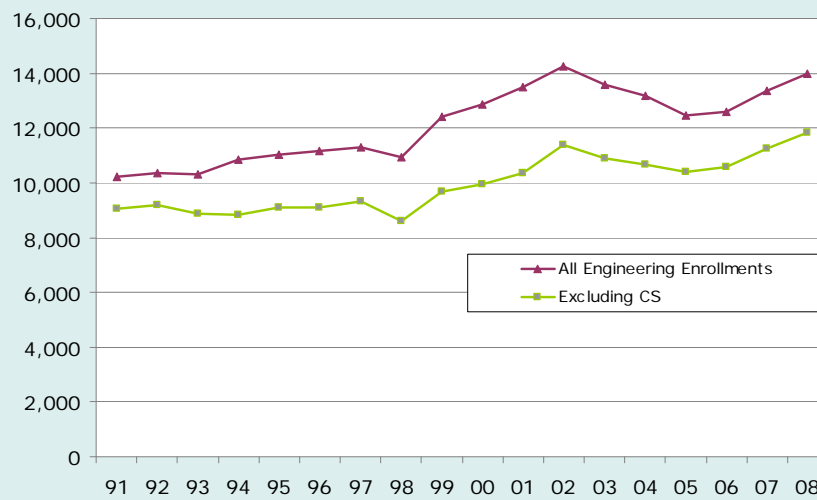
CORNELL ENGINEERING

% Faculty Women and URMs Actual and Projected



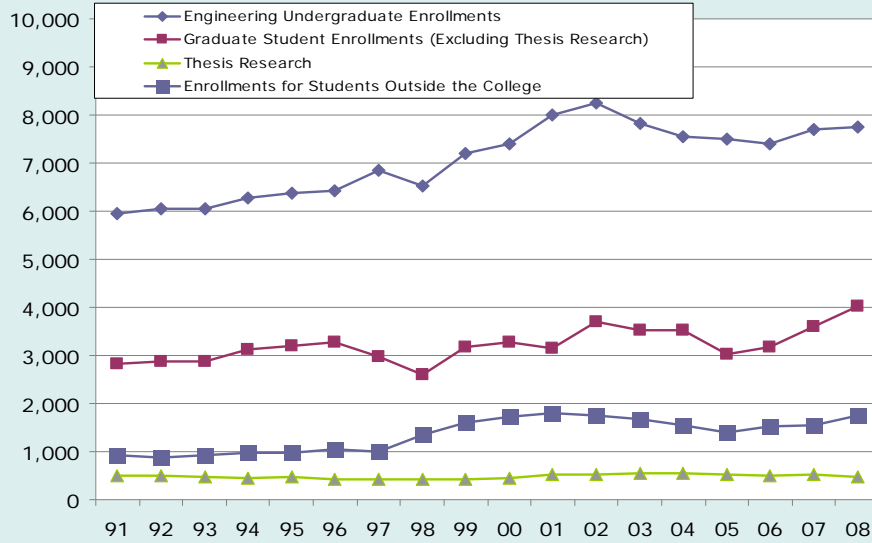
CORNELL ENGINEERING

Engineering Course Enrollment



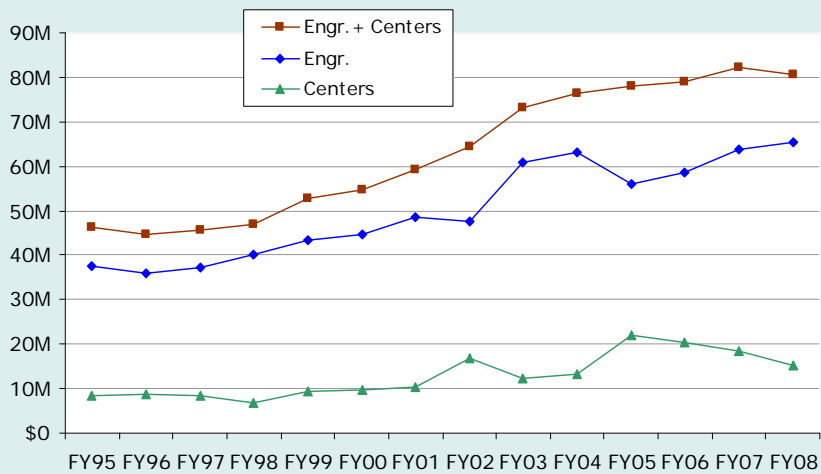
CORNELL ENGINEERING

Breakdown of Engineering Course Enrollment



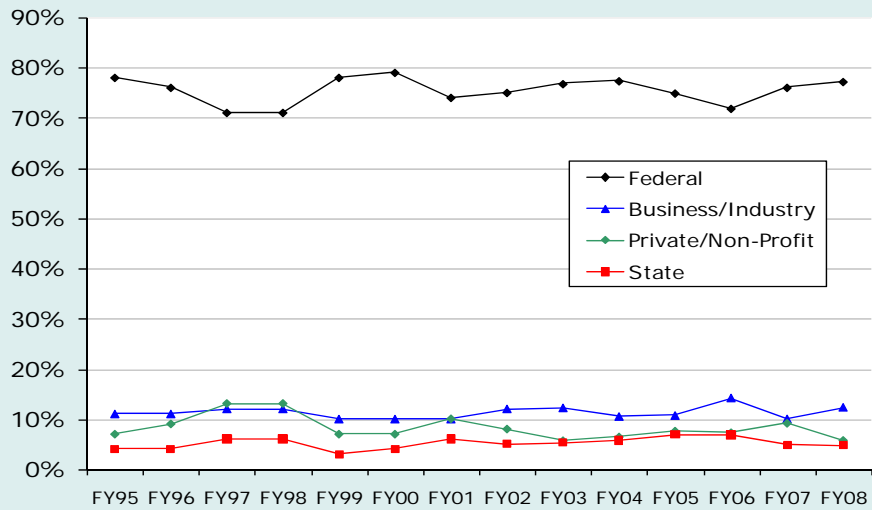
CORNELL ENGINEERING

Research Expenditures



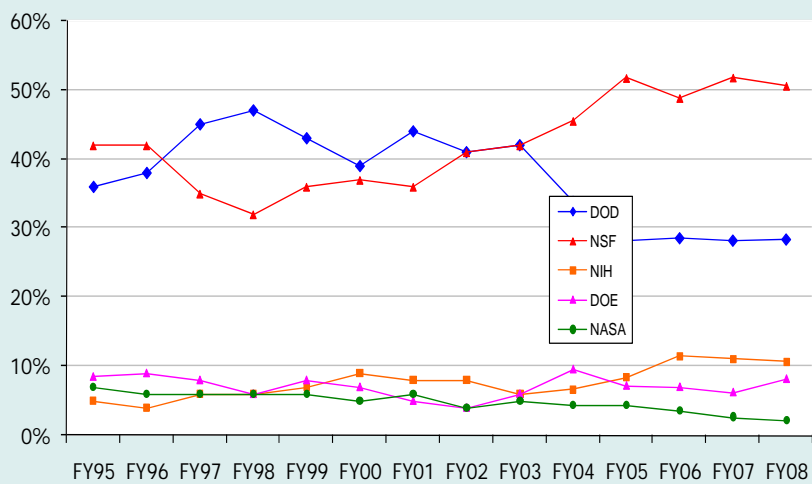
CORNELL ENGINEERING

Percent Distribution of Research Expenditures



CORNELL ENGINEERING

Research Expenditures – Distribution of Federal Funding



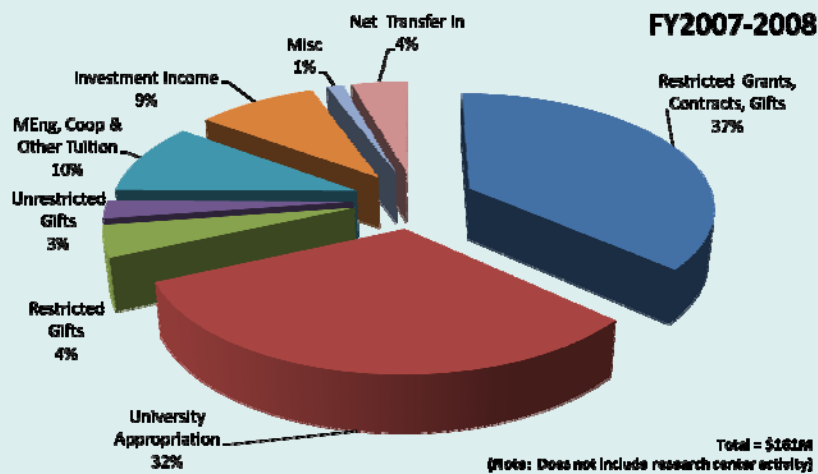
CORNELL ENGINEERING

What "Keeps Us Up at Night" University Budget Pressures

- Revenue sources
 - Tuition (limits to growth and "net")
 - State budget
 - Capital campaign and other gifts
 - Unfunded programs (facilities, financial aid)
 - Investment returns
 - Federal research
- Cost pressures
 - Salaries
 - Slow retirements
 - Competitive start-up packages
 - Utilities/energy
 - Underfunded programs
 - Maintenance
 - IT
- Fund balances

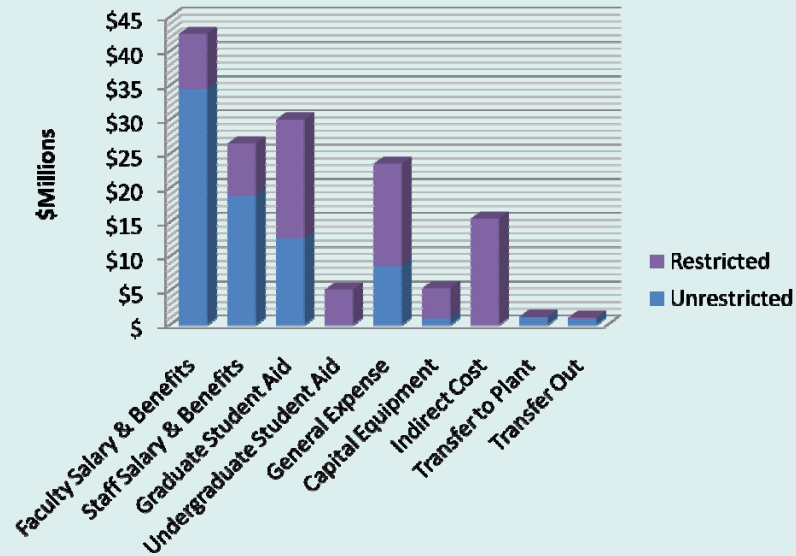
CORNELL ENGINEERING

COE Sources of Funds



CORNELL ENGINEERING

COE Uses of Funds



CORNELL ENGINEERING

Our pressures

- Likelihood of reduced university support for ongoing and on-time college initiatives
- Heavy reliance on sponsored research
- Small amounts of discretionary revenue at college and department levels
 - Reliance on MEng for discretionary funding
- Competitive marketplace..large startup packages
- Workforce transition..bridge funding
- Lean staffing
- SPACE, SPACE, SPACE

CORNELL ENGINEERING

University Principles

- Maintain standards of **excellence** as land grant
- Maintain commitment to **financial aid**
- Maintain competitive market-based **pay** programs
- Give priority to **strategic objectives**
- Consider the Ithaca campus as a “**single entity**”
- Look at operations for **efficiencies**
- Consider impact of proposals on **priorities** and the community
- **Communicate** changes openly

CORNELL ENGINEERING

Our approach

- Budget Advisory Committee charge:
 - Consider hiring approval process (with possible freeze)
 - Possibly delay facility projects
 - Identify new revenue opportunities
 - Identify process and organizational efficiencies
 - Analyze faculty productivity
 - Recommend ways to optimize use of reserves and fund balances
 - Suggest how to make more efficient use of space
 - Implement “small wins” immediately

CORNELL ENGINEERING

College Master Plan Update

- Weill Hall – Completed August 08
- Physical Sciences Building in progress



- New facility (Carpenter/Hollister replacement)–Kohn Pedersen Fox Architects (KPF) selected
- Phillips Hall 4th Floor Addition
- Renovation of Olin Hall (windows, HVAC, electric, fire alarm/sprinkler system) – Completion estimated December 2009
- Gates Hall

CORNELL ENGINEERING

Gates Hall – CIS and CS



Scheme 1

- *Polshek Partnership Architects*
- *Construction start Spring 2010*
- *Currently two phase project*
- *First Phase = 58K nsf*



Scheme 2



Scheme 3

CORNELL ENGINEERING

The College's Future

- College Mission
- College Values
- College Goals

Today's Focus - Departments and Schools

- Importance of 12 Departments and Schools
- Challenges and Opportunities
- Goals
- Measuring Progress
- Process for Your Feedback