

## Research Revenue Government Guidelines

- Full time faculty may serve as principal investigators on sponsored projects. Individuals with certain other titles may serve, under special circumstances and with the approval of the Vice Provost for Research, as a principal investigator/project director.
- The university Office of Sponsored Programs serves as the gateway for all sponsored projects and administers subsequent awards and contracts.
- The Cornell Center for Technology, Enterprise, and Commercialization (CCTEC) receives disclosures and negotiates license agreements (post-award).
- Endowed indirect cost (administrative cost) rates are:
  - On-campus 59%
  - Off-campus 26%
  - NAIC\* 11%
  - Restricted Gifts 10% (With no deliverables or intellectual property provisions)

IC is calculated on modified total direct costs (MTDC), which equals the total direct costs less the following exclusions:

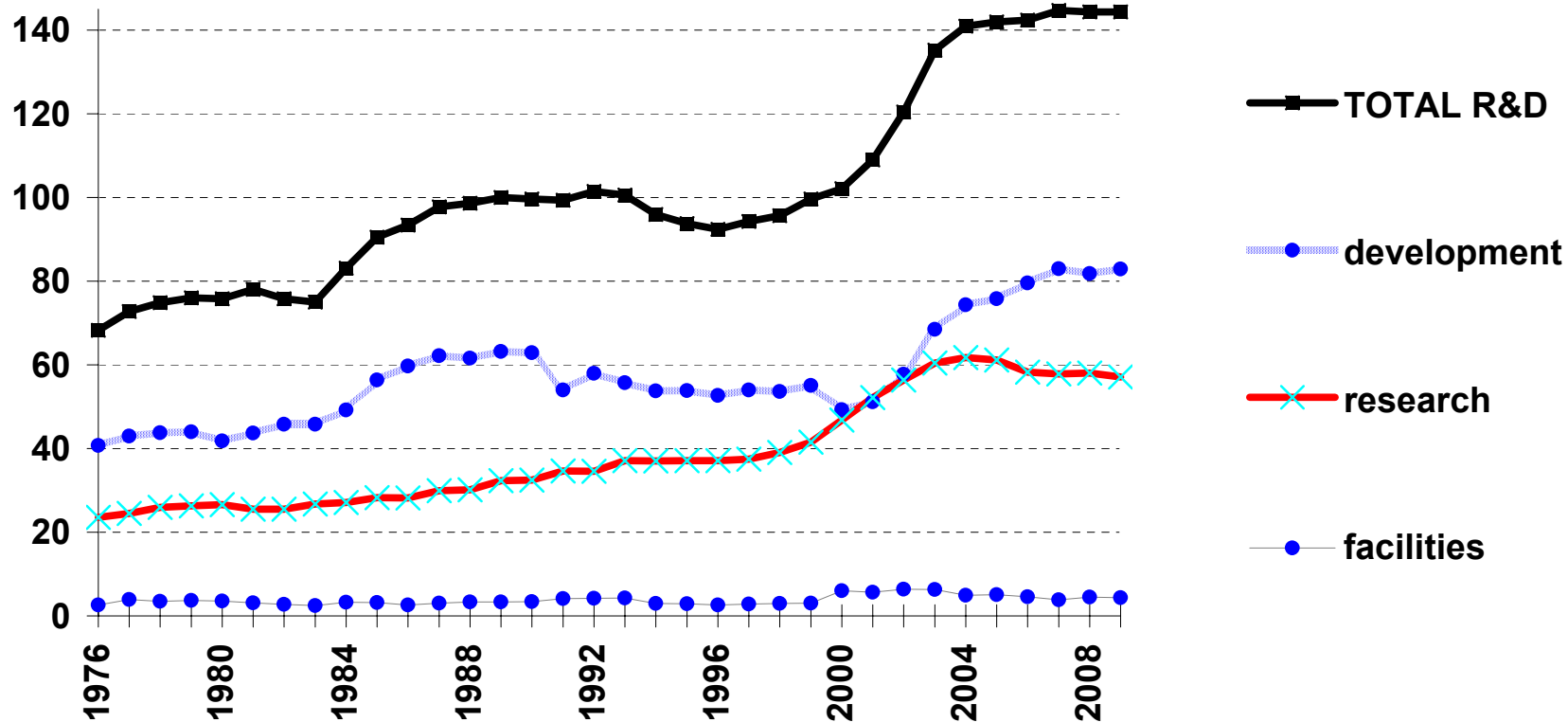
1. Capital equipment items with a unit cost of \$5,000 or more and a useful life of two years or more.
  2. Cost in excess of \$25,000 on each subcontract (IC is charged on the first \$25,000 of each subcontract).
  3. GRA exclusion (amount of GRA compensation equivalent to tuition and fees including Graduate Health Insurance).
  4. Leases of real property.
  5. Participant support costs for conferences and seminars.
- The cost of funding a graduate student assistantship (15-20 hrs/wk) in 2009-10 will be:
    - Tuition - \$29,500 (MS/PhD), \$37,750 (MEng)
    - Academic Year Stipend - \$21,400 (minimum)
    - 12 Month Stipend - \$28,533 (minimum)
    - Student Health Insurance - \$1,514 (individual)
    - Student Activity Fee - \$70
  - Engineering faculty appointments are for nine months. In most cases faculty salary support on government grants is focused on summer salary. Faculty are not required to fund portions of their academic year salary.

\*NAIC – National Astronomy Ionosphere Center (Arecibo Observatory)

# Trends in Federal Research and Development

## Trends in Federal R&D, FY 1976-2009 (as of 9/08) \*

in billions of constant FY 2008 dollars

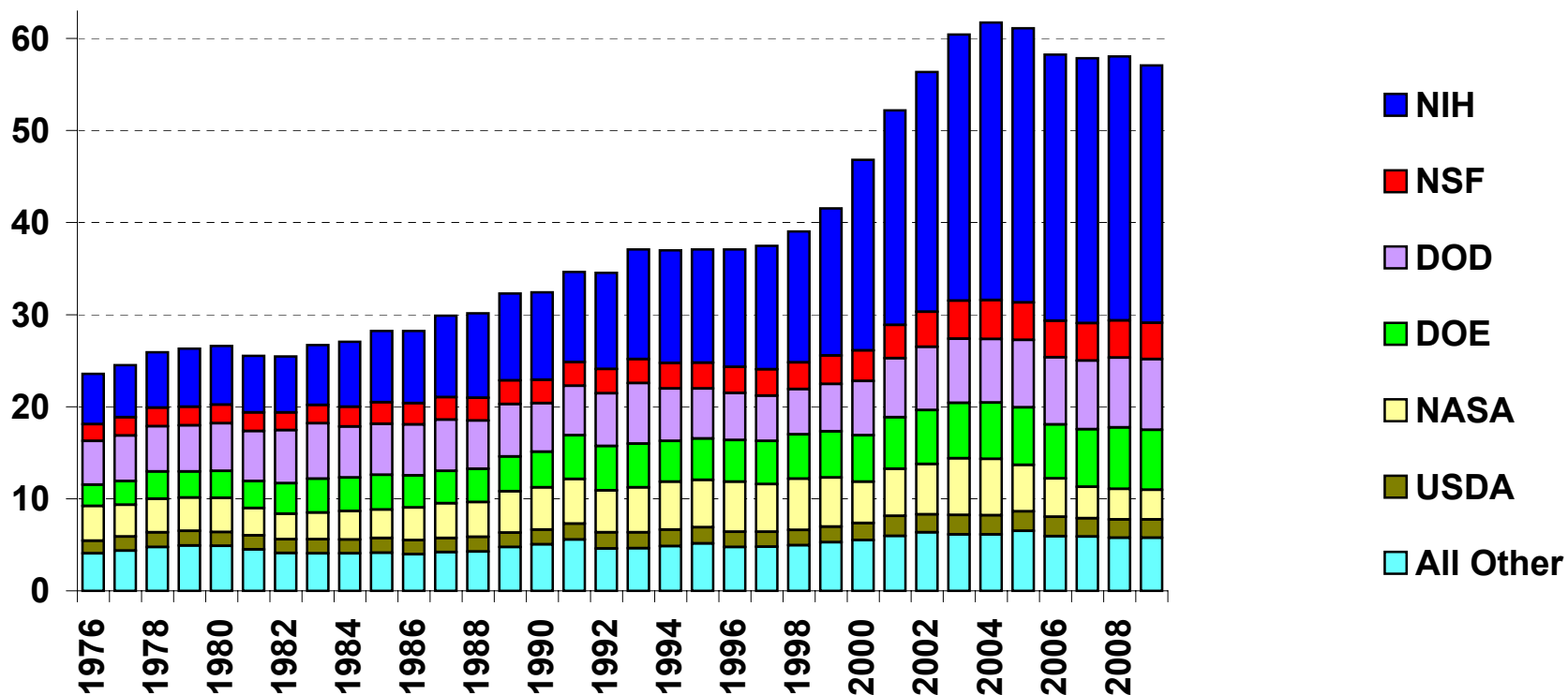


Source: AAAS analyses of R&D in annual AAAS R&D reports. \* FY 2009 figures are AAAS estimates of R&D in the FY 2009 omnibus / continuing resolution. R&D includes conduct of R&D and R&D facilities. Data to 1984 are obligations from the NSF Federal Funds survey. GDP figures are from OMB, Budget of the U.S. Government FY 2009.

SEPT. '08 REVISED © 2008 AAAS

## Trends in Research by Agency, FY 1976-2009 (as of 9/08) \*

in billions of constant FY 2008 dollars

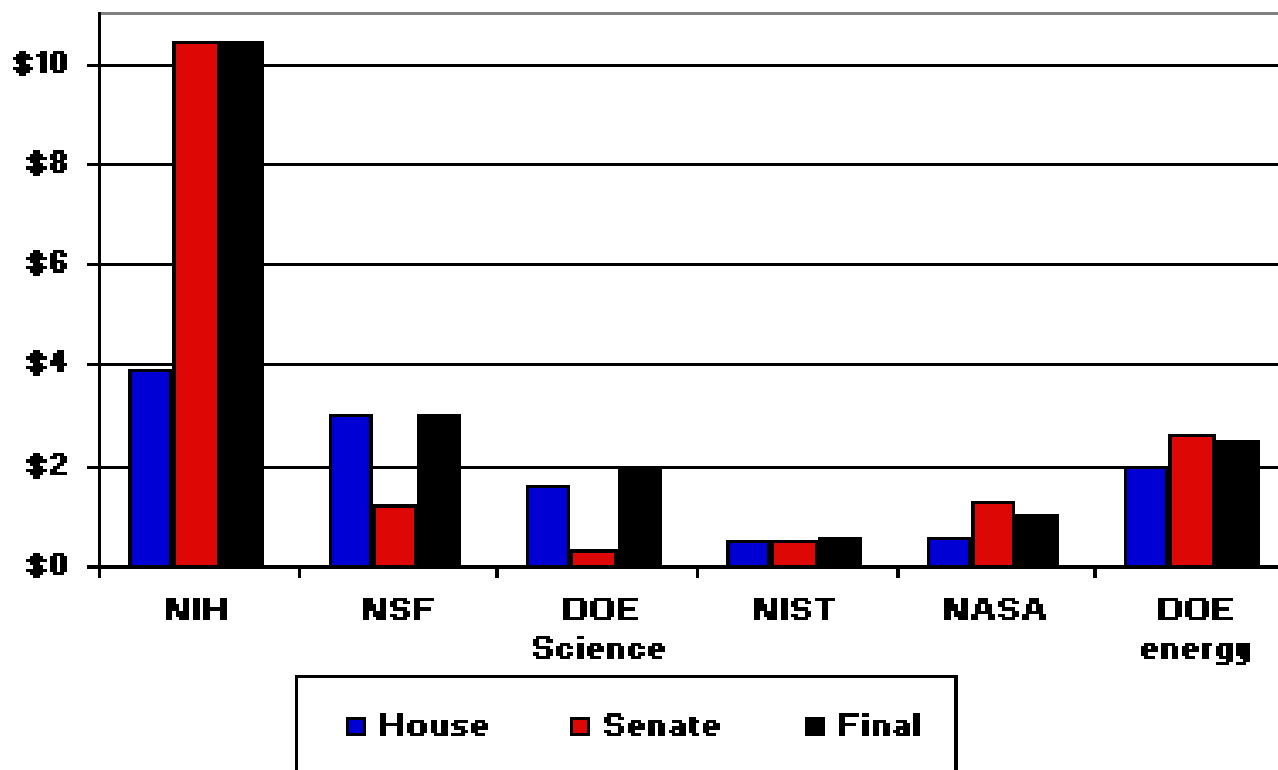


Source: AAAS analyses of R&D in annual AAAS R&D reports.

\* FY 2009 figures are AAAS estimates of R&D in the FY 2009 omnibus / continuing resolution. Research includes basic research and applied research. 1976-1994 figures are NSF data on obligations in the Federal Funds survey.

SEPT. '08 REVISED © 2008 AAAS

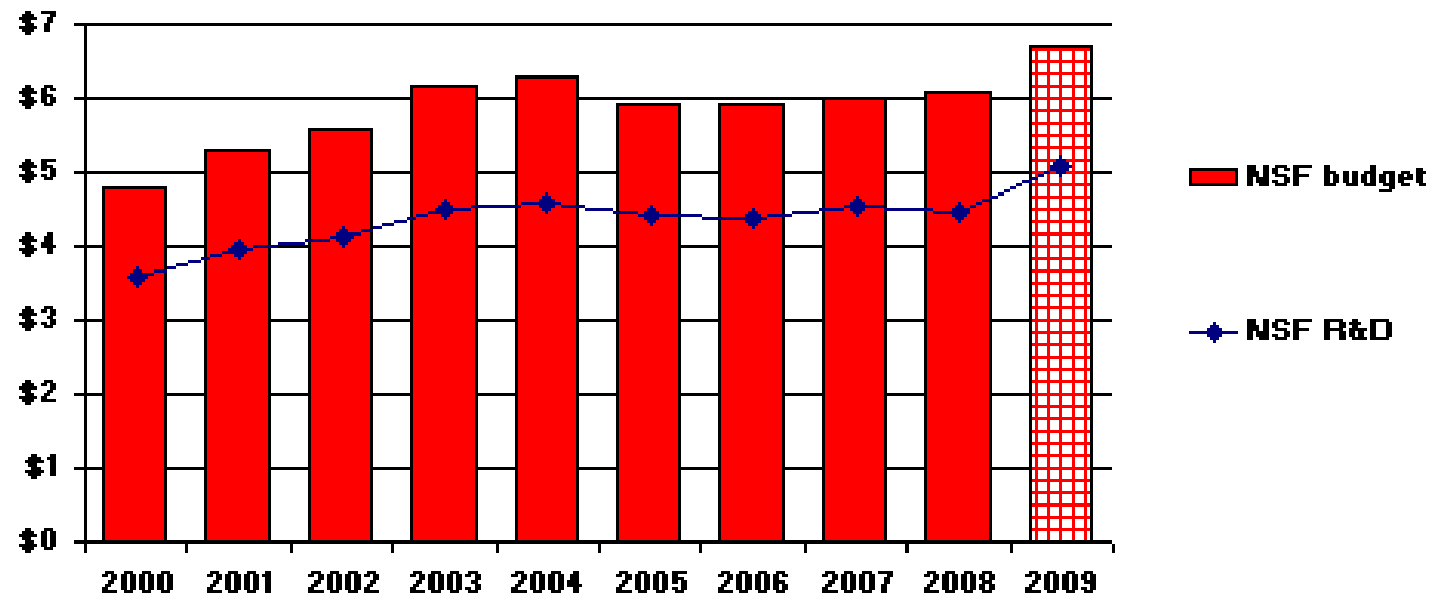
**2009 Supplemental Recovery Funding for R&D  
(House, Senate, and Final bills)  
(budget authority in billions of dollars)**



Source: AAAS analysis of R&D in House, Senate, and Final stimulus appropriations bills (HR 1).  
FEB. '09 © 2009 AAAS

## National Science Foundation Budget, FY 2000-2009

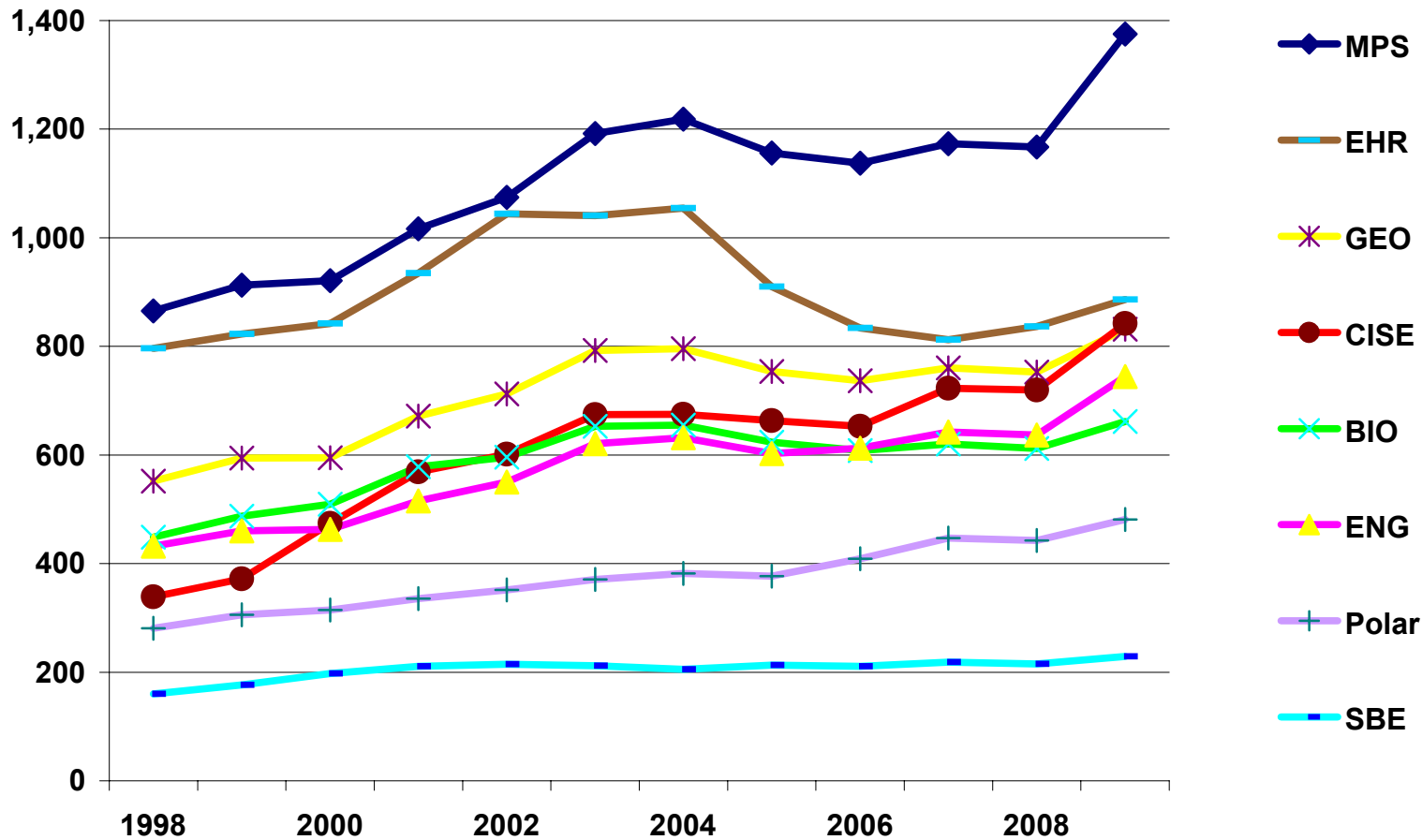
(budget authority in billions of constant FY 2008 dollars)



Source: National Science Foundation, and latest AAAS estimates of FY 2009 budget. FY 2009 is budget request.  
FEB. '08 © 2008 AAAS

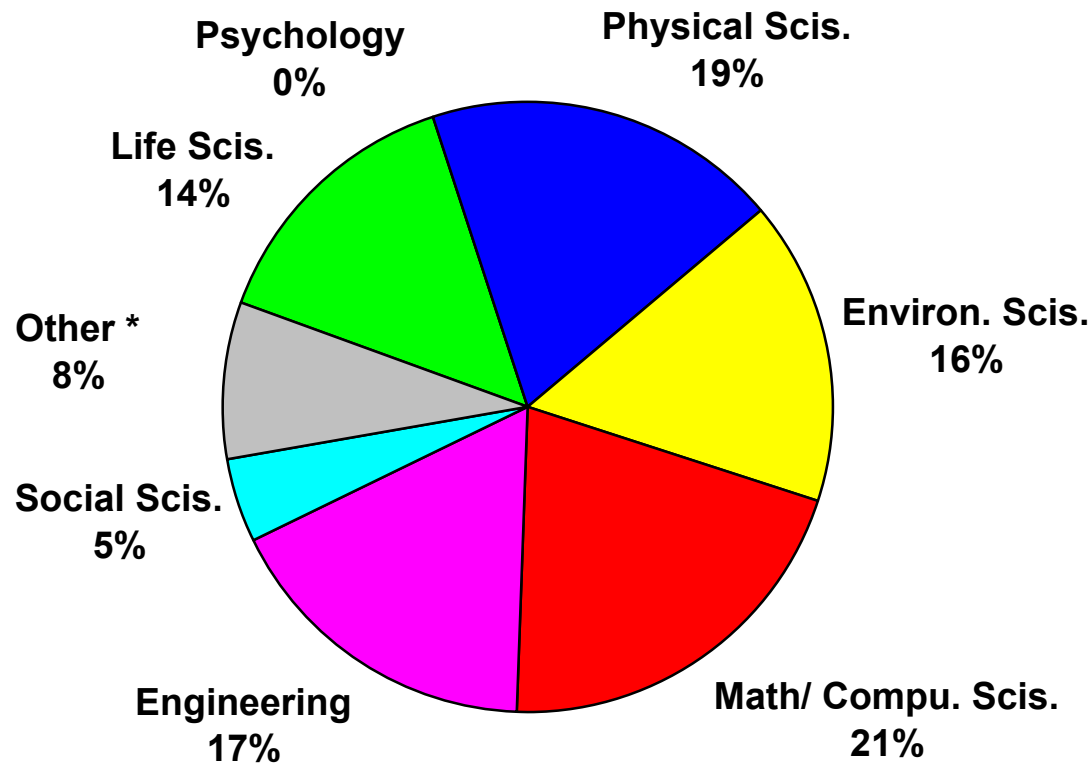
## NSF Budget by Directorate, FY 1998-2009

(budget authority in millions of constant FY 2008 dollars)



Source: National Science Foundation data. FY 2009 figures are President's request. CISE includes new Office of Cyberinfrastructure. R&D and non-R&D components included in directorate budgets. FEB. '08 © 2008 AAAS

## NSF Research in the FY 2007 Budget, by Discipline (preliminary obligations)



**Total NSF  
Research Budget:  
\$4.0 billion**

**(excludes  
development and  
R&D facilities)**

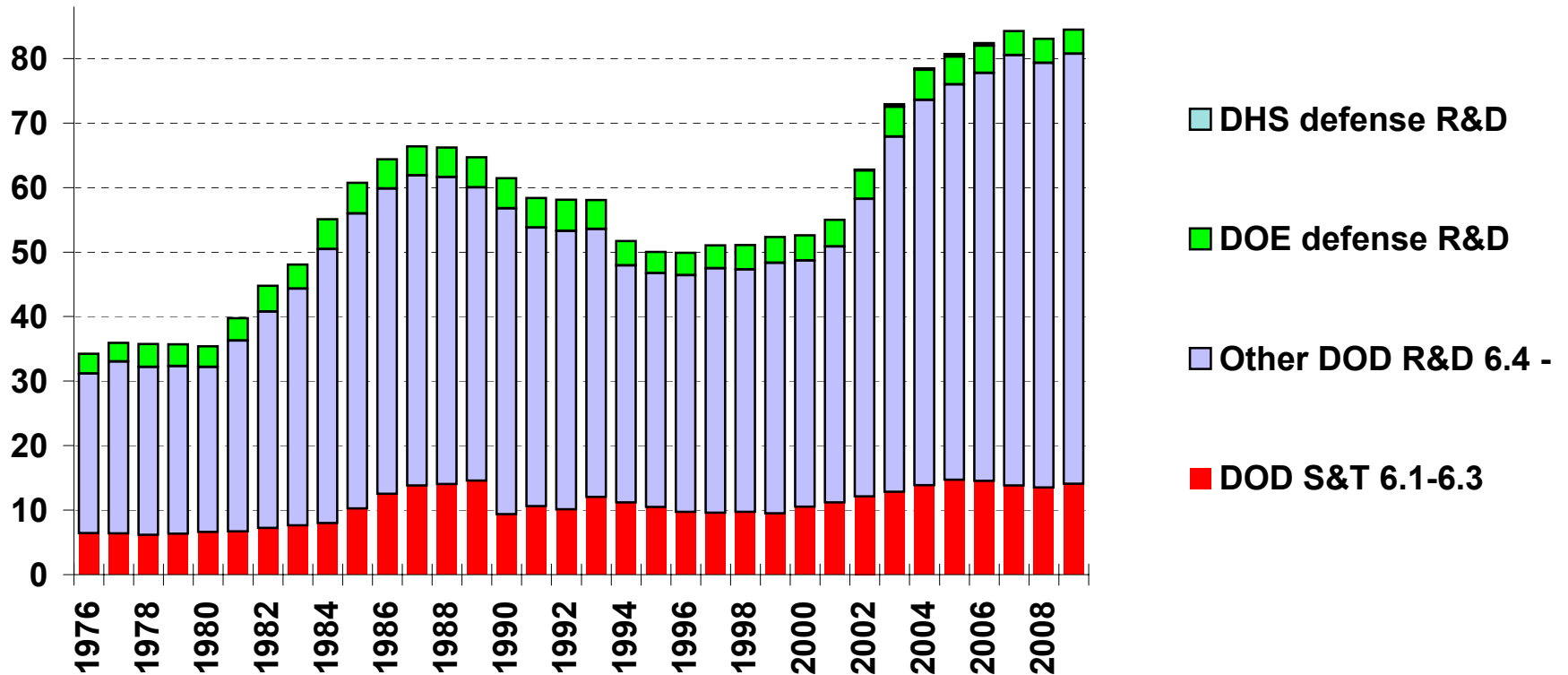
\* - Includes  
sciences not  
classified by  
discipline

Source: National Science Foundation, *Federal Funds for Research and Development FY 2005, 2006, 2007, 2008*.  
JAN. '08 © 2008 AAAS



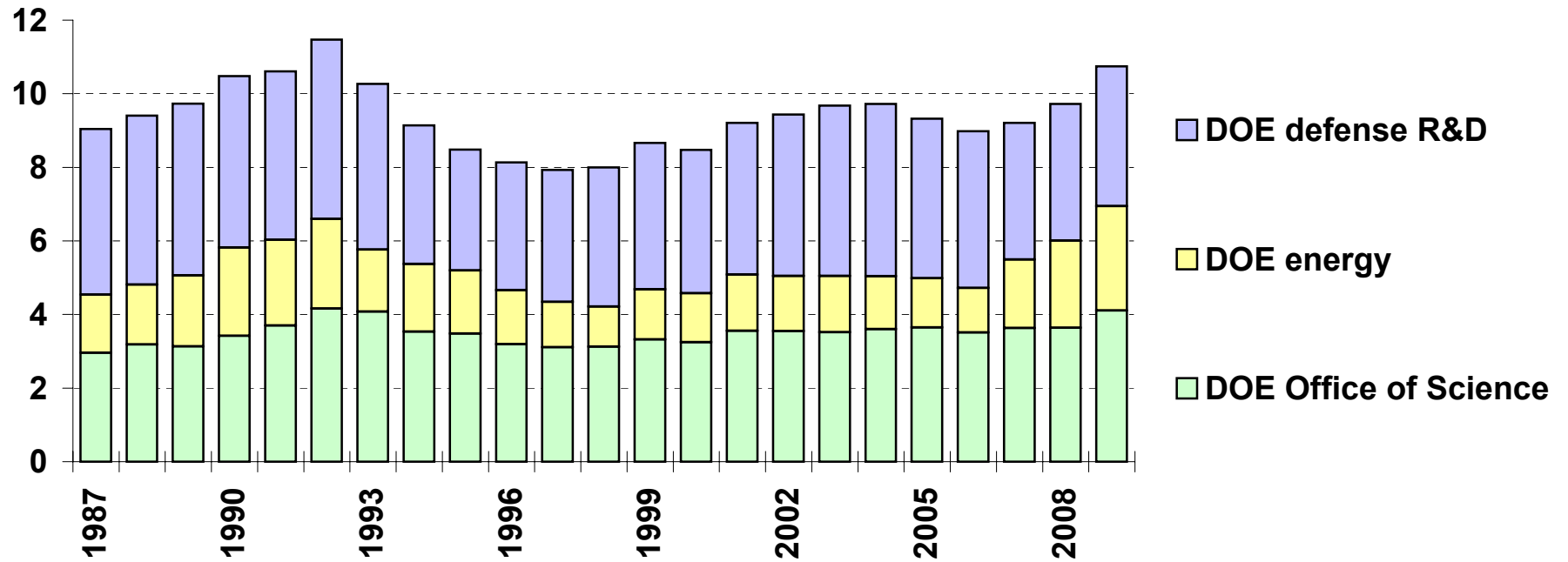
## Trends in Defense R&D, FY 1976-2009 \*

in billions of constant FY 2008 dollars



Source: AAAS analyses of R&D in annual R&D reports. \* - FY 2009 figures are AAAS estimates of final FY 2009 DOD appropriations, and the DOE request. FY 2008 and 2009 figures include enacted supplementals. R&D includes conduct of R&D and R&D facilities. DOD S&T figures are not comparable for all years because of changing definitions.  
 SEPTEMBER '08 REVISED © 2008 AAAS

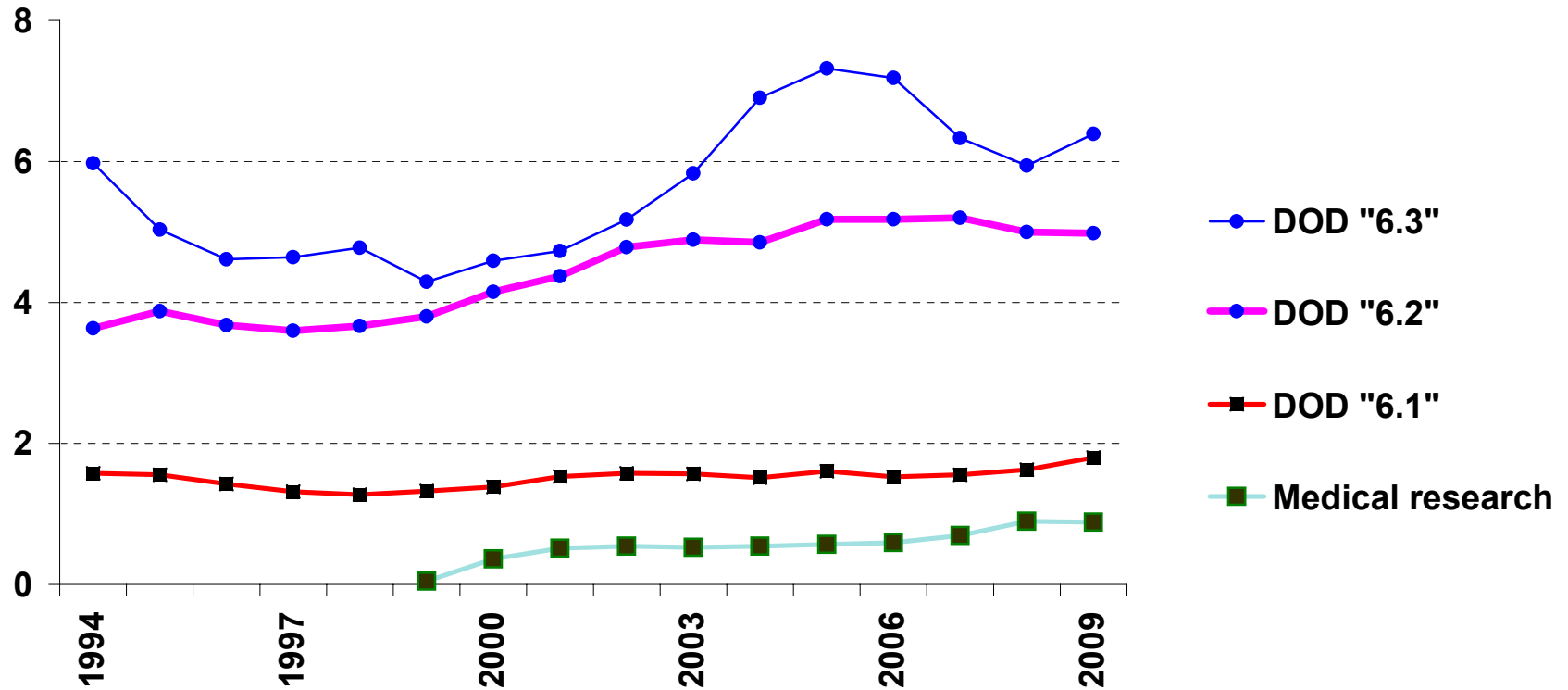
## Trends in DOE R&D, FY 1987- 2009 (Senate)\* in billions of constant FY 2008 dollars



Source: AAAS analyses of R&D in *AAAS Reports VIII-XXXIII*. \* FY 2009 figures are latest AAAS estimates of FY 2009 Senate appropriations.  
R&D includes conduct of R&D and R&D facilities.  
JULY '08 © 2008 AAAS

## Trends in DOD "S&T", FY 1994-2009 (Final) \*

in billions of constant FY 2008 dollars



Source: AAAS analyses of R&D in annual AAAS R&D reports.

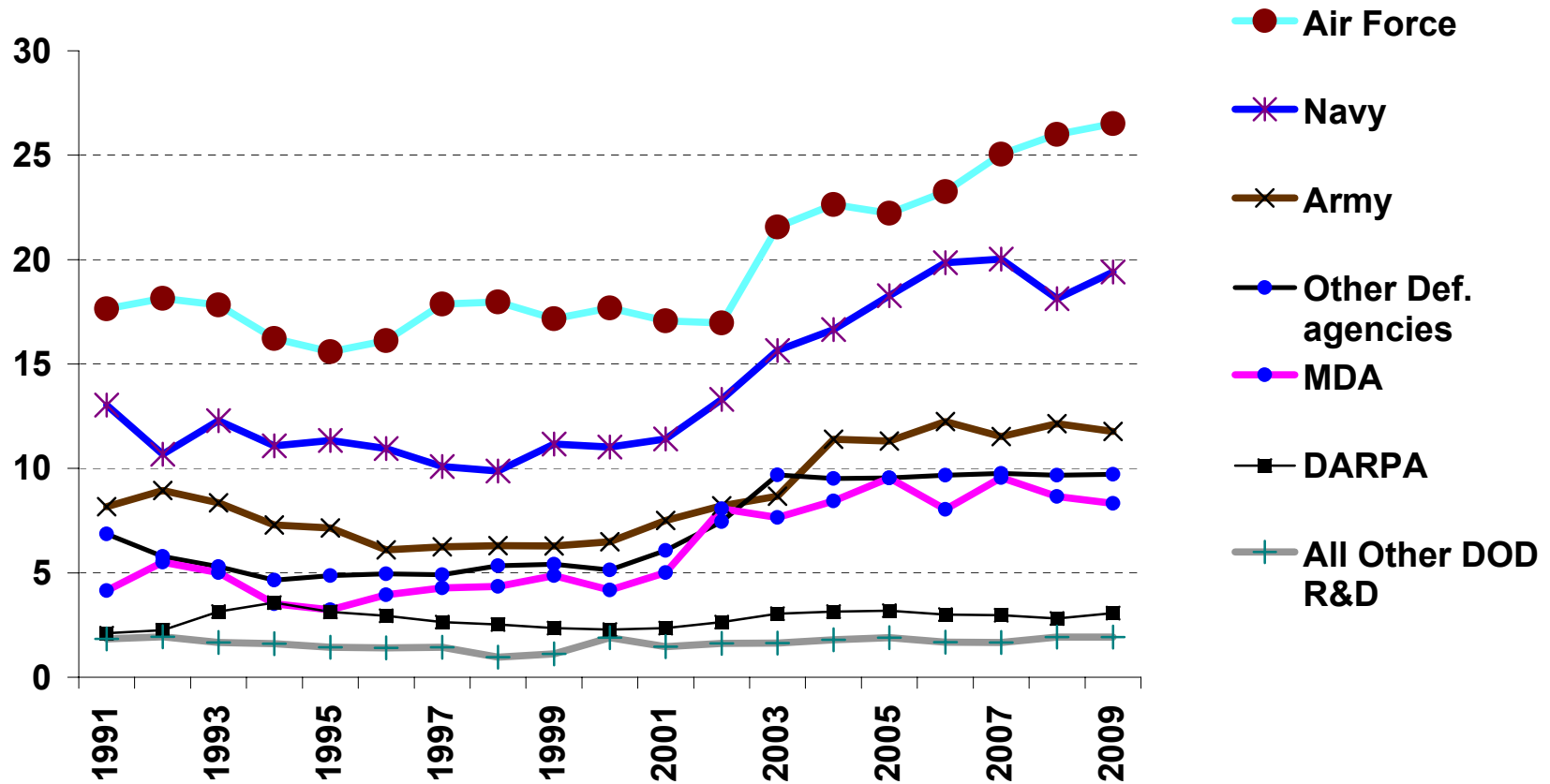
\* - FY 2009 figures are AAAS estimates of final FY 2009 DOD appropriations. Figure include all enacted supplementals.

Medical research appropriated outside RDT&E; appropriated in "6.2" accounts before 1999.

SEPTEMBER '08 © 2008 AAAS

## Trends in DOD R&D by Agency, FY 1991-2009 (Final) \*

in billions of constant FY 2008 dollars



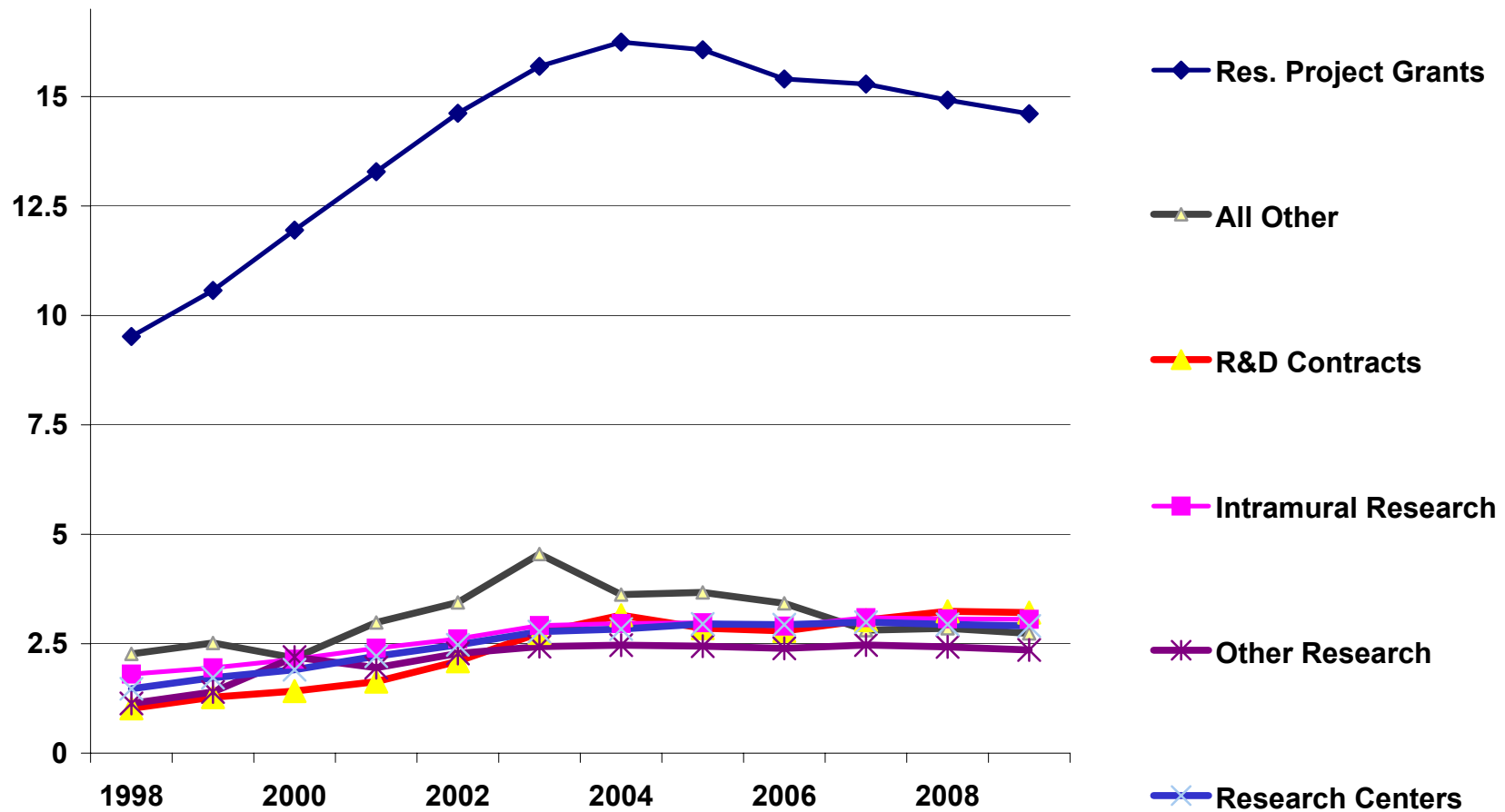
Source: AAAS analyses of R&D in annual AAAS R&D reports.

\* - FY 2009 figures are AAAS estimates of final FY 2009 appropriations. All figures include enacted supplementals.

SEPTEMBER '08 © 2008 AAAS

## NIH Budget by Funding Mechanism, 1998-2009

(budget authority in billions of constant FY 2008 dollars)

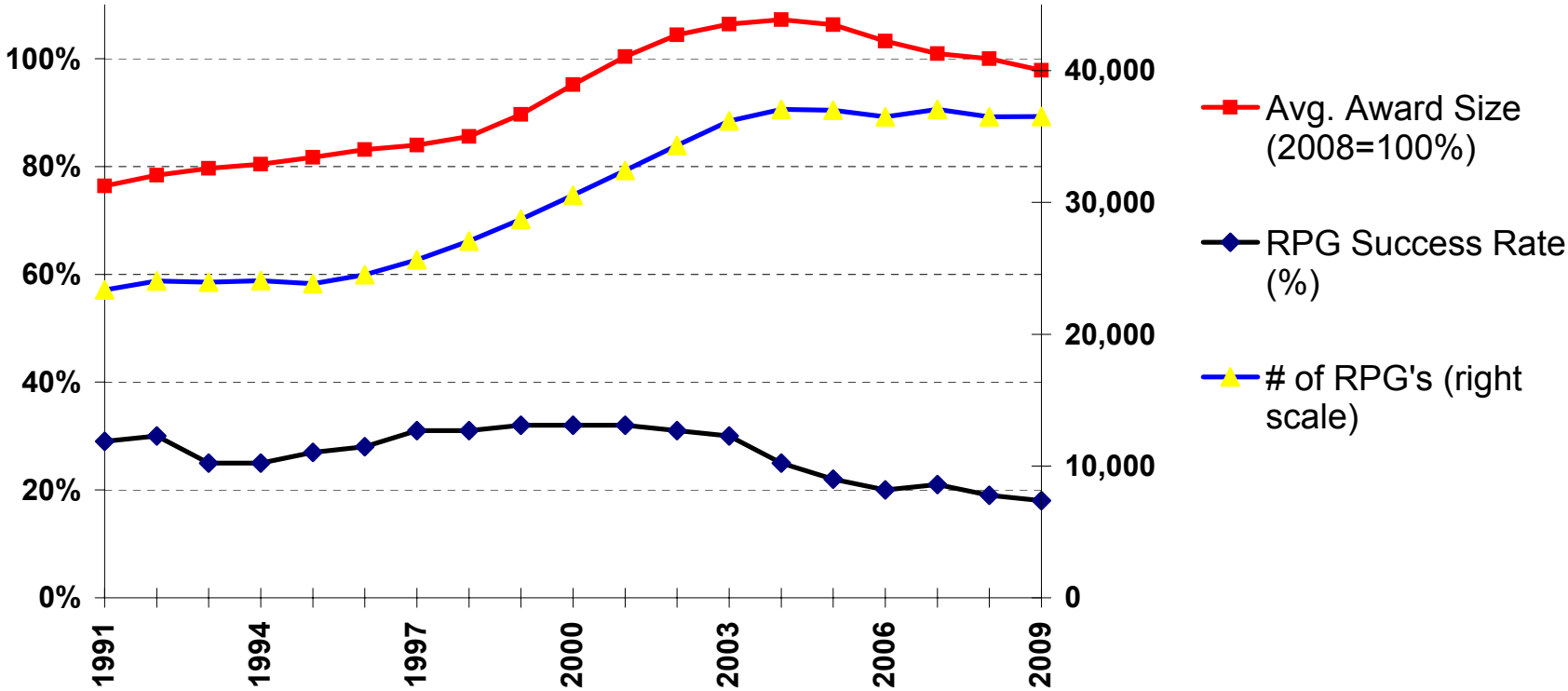


Source: AAAS R&D reports from NIH budget documents 1998-2009. \* 2009 is latest AAAS estimates of FY 2009 request.

Adjusted for inflation using OMB's GDP deflators.

FEB. '08 © 2008 AAAS

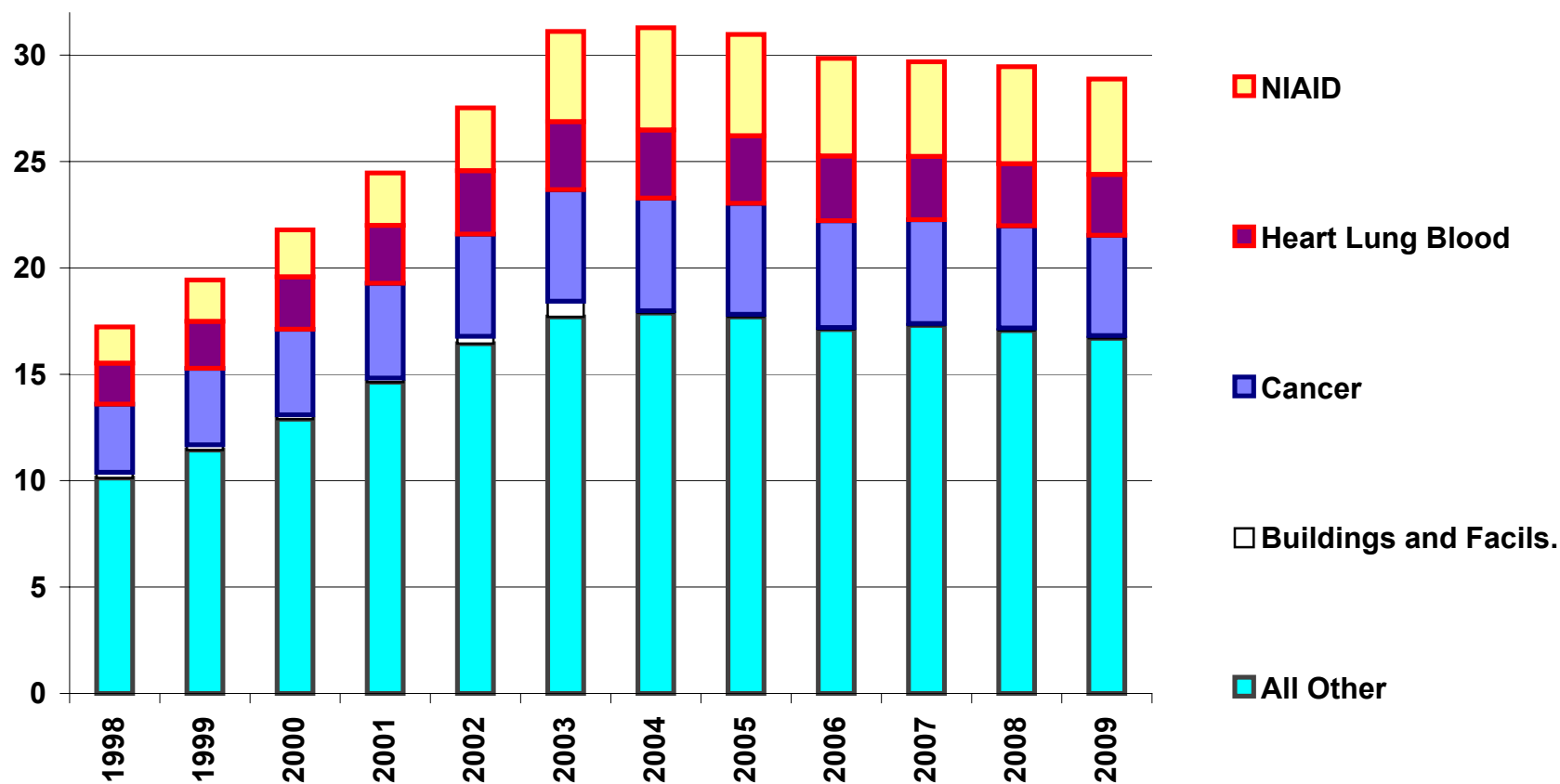
# National Institutes of Health Research Project Grants



Source: NIH agency budget justification for FY 2009.  
 Average proposed award size \$408,800 in FY 2008. Other  
 years adjusted for inflation.  
 FEB. '08 © 2008 AAAS

## National Institutes of Health Budget by Institute, 1998-2009 \*

(budget authority in billions of constant FY 2008 dollars)



Source: AAAS R&D reports from NIH budget documents 1998-2009. \* 2009 is latest AAAS estimates of FY 2009 request. Adjusted for inflation using OMB's GDP deflators.

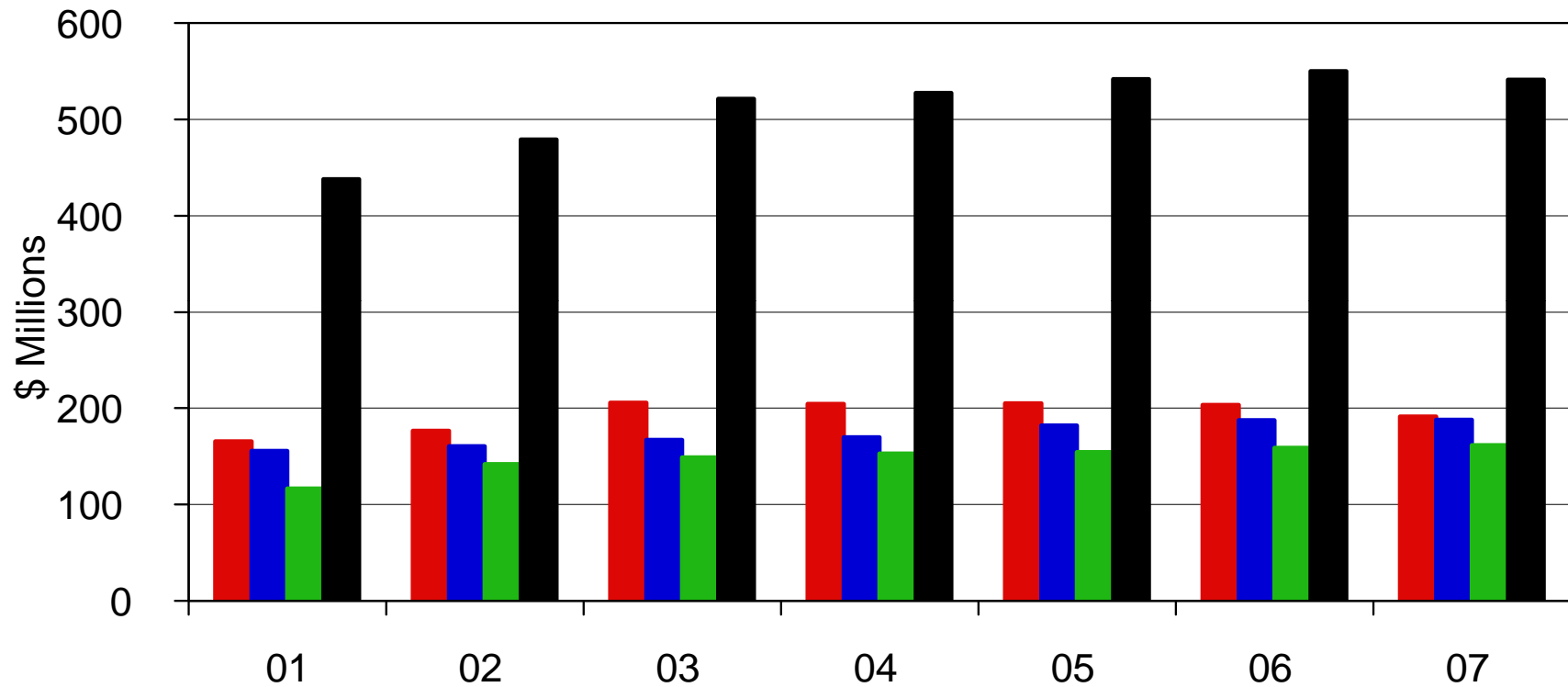
FEB. '08 © 2008 AAAS

# Cornell's Sponsored Research FY 2007

Selected slides originally presented at the October 2008 ECC meeting by  
Robert Buhrman, Senior Vice Provost for Research



# Sponsored Research Funding

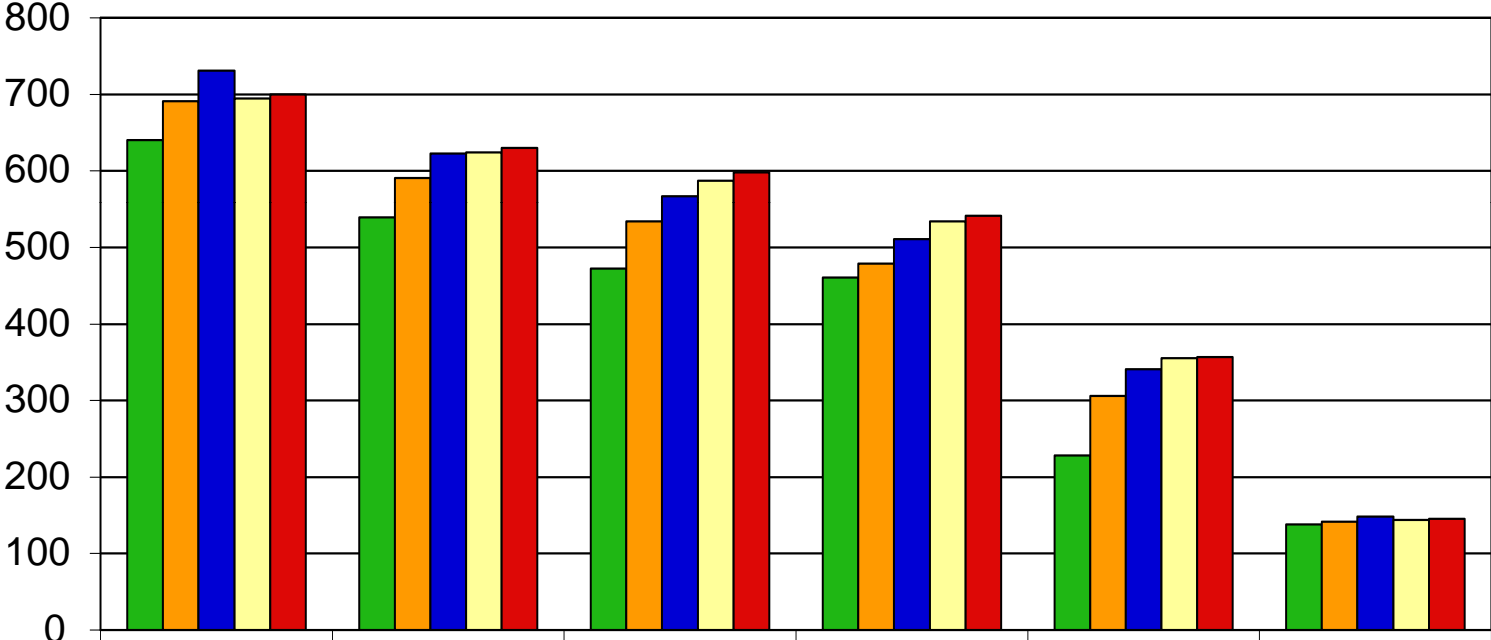


**Constant 2007 dollars**

- Endowed
- Contract
- Weill
- Total

# TOTAL SPONSORED RESEARCH EXPENDITURES – 5 YEAR

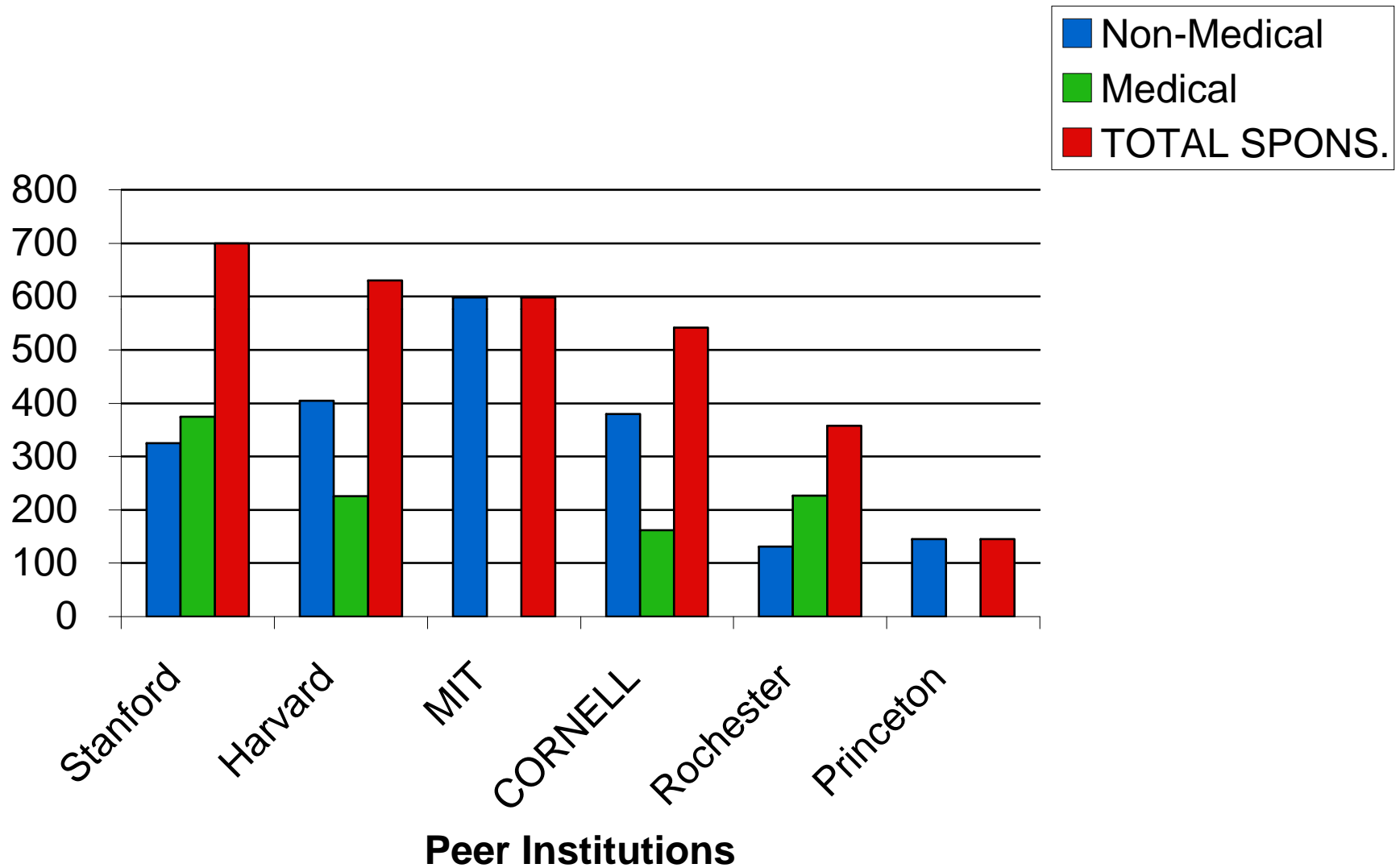
- 2003
- 2004
- 2005
- 2006
- 2007



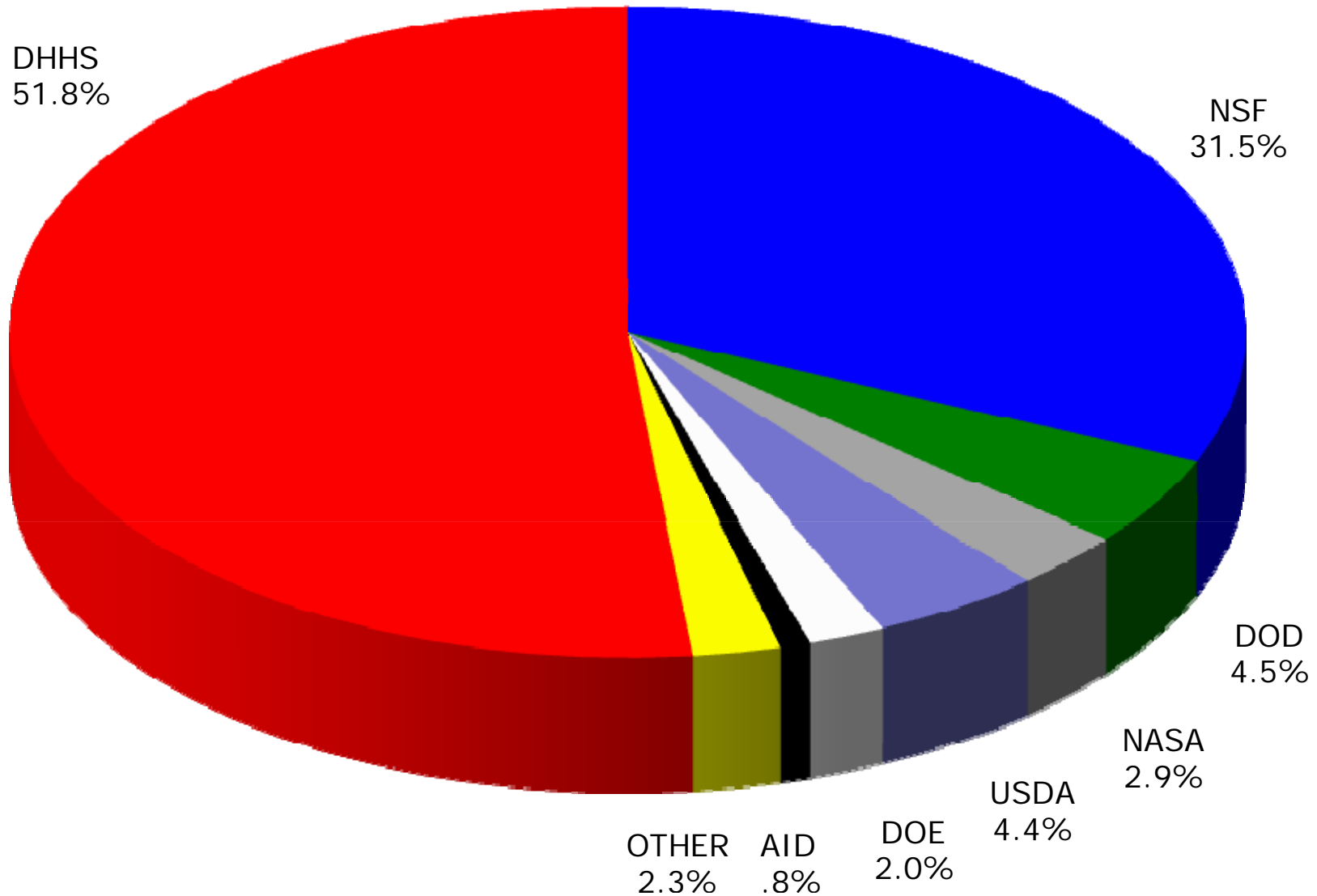
Stanford Harvard MIT CORNELL Rochester Princeton

Peer Institution

# TOTAL SPONSORED RESEARCH EXPENDITURES - FY 2007

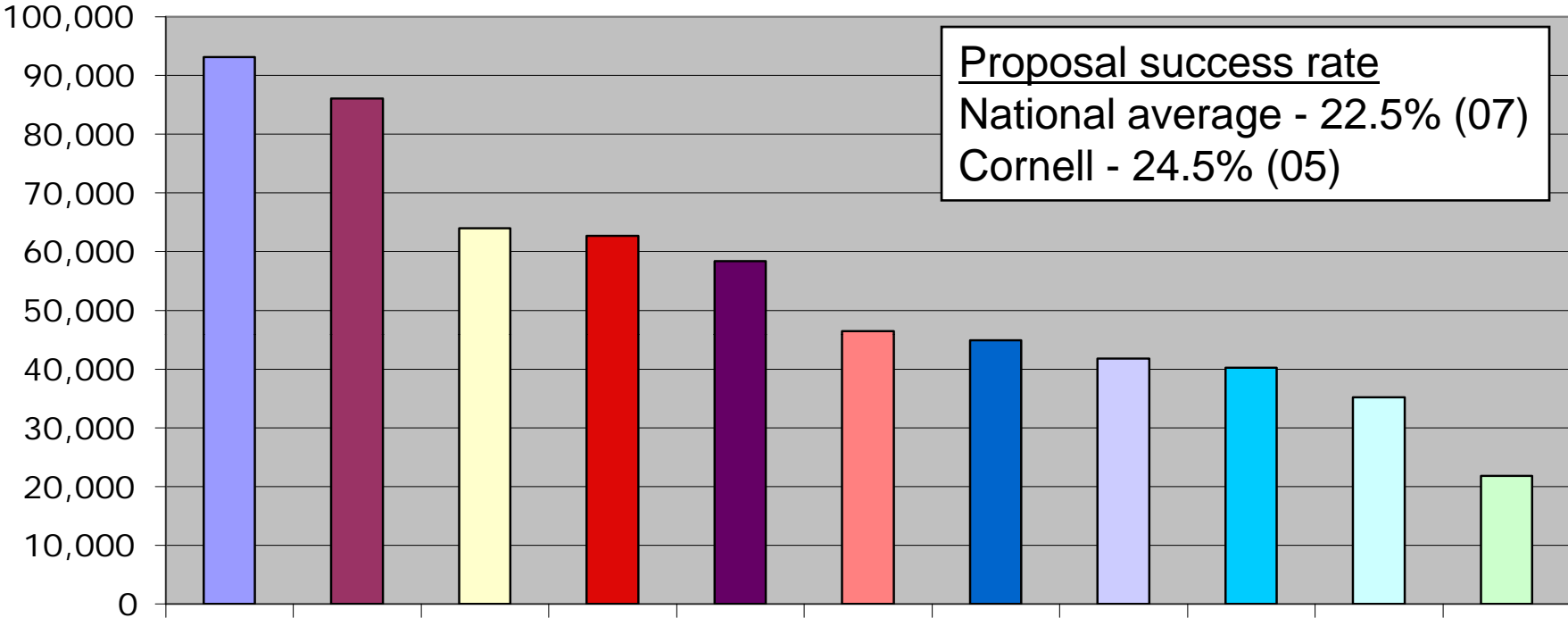


# Distribution of Cornell's Federally Sponsored Research - 2008



# NIH Funding FY07 Non-Medical

\$K



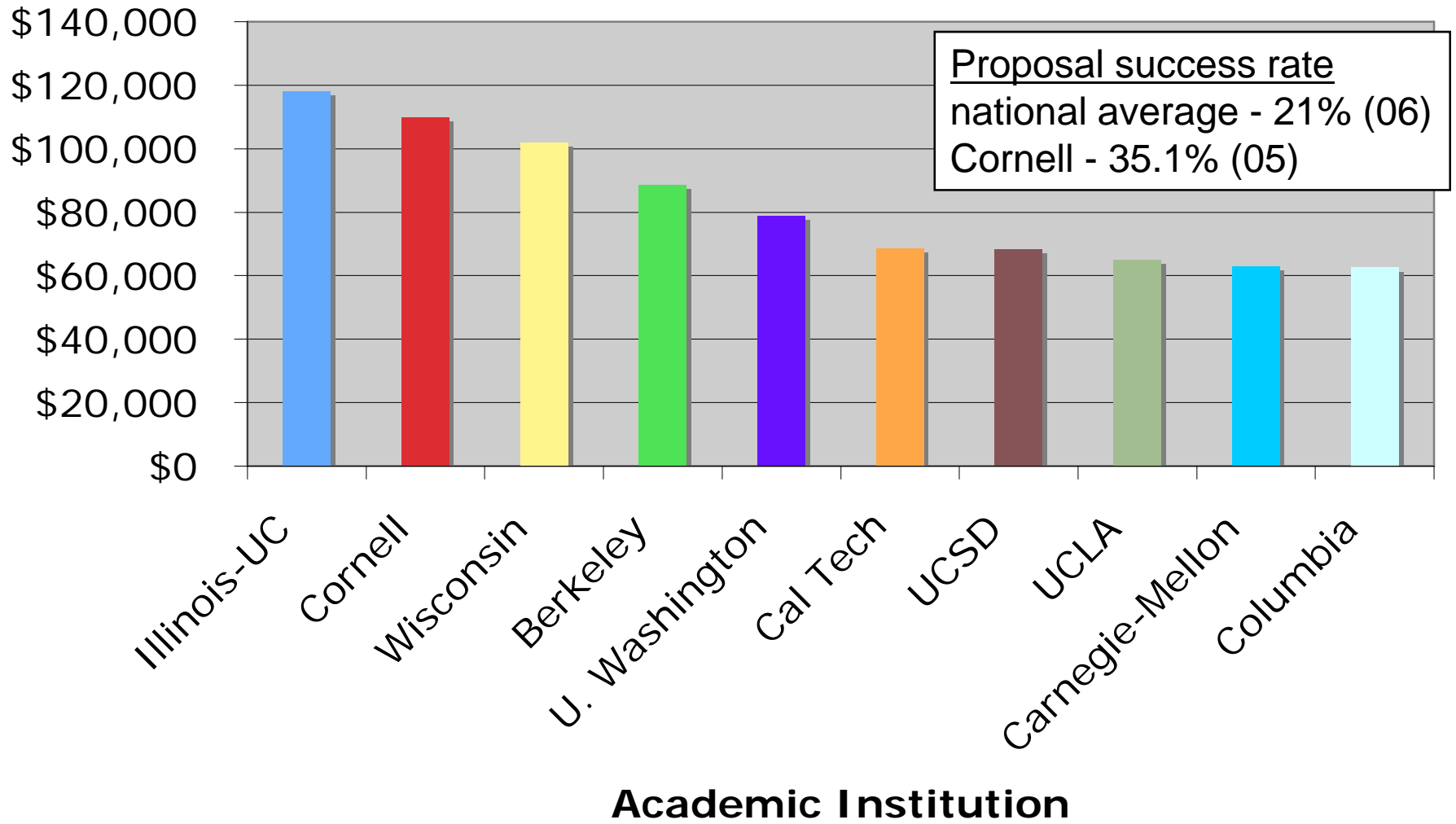
Proposal success rate  
National average - 22.5% (07)  
Cornell - 24.5% (05)

MIT  
UC Berkeley  
U. Illinois - UC  
Cornell  
Penn  
Harvard  
Columbia  
Princeton  
Stanford  
Yale  
Chicago

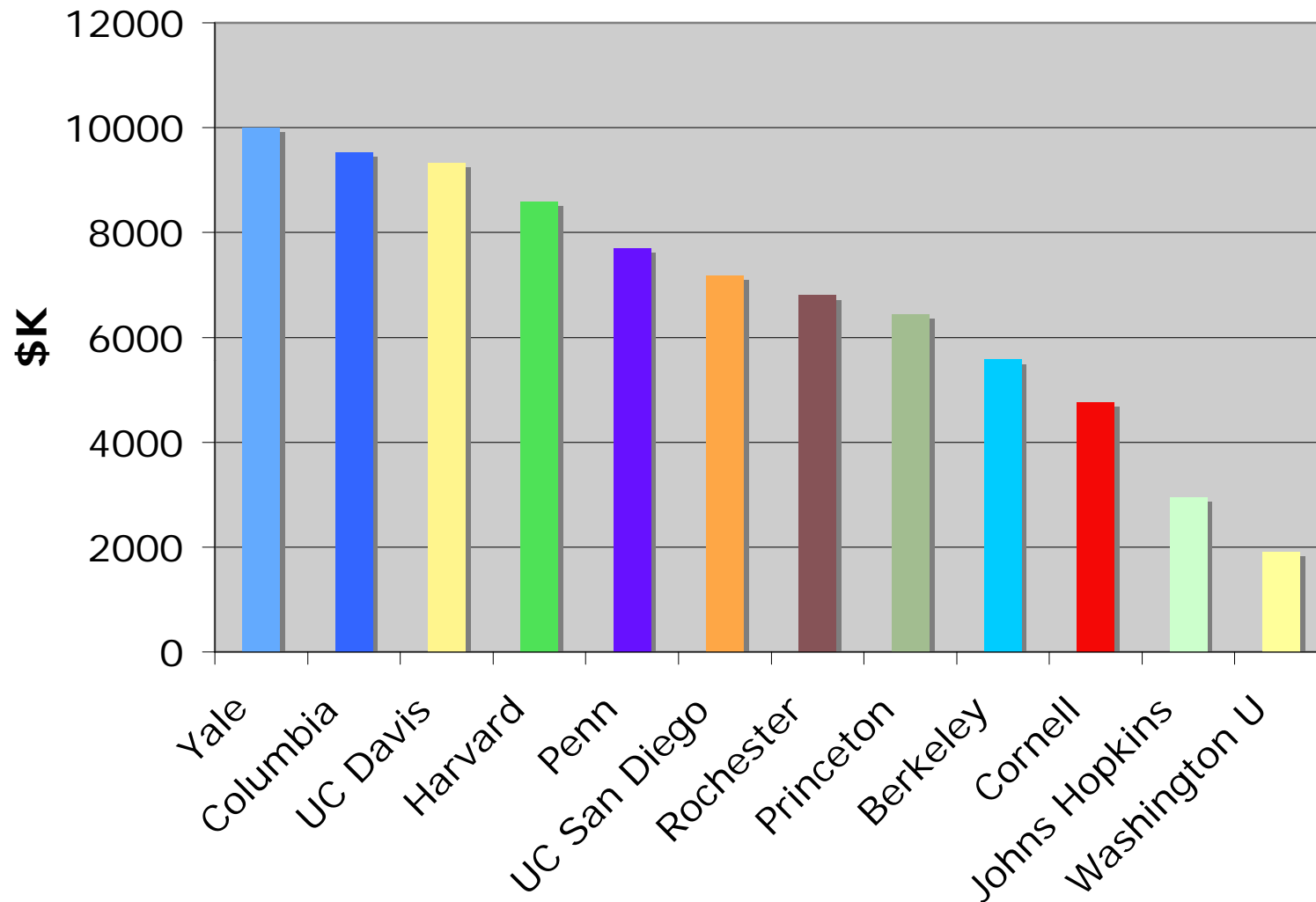
## Selected Academic Institutions

# Ranked NSF Funding - FY07

\$K



## DoE Funding - Selected Universities FY 07



MIT - \$54.7M; Stanford - \$15.7M; Illinois UC - \$12.5M

College of Engineering  
Sponsored Research  
FY 2007



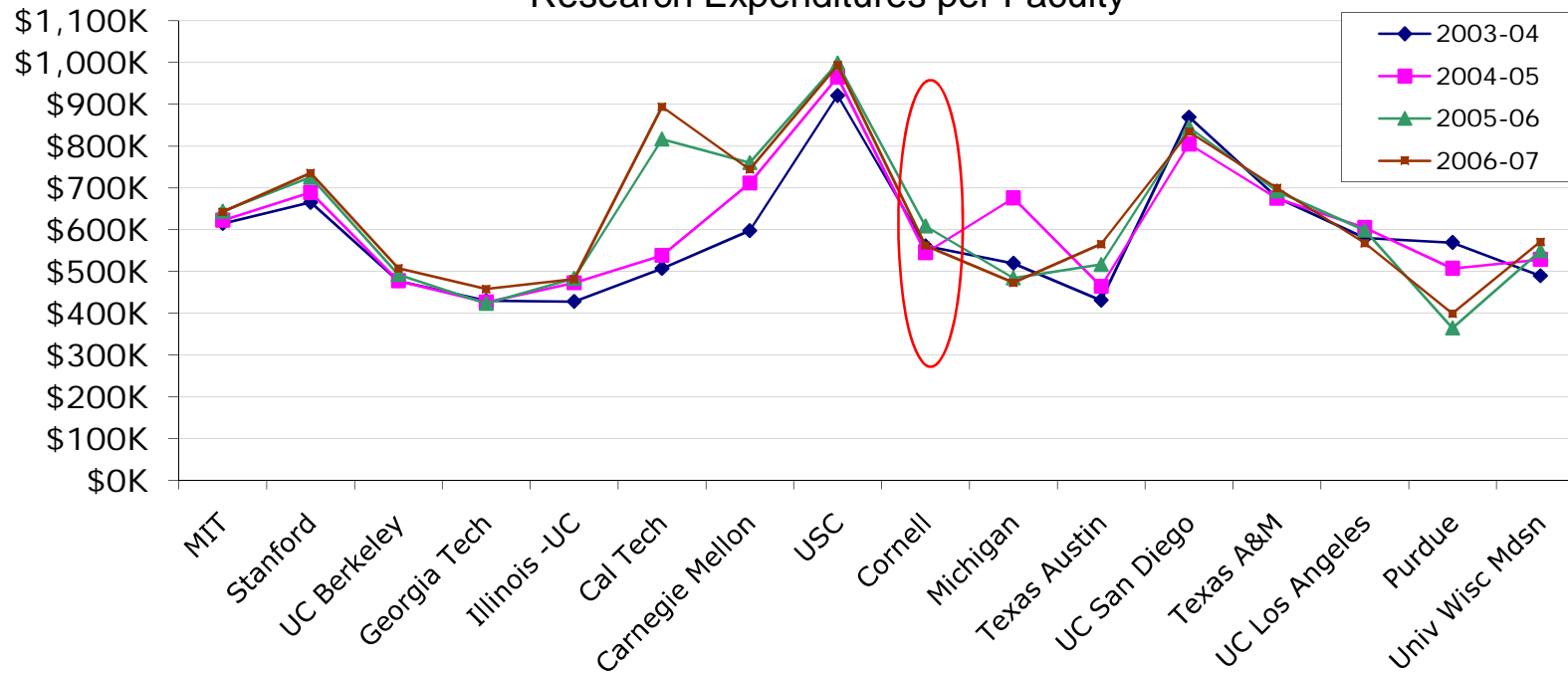
2006-2007 ASEE Reported Research Expenditures by Source - USNWR Top 15 Schools Ranked in 2008

USNWR Rank	School	Federal Funds	Foreign Funds	Individual Funds	Industry Funds	Local Funds	Non-profit Funds	State Funds	Total Funds	Total # Faculty
1	MIT	171,815,000	4,956,000	0	46,175,000	0	13,925,000	838,000	237,709,000	371
2	Stanford	102,989,335	5,366,529	5,124,442	13,121,842	0	23,723,357	1,946,867	152,272,372	228
3	Berkeley	64,431,000	0	3,201,000	15,653,000	633,000	20,021,000	16,363,000	120,302,000	241
4	Georgia Tech	107,915,000	1,383,000	7,167,000	32,962,000	24,000	6,608,000	63,345,000	219,404,000	442
5	Illinois-UC	153,272,621	0	0	35,944,775	1,100,634	0	4,704,329	195,022,359	417
6	Cal Tech	70,939,414	0	12,547	0	0	14,009,259	0	84,961,220	100
7	Carnegie Mellon	129,391,180	10,718,400	0	13,994,004	54,600	1,228,280	6,151,542	161,538,006	134
8	USC	120,780,476	0	9,426,194	9,816,388	0	23,822,560	1,108,248	164,953,866	164
9	Cornell	78,586,191	150,549	8,442,920	8,190,278	67,764	7,486,275	5,068,658	107,992,635	243
9	Michigan	118,958,000	35,000	1,314,000	15,774,000	0	2,023,000	9,669,996	147,773,996	320
11	UC San Diego	84,260,291	0	0	39,400,968	0	200,793	17,124,180	140,986,232	179
11	Texas-Austin	83,606,828	209,284	0	24,057,517	360,026	14,483,893	12,501,399	135,218,947	251
13	UCLA	46,743,343	0	0	21,286,531	0	0	18,262,778	86,292,652	155
13	Texas A&M	71,699,000	947,000	0	35,605,000	88,000	8,459,000	88,913,000	205,711,000	349
15	Purdue	66,037,038	565,181	9,237,656	33,403,099	0	979,521	16,363,452	126,585,947	317
15	Wisconsin-Mdsn	74,017,500	0	0	23,172,840	0	4,835,430	10,946,230	112,972,000	190

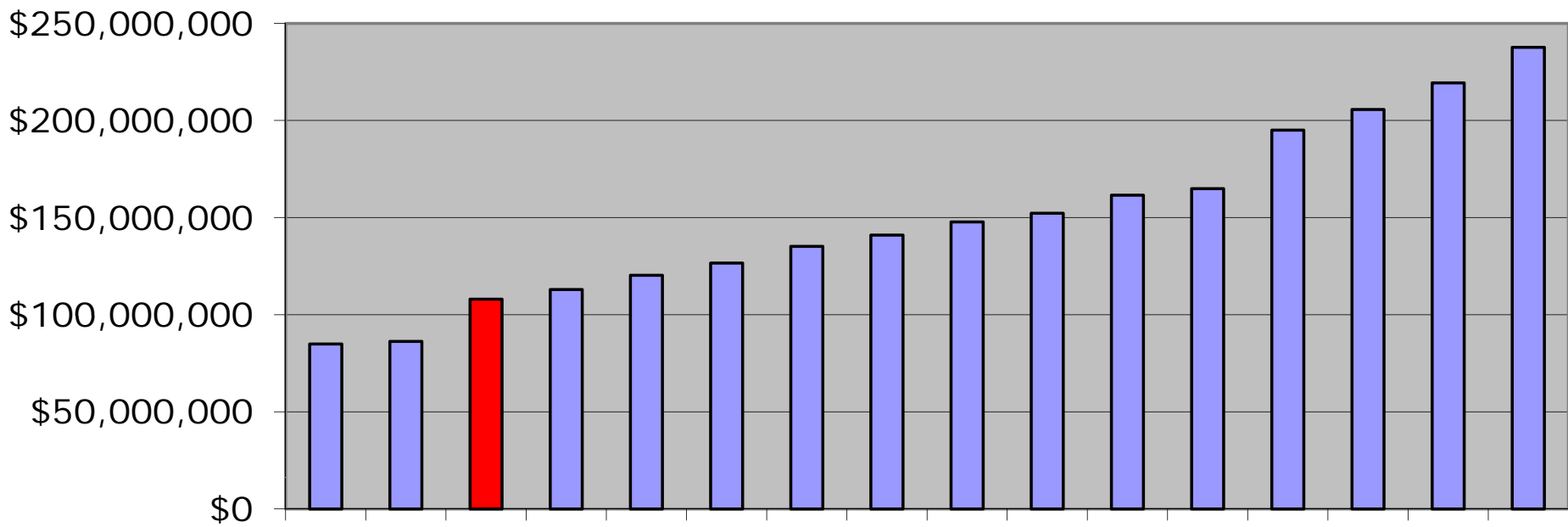
School	Federal Funds	Foreign Funds	Individual	Industry Funds	Local Funds	Non-profit Funds	State Funds
MIT	72.28%	2.08%	0.00%	19.43%	0.00%	5.86%	0.35%
Stanford	67.63%	3.52%	3.37%	8.62%	0.00%	15.58%	1.28%
Berkeley	53.56%	0.00%	2.66%	13.01%	0.53%	16.64%	13.60%
Georgia Tech	49.19%	0.63%	3.27%	15.02%	0.01%	3.01%	28.87%
Illinois-UC	78.59%	0.00%	0.00%	18.43%	0.56%	0.00%	2.41%
Cal Tech	83.50%	0.00%	0.01%	0.00%	0.00%	16.49%	0.00%
Carnegie Mellon	80.10%	6.64%	0.00%	8.66%	0.03%	0.76%	3.81%
USC	73.22%	0.00%	5.71%	5.95%	0.00%	14.44%	0.67%
Cornell	72.77%	0.14%	7.82%	7.58%	0.06%	6.93%	4.69%
Michigan	80.50%	0.02%	0.89%	10.67%	0.00%	1.37%	6.54%
UC San Diego	59.76%	0.00%	0.00%	27.95%	0.00%	0.14%	12.15%
Texas-Austin	61.83%	0.15%	0.00%	17.79%	0.27%	10.71%	9.25%
UCLA	54.17%	0.00%	0.00%	24.67%	0.00%	0.00%	21.16%
Texas A&M	34.85%	0.46%	0.00%	17.31%	0.04%	4.11%	43.22%
Purdue	52.17%	0.45%	7.30%	26.39%	0.00%	0.77%	12.93%
Wisconsin-Mdsn	65.52%	0.00%	0.00%	20.51%	0.00%	4.28%	9.69%

2008 USNWR Rank*	University	2003-04	2004-05	2005-06	2006-07
1	MIT	\$614.9	\$622.7	\$644.3	\$642.5
2	Stanford	\$665.4	\$689.3	\$725.8	\$735.6
3	UC Berkeley	\$477.8	\$477.8	\$493.0	\$507.6
4	Georgia Tech	\$430.5	\$426.6	\$423.4	\$458.0
5	Illinois -UC	\$428.1	\$473.0	\$483.4	\$482.0
6	Cal Tech	\$507.3	\$538.5	\$817.2	\$894.2
7	Carnegie Mellon	\$597.9	\$711.7	\$760.6	\$744.4
9	USC	\$921.5	\$965.4	\$999.0	\$993.7
9	<b>Cornell</b>	<b>\$561.3</b>	<b>\$544.8</b>	<b>\$608.7</b>	<b>\$562.3</b>
9	Michigan	\$519.7	\$676.0	\$484.2	\$473.6
11	Texas Austin	\$431.5	\$464.6	\$516.9	\$565.8
11	UC San Diego	\$869.8	\$805.2	\$845.0	\$834.2
13	Texas A&M	\$676.8	\$675.4	\$692.8	\$699.7
13	UC Los Angeles	\$580.5	\$605.1	\$598.7	\$567.7
15	Purdue	\$569.2	\$507.6	\$364.8	\$399.5
15	Univ Wisc Mdsn	\$489.7	\$528.9	\$549.2	\$570.9

Research Expenditures per Faculty



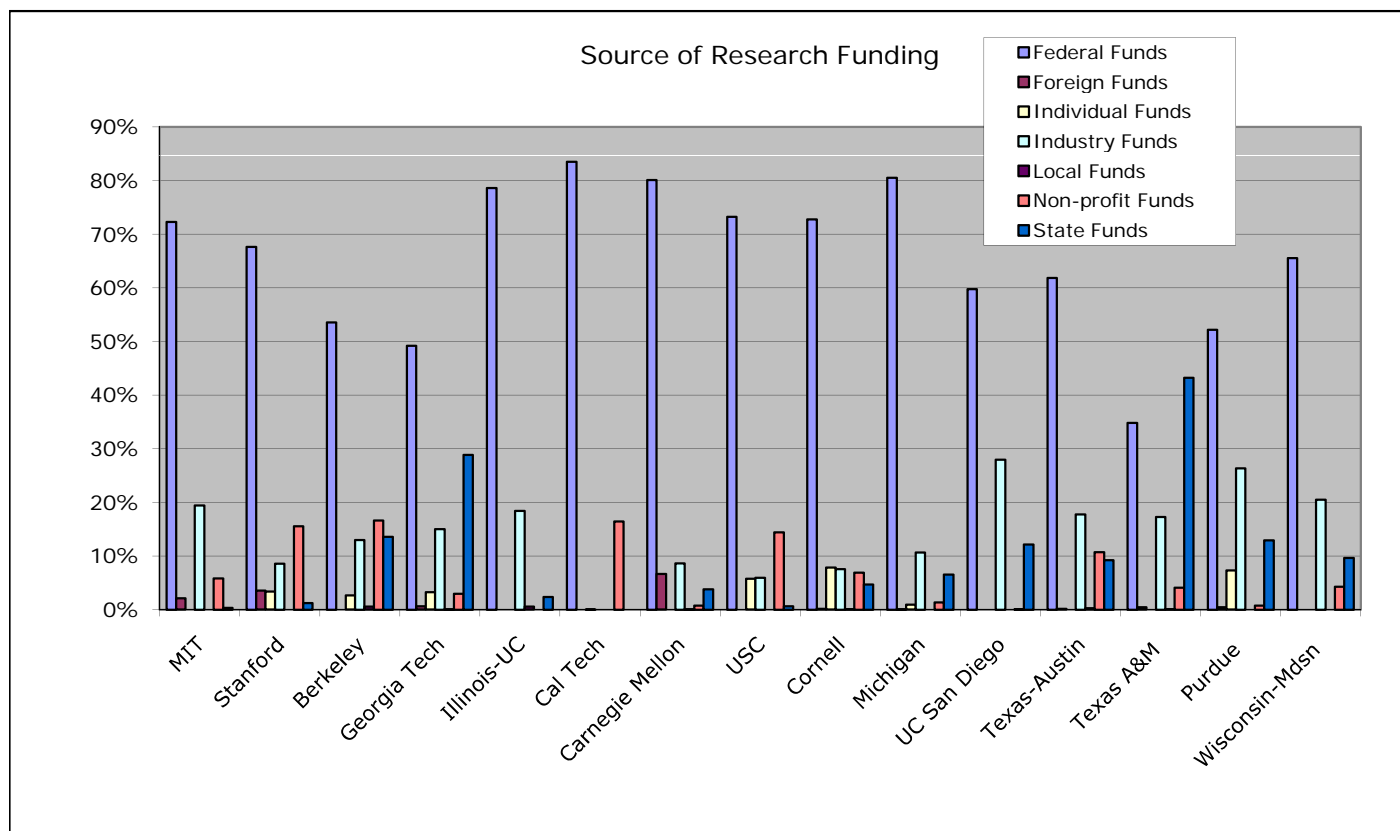
### Total Research Expenditures



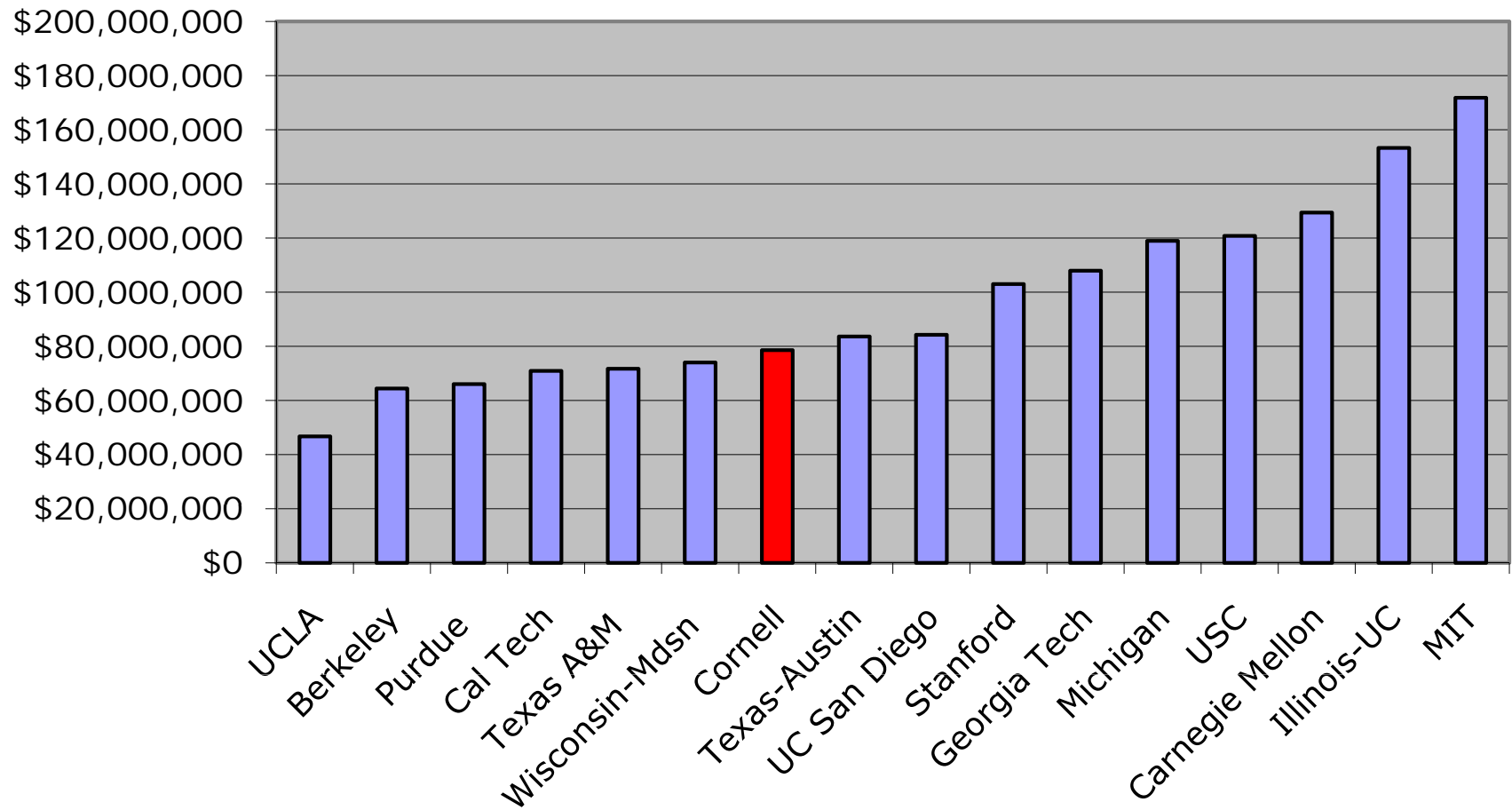
Cal Tech  
UCLA  
Cornell  
Wisconsin-Mdsn  
Berkeley  
Purdue  
Texas-Austin  
UC San Diego  
Michigan  
Stanford  
Carnegie Mellon  
USC  
Illinois-UC  
Texas A&M  
Georgia Tech  
MIT

Sources of Research Expenditures - Top 15 USNWR Schools Ranked in 2008

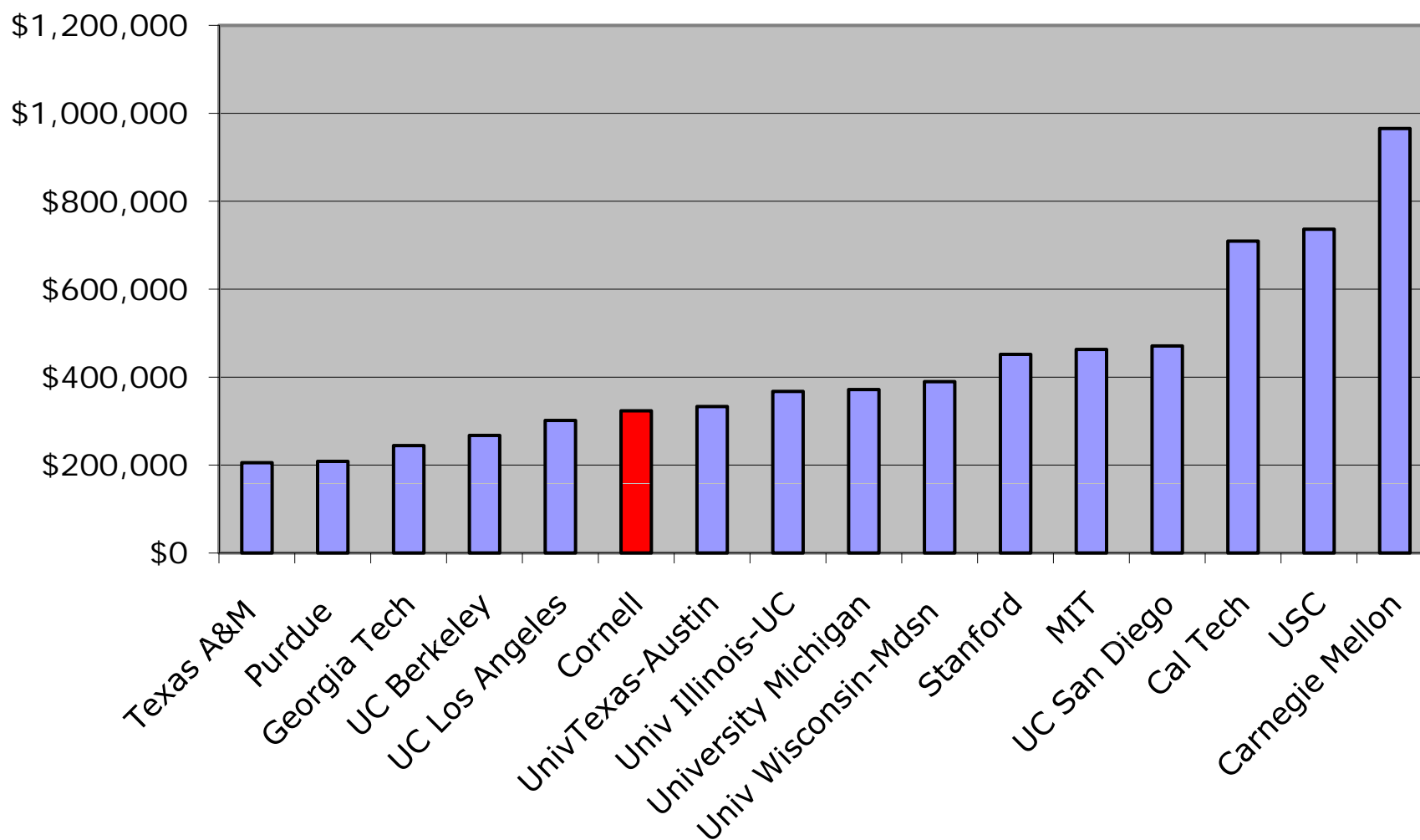
School	Federal Funds	Foreign Funds	Individual Funds	Industry Funds	Local Funds	Non-profit Funds	State Funds
MIT	72.28%	2.08%	0.00%	19.43%	0.00%	5.86%	0.35%
Stanford	67.63%	3.52%	3.37%	8.62%	0.00%	15.58%	1.28%
Berkeley	53.56%	0.00%	2.66%	13.01%	0.53%	16.64%	13.60%
Georgia Tech	49.19%	0.63%	3.27%	15.02%	0.01%	3.01%	28.87%
Illinois-UC	78.59%	0.00%	0.00%	18.43%	0.56%	0.00%	2.41%
Cal Tech	83.50%	0.00%	0.01%	0.00%	0.00%	16.49%	0.00%
Carnegie Mellon	80.10%	6.64%	0.00%	8.66%	0.03%	0.76%	3.81%
USC	73.22%	0.00%	5.71%	5.95%	0.00%	14.44%	0.67%
Cornell	72.77%	0.14%	7.82%	7.58%	0.06%	6.93%	4.69%
Michigan	80.50%	0.02%	0.89%	10.67%	0.00%	1.37%	6.54%
UC San Diego	59.76%	0.00%	0.00%	27.95%	0.00%	0.14%	12.15%
Texas-Austin	61.83%	0.15%	0.00%	17.79%	0.27%	10.71%	9.25%
Texas A&M	34.85%	0.46%	0.00%	17.31%	0.04%	4.11%	43.22%
Purdue	52.17%	0.45%	7.30%	26.39%	0.00%	0.77%	12.93%
Wisconsin-Mdsn	65.52%	0.00%	0.00%	20.51%	0.00%	4.28%	9.69%



## Funding Source: Federal Expenditures



## Federal Fund Expenditures per Faculty Member

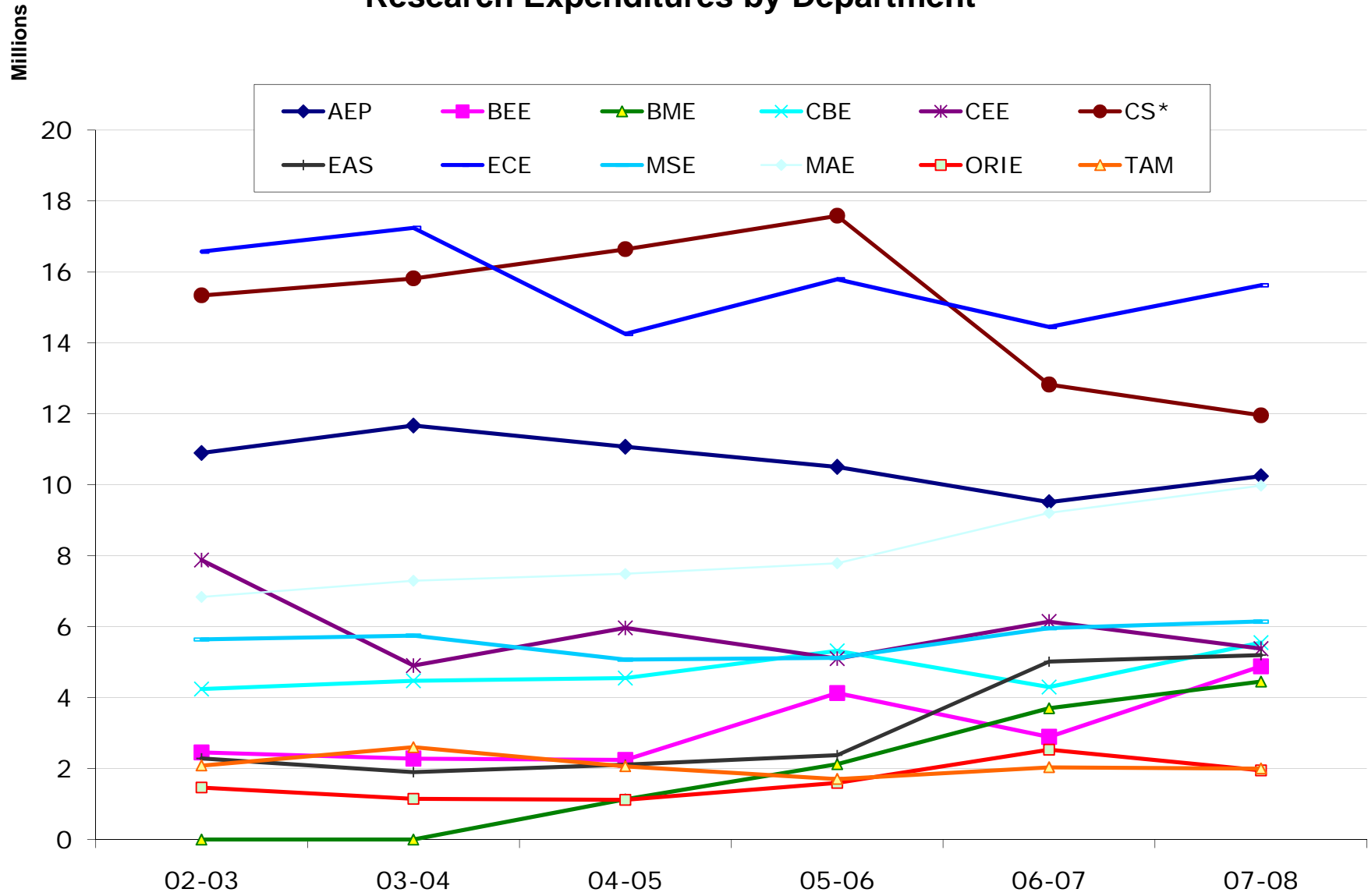


### Research Expenditures by Department

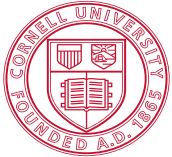
<b>Departments</b>	<b>02-03</b>	<b>03-04</b>	<b>04-05</b>	<b>05-06</b>	<b>06-07</b>	<b>07-08</b>
AEP	10,901,935	11,672,973	11,075,102	10,508,913	9,516,513	10,247,092
BEE	2,461,268	2,287,629	2,250,510	4,133,514	2,900,238	4,885,852
BME	0	0	1,133,989	2,125,256	3,702,888	4,457,048
CBE	4,245,366	4,478,189	4,555,740	5,323,590	4,302,224	5,553,612
CEE	7,879,198	4,904,523	5,967,244	5,098,980	6,144,608	5,379,343
CS*	15,342,465	15,820,688	16,643,850	17,584,803	12,828,241	11,960,903
EAS	2,290,700	1,904,512	2,112,703	2,385,372	5,017,455	5,203,767
ECE	16,575,988	17,244,748	14,254,503	15,793,386	14,453,064	15,624,393
MSE	5,644,231	5,751,230	5,074,031	5,119,951	5,960,378	6,148,427
MAE	6,842,424	7,299,655	7,492,795	7,792,884	9,207,889	9,976,166
ORIE	1,467,924	1,146,479	1,119,730	1,595,818	2,534,565	1,947,725
TAM	2,089,805	2,606,648	2,065,474	1,708,674	2,041,413	2,005,838
<b>TOTAL</b>	<b>75,741,304</b>	<b>75,117,274</b>	<b>73,745,671</b>	<b>79,171,141</b>	<b>78,609,476</b>	<b>83,390,166</b>

\* Does not include CIS research expenditures.

## Research Expenditures by Department







Cornell University  
Office of the Vice Provost for Research

# RESEARCH EXPENDITURES

July 1, 2007 - June 30, 2008

**CORNELL UNIVERSITY**  
**RESEARCH EXPENDITURES**

**JULY 1, 2007 - JUNE 30, 2008**

**TABLE I**

	SPONSORED RESEARCH			APPROPRIATED RESEARCH			CORNELL	TOTAL RESEARCH	
	Federal Government	Non-Federal	Subtotal Sponsored	NY State	Federal Government	Subtotal Appropriated	Cornell Support ***	Total Research	Percent of Total
<b>ENDOWED UNITS (ITH)</b>									
Arts & Sciences *	\$62,066,953	\$10,213,692	\$72,280,645			\$0	\$18,955,123	\$91,235,768	13.7
Engineering	45,339,825	21,019,252	66,359,077			0	12,741,053	\$79,100,130	11.8
Research Centers ****	47,993,019	4,976,072	52,969,091			0	11,939,719	\$64,908,810	9.7
Other Colleges & Units **	644,560	1,113,771	1,758,331			0	429,455	\$2,187,786	0.3
<b>TOTAL ENDOWED</b>	<b>156,044,357</b>	<b>37,322,787</b>	<b>193,367,144</b>	<b>0</b>	<b>0</b>	<b>0</b>	<b>44,065,350</b>	<b>\$237,432,494</b>	<b>35.5</b>
<b>CONTRACT COLLEGE UNITS (ITH)</b>									
Agriculture & Life Sciences	46,248,882	29,721,319	75,970,201	37,623,625	7,366,186	44,989,811	30,790,694	\$151,750,706	22.7
Veterinary Medicine	25,010,490	6,502,988	31,513,478	10,606,725	902,801	11,509,526	6,819,908	\$49,842,912	7.5
Human Ecology	5,329,448	2,602,741	7,932,189	4,583,185	278,101	4,861,286	1,549,103	\$14,342,578	2.1
Nutritional Sciences	4,221,787	1,264,897	5,486,684	1,381,570	808,773	2,190,343	1,553,917	\$9,230,944	1.4
Industrial & Labor Relations	1,588,425	1,145,027	2,733,452	830,939		830,939	2,582,439	\$6,146,830	0.9
<b>TOTAL CONTRACT</b>	<b>82,399,032</b>	<b>41,236,972</b>	<b>123,636,004</b>	<b>55,026,044</b>	<b>9,355,861</b>	<b>64,381,905</b>	<b>43,296,061</b>	<b>\$231,313,970</b>	<b>34.6</b>
<b>TOTAL ITHACA</b>	<b>238,443,389</b>	<b>78,559,759</b>	<b>317,003,148</b>	<b>55,026,044</b>	<b>9,355,861</b>	<b>64,381,905</b>	<b>87,361,411</b>	<b>\$468,746,464</b>	<b>70.1</b>
<b>MEDICAL COLLEGE (NYC)</b>	<b>130,096,810</b>	<b>33,269,765</b>	<b>163,366,575</b>			<b>0</b>	<b>36,114,416</b>	<b>\$199,480,991</b>	<b>29.9</b>
<b>TOTAL RESEARCH EXPENDITURES</b>	<b>\$368,540,199</b>	<b>\$111,829,524</b>	<b>\$480,369,723</b>	<b>\$55,026,044</b>	<b>\$9,355,861</b>	<b>\$64,381,905</b>	<b>\$123,475,827</b>	<b>\$668,227,455</b>	<b>100.0</b>
<b>PERCENTAGE OF GRAND TOTAL</b>	<b>55.2</b>	<b>16.7</b>	<b>71.9</b>	<b>8.2</b>	<b>1.4</b>	<b>9.6</b>	<b>18.5</b>	<b>100.0</b>	

\* Includes Center for Radiophysics and Space Research (CRSR), Laboratory of Atomic and Solid State Physics (LASSP), and Laboratory for Elementary-Particle Physics (LEPP)

\*\* Includes Academic Programs, Architecture Art and Planning, Computing and Information Science, Hotel Administration, Johnson Graduate School of Management, Law, Provost

\*\*\* Consistent with NSF reporting guidelines, University support includes: institutional cost sharing, GRA tuition fellowships, University seed research grants, unrecovered facilities & administrative costs, and organized research allocation of NYS-funded employee benefits

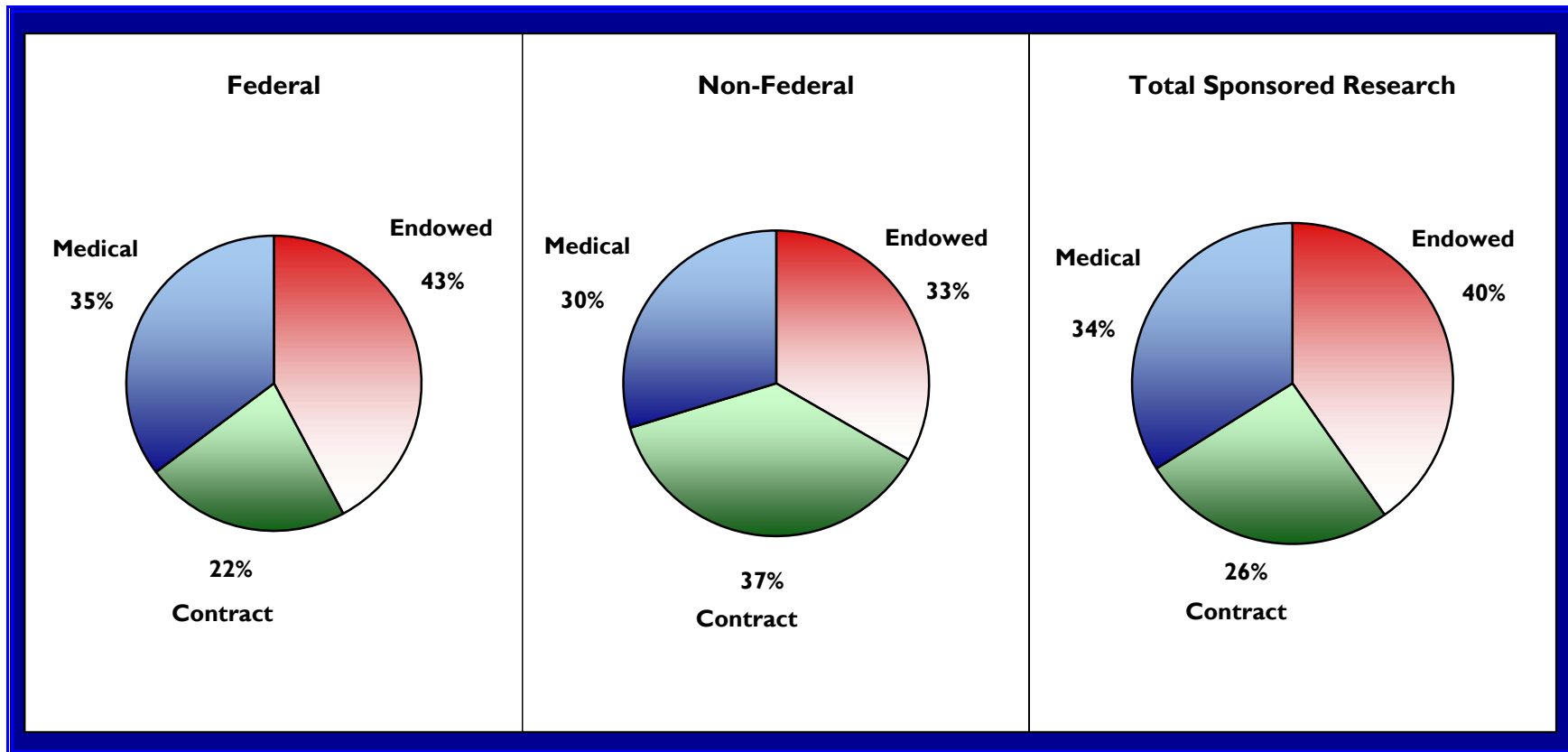
\*\*\*\* The research expenditures in the Research Centers were predominately, but certainly not exclusively, directed by faculty members with appointments in Engineering and Arts & Sciences

# CORNELL UNIVERSITY

## SPONSORED RESEARCH EXPENDITURES BY DIVISION

FISCAL YEAR 2008

CHART I

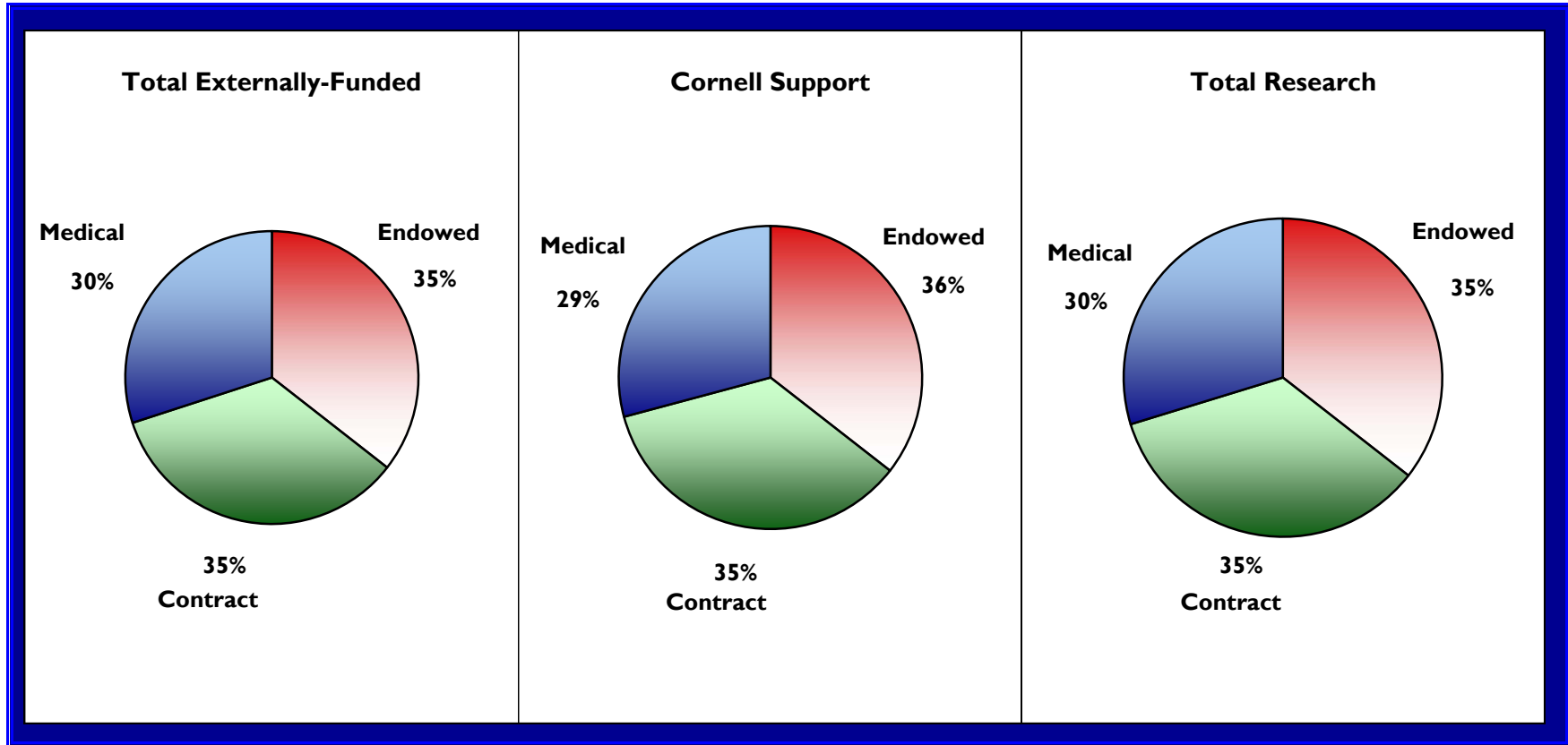


# CORNELL UNIVERSITY

## RESEARCH EXPENDITURES BY DIVISION

FISCAL YEAR 2008

CHART 2



**CORNELL UNIVERSITY**  
**RESEARCH EXPENDITURES**  
**COMPARISON WITH PRIOR YEAR**  
**FISCAL YEARS 2007 & 2008**

**TABLE 2**

	FEDERAL SPONSORED		%	NON-FEDERAL SPONSORED		%	APPROPRIATED		%
	FY 2007	FY 2008	Chg	FY 2007	FY 2008	Chg	FY 2007	FY 2008	Chg
<b>ENDOWED UNITS</b>	\$158,667,785	\$156,044,357	-1.7	\$32,811,445	\$37,322,787	13.7	\$0	\$0	
<b>CONTRACT COLLEGE UNITS</b>	92,653,058	82,399,032	-11.1	35,401,095	41,236,972	16.5	60,086,046	64,381,905	7.1
<b>MEDICAL COLLEGE</b>	131,594,832	130,096,810	-1.1	30,127,532	33,269,765	10.4	0	0	
<b>TOTAL EXPENDITURES</b>	\$382,915,675	\$368,540,199	-3.8	\$98,340,072	\$111,829,524	13.7	\$60,086,046	64,381,905	7.1

	TOTAL EXTERNALLY-FUNDED		%	CORNELL SUPPORT		%	TOTAL RESEARCH		%
	FY 2007	FY 2008	Chg	FY 2007	FY 2008	Chg	FY 2007	FY 2008	Chg
<b>ENDOWED UNITS</b>	\$191,479,230	\$193,367,144	1.0	\$37,166,710	\$44,065,350	18.6	\$228,645,940	\$237,432,494	3.8
<b>CONTRACT COLLEGE UNITS</b>	188,140,199	188,017,909	-0.1	44,731,921	43,296,061	-3.2	\$232,872,120	\$231,313,970	-0.7
<b>MEDICAL COLLEGE</b>	161,722,364	163,366,575	1.0	36,141,791	36,114,416	-0.1	\$197,864,155	\$199,480,991	0.8
<b>TOTAL EXPENDITURES</b>	\$541,341,793	\$544,751,628	0.6	\$118,040,422	\$123,475,827	4.6	\$659,382,215	\$668,227,455	1.3

# CORNELL UNIVERSITY

## SPONSORED RESEARCH EXPENDITURES - FEDERAL AGENCIES

JULY 1, 2007 - JUNE 30, 2008

TABLE 3

	DHHS	NSF	Dept of Agriculture	Dept of Defense	NASA ***	Dept of Energy	AID	All Others	Total Federal
<b>ENDOWED UNITS (ITH)</b>									
Arts & Sciences *	\$14,998,699	\$33,759,435	\$276,951	\$544,458	\$9,253,027	\$2,546,396		\$687,987	\$62,066,953
Research Centers	2,220,214	43,012,417	151,069	186,741	84,506	835,605		1,502,467	\$47,993,019
Engineering	4,682,417	22,370,746	156,415	12,558,887	960,683	3,615,921		994,757	\$45,339,826
Other Colleges & Units **	127,804	506,273						10,482	\$644,559
<b>TOTAL ENDOWED</b>	<b>22,029,134</b>	<b>99,648,871</b>	<b>584,435</b>	<b>13,290,086</b>	<b>10,298,216</b>	<b>6,997,922</b>	<b>0</b>	<b>3,195,693</b>	<b>\$156,044,357</b>
<b>CONTRACT COLLEGE UNITS (ITH)</b>									
Agriculture & Life Sciences	11,324,570	14,686,656	13,605,191	562,633	300,599	197,383	2,601,000	2,970,850	\$46,248,882
Veterinary Medicine	22,503,352	812,088	1,004,281	23,024				667,746	\$25,010,491
Human Ecology	4,475,293	551,845						302,310	\$5,329,448
Nutritional Sciences	2,949,355		1,033,364				220,829	18,238	\$4,221,786
Industrial & Labor Relations	264,177	2,896						1,321,350	\$1,588,423
<b>TOTAL CONTRACT</b>	<b>41,516,747</b>	<b>16,053,485</b>	<b>15,642,836</b>	<b>585,657</b>	<b>300,599</b>	<b>197,383</b>	<b>2,821,829</b>	<b>5,280,494</b>	<b>\$82,399,030</b>
<b>TOTAL ITHACA</b>	<b>63,545,881</b>	<b>115,702,356</b>	<b>16,227,271</b>	<b>13,875,743</b>	<b>10,598,815</b>	<b>7,195,305</b>	<b>2,821,829</b>	<b>8,476,187</b>	<b>\$238,443,387</b>
<b>MEDICAL COLLEGE (NYC)</b>	<b>127,246,656</b>	<b>297,411</b>		<b>2,552,743</b>					<b>\$130,096,810</b>
<b>TOTAL FEDERAL EXPENDITURES</b>	<b>\$190,792,537</b>	<b>\$115,999,767</b>	<b>\$16,227,271</b>	<b>\$16,428,486</b>	<b>\$10,598,815</b>	<b>\$7,195,305</b>	<b>\$2,821,829</b>	<b>\$8,476,187</b>	<b>\$368,540,197</b>
<b>PERCENTAGE OF GRAND TOTAL</b>	<b>28.6</b>	<b>17.4</b>	<b>2.4</b>	<b>2.5</b>	<b>1.6</b>	<b>1.1</b>	<b>0.4</b>	<b>1.3</b>	<b>55.2</b>

\* Includes Center for Radiophysics and Space Research (CRSR), Laboratory of Atomic and Solid State Physics (LASSP), and Laboratory for Elementary-Particle Physics (LEPP)

\*\* Includes Academic Programs, Architecture Art and Planning, Computing and Information Science, Hotel Administration, Johnson Graduate School of Management, Law, Provost

\*\*\* NASA includes JPL funds under subcontract

# CORNELL UNIVERSITY

## SPONSORED RESEARCH EXPENDITURES - NON-FEDERAL SOURCES

JULY 1, 2007 - JUNE 30, 2008

TABLE 4

	State & Local Governments	Corporations & Trade Assoc.	Foundations	Non-Profit Organizations ***	All Other Non-Federal	Total Non-Federal
<b>ENDOWED UNITS (ITH)</b>						
Engineering	\$2,744,636	\$6,555,198	\$811,963	\$10,230,823	\$676,632	\$21,019,252
Arts & Sciences *	128,239	1,013,614	965,064	8,056,645	50,130	\$10,213,692
Research Centers	2,816,616	221,847	2,026	1,704,679	230,904	\$4,976,072
Other Colleges & Units **	521,775	388,522	20,198	145,145	38,130	\$1,113,770
<b>TOTAL ENDOWED</b>	<b>6,211,266</b>	<b>8,179,181</b>	<b>1,799,251</b>	<b>20,137,292</b>	<b>995,796</b>	<b>\$37,322,786</b>
<b>CONTRACT COLLEGE UNITS (ITH)</b>						
Agriculture & Life Sciences	9,074,494	4,762,811	2,610,021	13,010,175	263,818	\$29,721,319
Veterinary Medicine	1,411,391	1,512,617	1,077,428	2,452,331	49,221	\$6,502,988
Human Ecology	459,499	329,700	502,088	1,260,543	50,911	\$2,602,741
Nutritional Sciences		448,513	12,480	803,903		\$1,264,896
Industrial & Labor Relations	33,507	178,247	520,103	255,072	158,097	\$1,145,026
<b>TOTAL CONTRACT</b>	<b>10,978,891</b>	<b>7,231,888</b>	<b>4,722,120</b>	<b>17,782,024</b>	<b>522,047</b>	<b>\$41,236,970</b>
<b>TOTAL ITHACA</b>	<b>17,190,157</b>	<b>15,411,069</b>	<b>6,521,371</b>	<b>37,919,316</b>	<b>1,517,843</b>	<b>\$78,559,756</b>
<b>MEDICAL COLLEGE (NYC)</b>	<b>3,258,942</b>	<b>10,536,098</b>	<b>19,474,724</b>			<b>\$33,269,764</b>
<b>TOTAL NON-FEDERAL EXPENDITURES</b>	<b>\$20,449,099</b>	<b>\$25,947,167</b>	<b>\$25,996,095</b>	<b>\$37,919,316</b>	<b>\$1,517,843</b>	<b>\$111,829,520</b>
<b>PERCENTAGE OF GRAND TOTAL</b>	<b>3.1</b>	<b>3.9</b>	<b>3.9</b>	<b>5.7</b>	<b>0.2</b>	<b>16.7</b>

\* Includes Center for Radiophysics and Space Research (CRSR), Laboratory of Atomic and Solid State Physics (LASSP), and Laboratory for Elementary-Particle Physics (LEPP)

\*\* Includes Academic Programs, Architecture Art and Planning, Computing and Information Science, Hotel Administration, Johnson Graduate School of Management, Law, Provost

\*\*\* Includes sub-awards of federal funds from other universities, national labs, non-government organizations, etc.

# CORNELL UNIVERSITY

## SPONSORED RESEARCH EXPENDITURES - FEDERAL AGENCIES

### COMPARISON WITH PRIOR YEAR

### FISCAL YEARS 2007 & 2008

TABLE 5

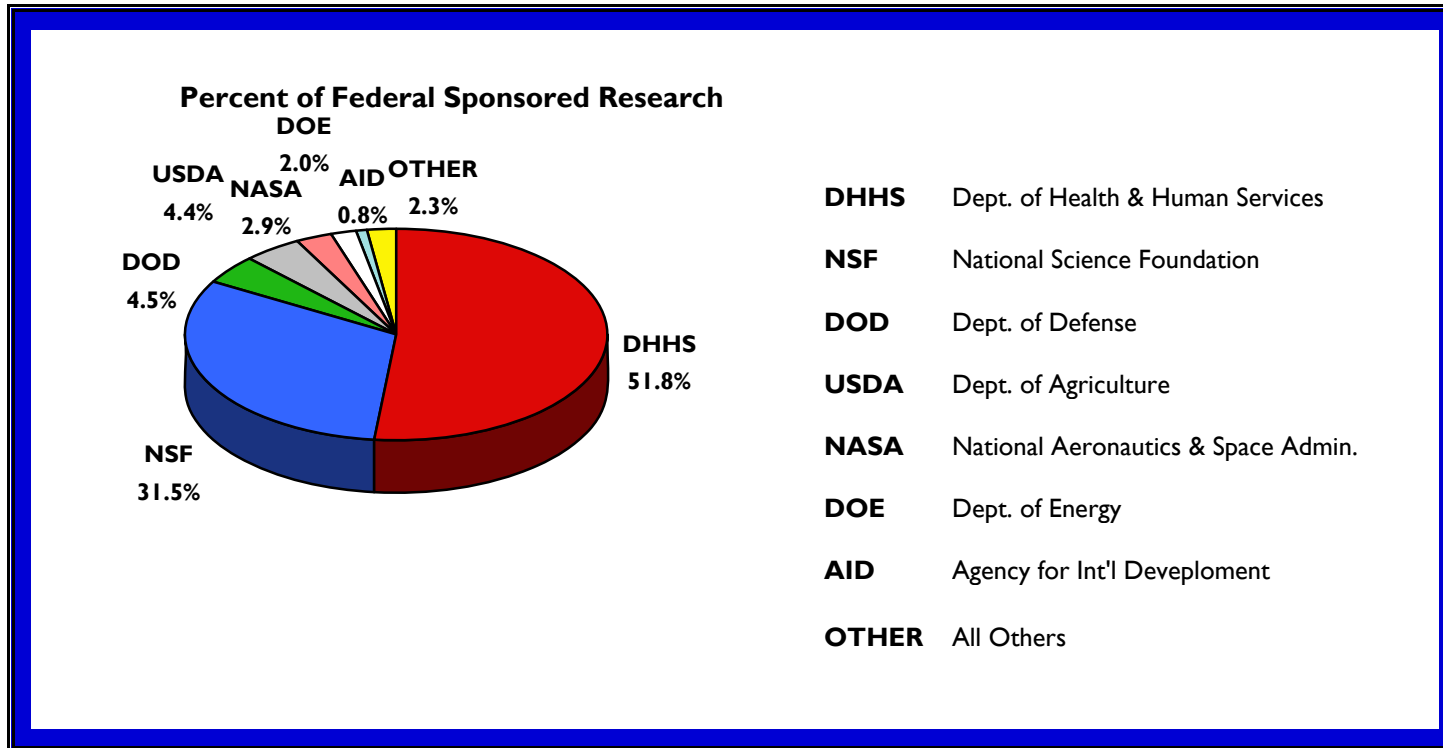
Federal Agency	FY 2007	Percent Fed Spons	FY 2008	Percent Fed Spons	% Change in Amount
Department of Health & Human Services	\$195,854,859	51.1	\$190,792,537	51.8	-2.6
National Science Foundation	121,579,207	31.8	115,999,767	31.5	-4.6
Department of Defense	16,130,344	4.2	16,428,486	4.5	1.8
Department of Agriculture	19,447,321	5.1	16,227,271	4.4	-16.6
NASA *	11,386,271	3.0	10,598,815	2.9	-6.9
Department of Energy	6,460,269	1.7	7,195,305	2.0	11.4
Agency for Int'l Development	3,698,999	1.0	2,821,829	0.8	-23.7
All Others	8,358,408	2.2	8,476,187	2.3	1.4
<b>TOTAL FEDERAL SPONSORED RESEARCH</b>	<b>\$382,915,678</b>	<b>100.0</b>	<b>\$368,540,197</b>	<b>100.0</b>	<b>-3.8</b>

\* NASA includes JPL funds under subcontract



**CORNELL UNIVERSITY**  
**SPONSORED RESEARCH EXPENDITURES**  
**BY FEDERAL AGENCY**  
**FISCAL YEAR 2008**

**CHART 3**



# CORNELL UNIVERSITY

## RESEARCH EXPENDITURES - NON-FEDERAL SPONSORED, APPROPRIATED RESEARCH & CORNELL SUPPORT

### COMPARISON WITH PRIOR YEAR

FISCAL YEARS 2007 & 2008

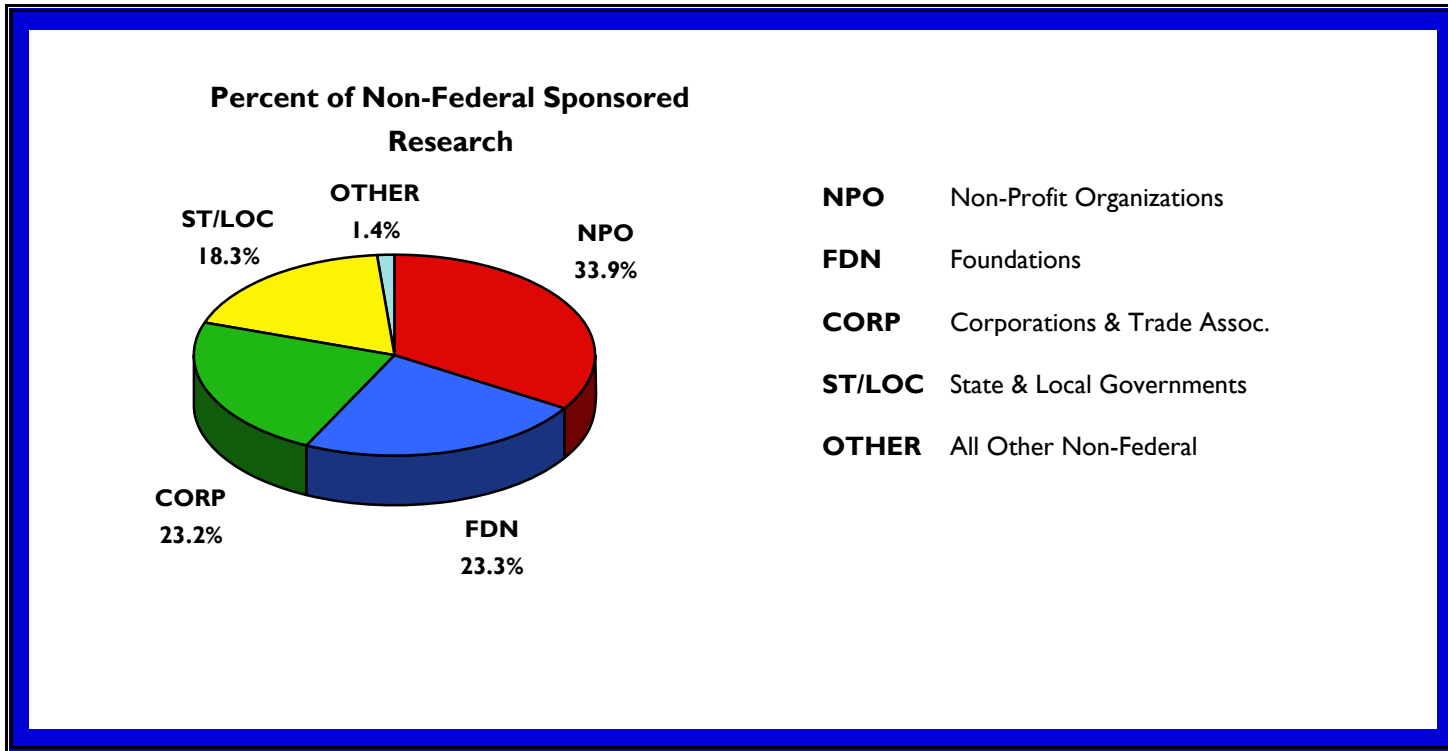
TABLE 6

Funding Source	FY 2007	Percent To Total	FY 2008	Percent To Total	% Change in Amount
<b>NON-FEDERAL SPONSORED</b>					
Non-Profit Organizations *	\$35,584,782	12.9	\$37,919,316	12.7	6.6
Foundations	20,071,318	7.3	25,996,095	8.7	29.5
Corporations & Trade Associations	23,655,363	8.6	25,947,167	8.7	9.7
State & Local Governments	17,764,370	6.4	20,449,099	6.8	15.1
All Other Federal	1,264,238	0.5	1,517,843	0.5	20.1
<b>APPROPRIATED RESEARCH</b>					
NY State Appropriations	54,215,579	19.6	55,026,044	18.4	1.5
Federal Appropriations	5,870,469	2.1	9,355,861	3.1	59.4
<b>CORNELL SUPPORT</b>	\$118,040,422	42.7	\$123,475,827	41.2	4.6
<b>TOTAL NON-FEDERAL SPONSORED, APPROPRIATED RESEARCH &amp; CORNELL SUPPORT</b>	<b>\$276,466,541</b>	<b>100.0</b>	<b>\$299,687,252</b>	<b>100.0</b>	<b>8.4</b>

\* Includes sub-awards of federal funds from other universities, national labs, non-government organizations, etc.

**CORNELL UNIVERSITY**  
**SPONSORED RESEARCH EXPENDITURES**  
**BY NON-FEDERAL SOURCES**  
**FISCAL YEAR 2008**

**CHART 4**



**CORNELL UNIVERSITY**  
**TOTAL RESEARCH EXPENDITURES - BY DISCIPLINE**  
**FISCAL YEARS 2007 & 2008**

**TABLE 7**

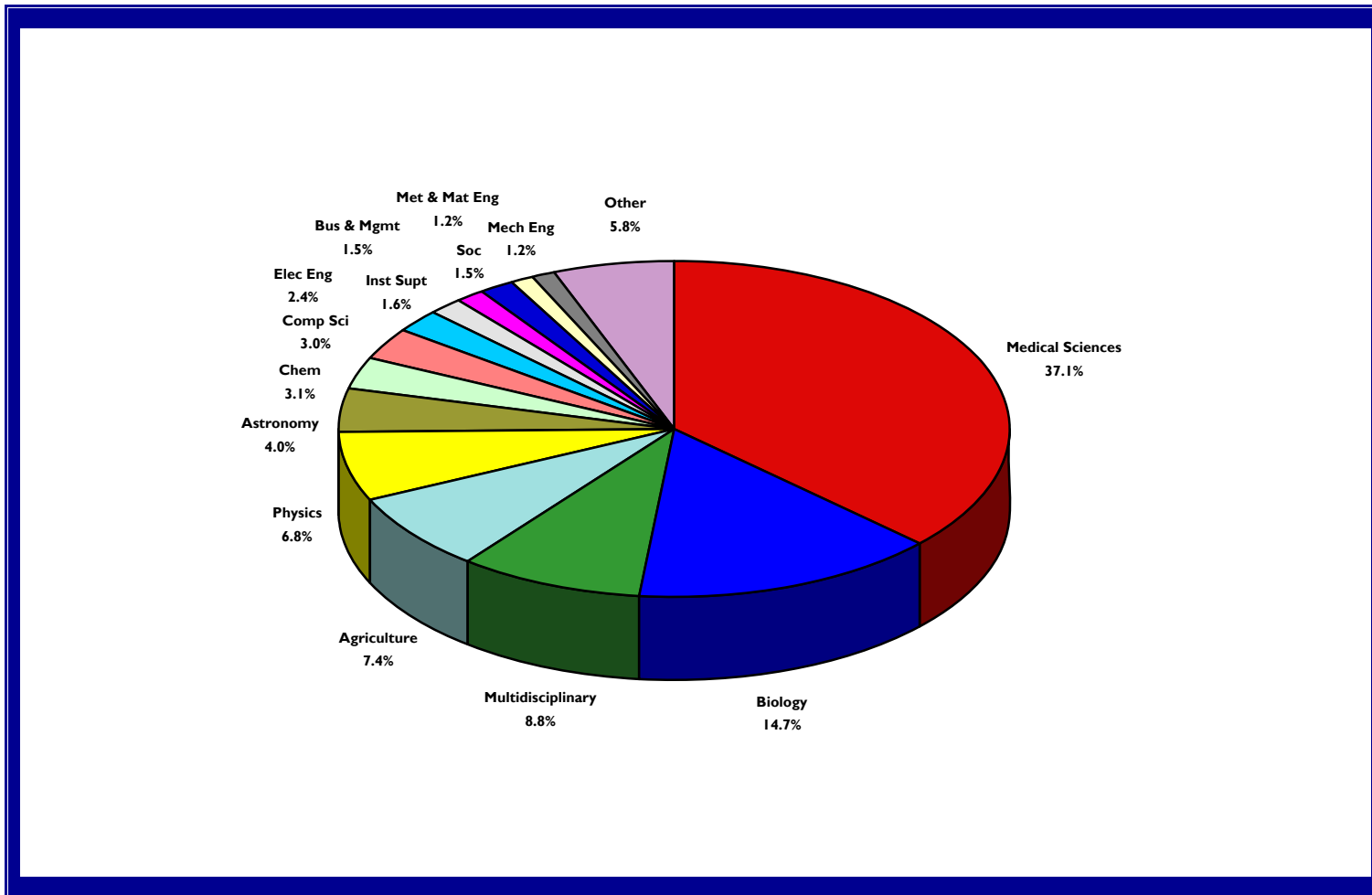
Discipline *	FY 2007	Percent of Total	FY 2008	Percent of Total	% Change in Amount
Medical Sciences	\$245,094,210	37.2	\$247,622,708	37.1	1.0
Biology	97,518,646	14.8	98,354,092	14.7	0.9
Multidisciplinary	57,332,948	8.7	58,542,052	8.8	2.1
Agriculture	50,602,206	7.7	49,543,549	7.4	-2.1
Physics	44,183,017	6.7	45,729,724	6.8	3.5
Astronomy	28,457,346	4.3	26,892,230	4.0	-5.5
Chemistry	18,380,376	2.8	20,525,753	3.1	11.7
Computer Sciences	23,304,490	3.5	19,935,131	3.0	-14.5
Electrical Engineering	14,207,766	2.2	15,975,332	2.4	12.4
Institutional & College Research Support **	9,158,653	1.4	10,723,724	1.6	17.1
Business & Management	9,925,396	1.5	9,985,119	1.5	0.6
Sociology	10,904,822	1.7	9,917,655	1.5	-9.1
Metallurgical and Materials Engineering	6,161,009	0.9	7,835,227	1.2	27.2
Mechanical Engineering	7,517,553	1.1	7,757,739	1.2	3.2
Civil Engineering	6,923,439	1.0	6,911,836	1.0	-0.2
Earth Sciences	5,823,300	0.9	6,157,707	0.9	5.7
Economics	6,028,669	0.9	5,540,388	0.8	-8.1
Mathematical Sciences	4,995,414	0.8	5,250,210	0.8	5.1
Chemical Engineering	5,121,793	0.8	5,083,519	0.8	-0.7
Psychology	4,277,527	0.6	4,243,146	0.6	-0.8
Bioengineering-Biomedical Engineering	1,251,818	0.2	2,755,131	0.4	120.1
Communication, Journalism, and Library Sciences	891,202	0.1	1,300,450	0.2	45.9
Humanities	595,115	0.1	916,058	0.1	53.9
Political Sciences	262,652	0.0	359,326	0.1	36.8
Oceanography	214,493	0.0	270,416	0.0	26.1
Law	245,130	0.0	90,286	0.0	-63.2
Visual and Performing Arts	3,229	0.0	8,943	0.0	177.0
<b>TOTAL RESEARCH EXPENDITURES</b>	<b>\$659,382,219</b>	<b>100.0</b>	<b>\$668,227,451</b>	<b>100.0</b>	<b>1.3</b>

\* Department discipline code mapping available at <http://www.research.cornell.edu/vpr/ResExp/ResExpDisciplines2008.xls>

\*\* Expenses incurred at the administrative unit level in support of research

**CORNELL UNIVERSITY**  
**TOTAL RESEARCH EXPENDITURES BY DISCIPLINE**  
**FISCAL YEAR 2008**

**CHART 5**

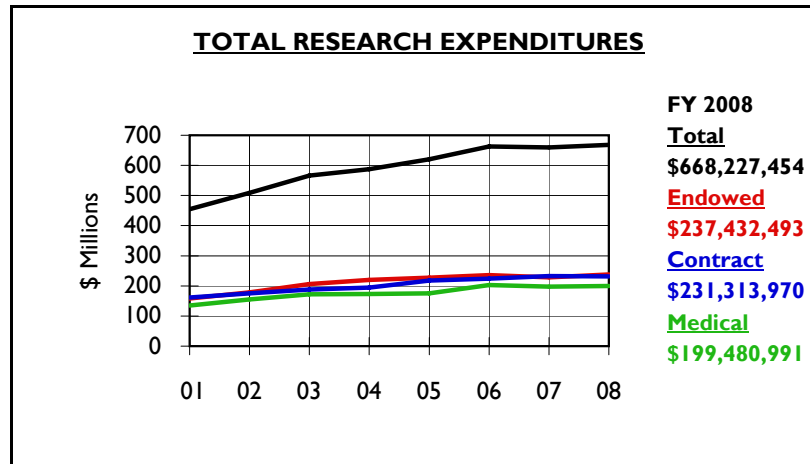
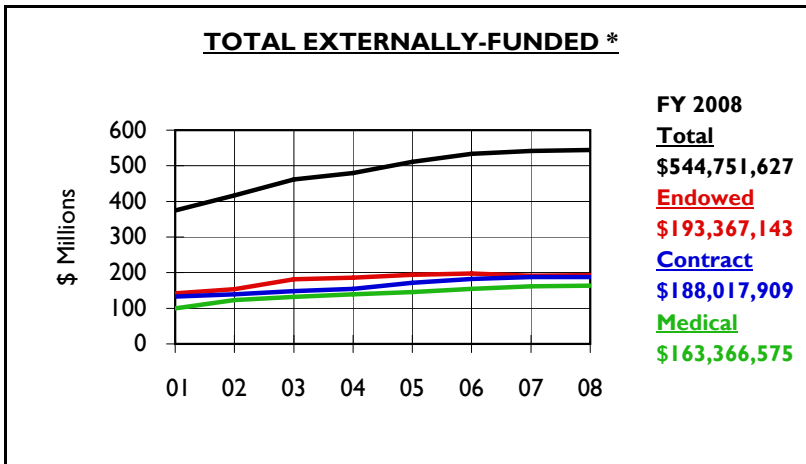
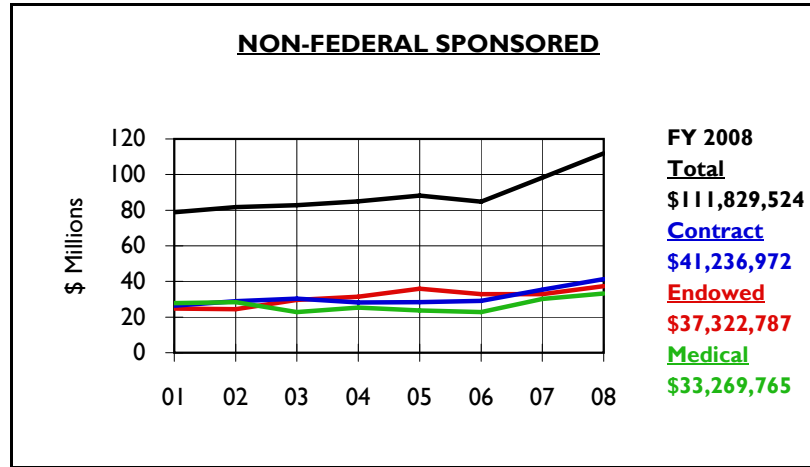
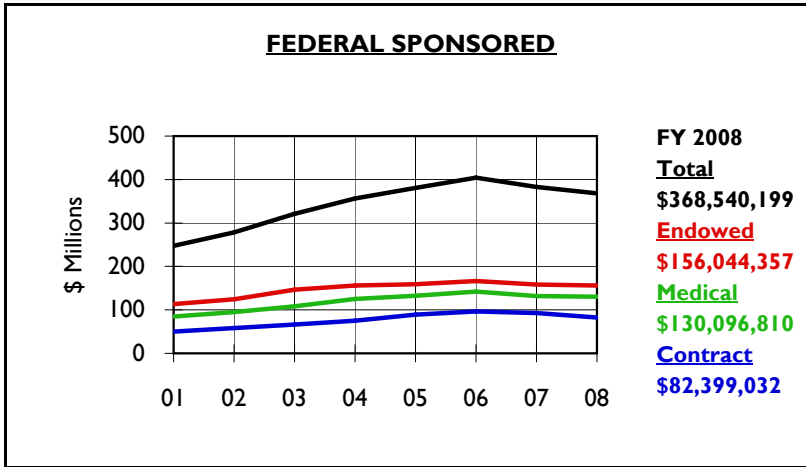


# CORNELL UNIVERSITY

## TRENDS IN RESEARCH EXPENDITURES

FISCAL YEARS 2001 TO 2008

CHART 6



\* Includes federal, state, corporate, foundation, non-profit sponsored research awards, and federal & state appropriations

# CORNELL UNIVERSITY

## TRENDS IN RESEARCH EXPENDITURES

### FISCAL YEARS 2001 TO 2008

CHART 7

