

Vertical Axis Wind Turbine (Part 1) - Mesh

Author: Julio Sampaio Gabriel de Pieri, Cornell University

[Problem Specification](#)

[1. Pre-Analysis & Start-Up](#)

[2. Geometry](#)

[3. Mesh](#)

[4. Physics Setup](#)

[5. Numerical Solution](#)

[6. Numerical Results](#)

[7. Verification & Validation](#)

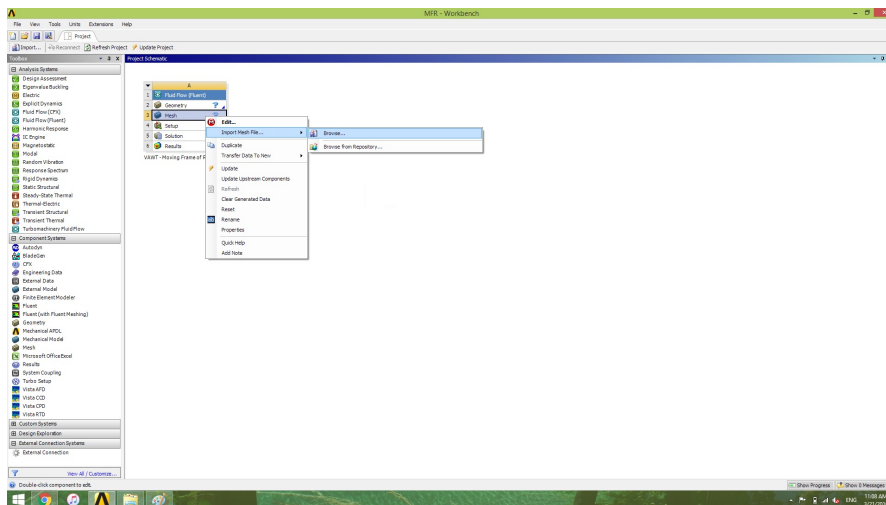
[Exercises](#)

[Comments](#)

Mesh

The mesh file can be downloaded [here](#).

To import the mesh file into your project, Right-Click *Mesh* on the *Project* and go to *Import Mesh File ...* > *Browse...* . Then locate the file you just download.



After the green check mark has appeared, it's time to begin the actual FLUENT part!

[Go to Step 4: Physics Setup](#)

[Go to all FLUENT Learning Modules](#)